




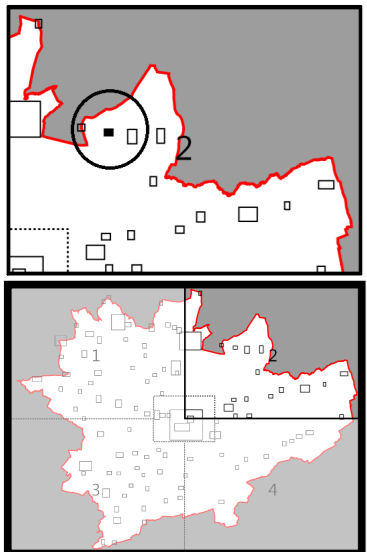


Click on the layers listed in the Key to switch on or off

Click here to switch all layers on  
 Click here to switch all layers off

- Key**
-  Ryedale Local Plan Boundary
  -  Area Outside of Ryedale Local Plan
  -  Development Limits (SP1)
  -  Scheduled Monument (SP12)
  -  Area of High Landscape Value (SP13)



# Wilton

## Ryedale Plan Policies Map



Scale: 1:2500 @A3

© Crown Copyright and database right 2018.  
 Ordnance Survey 100019406

