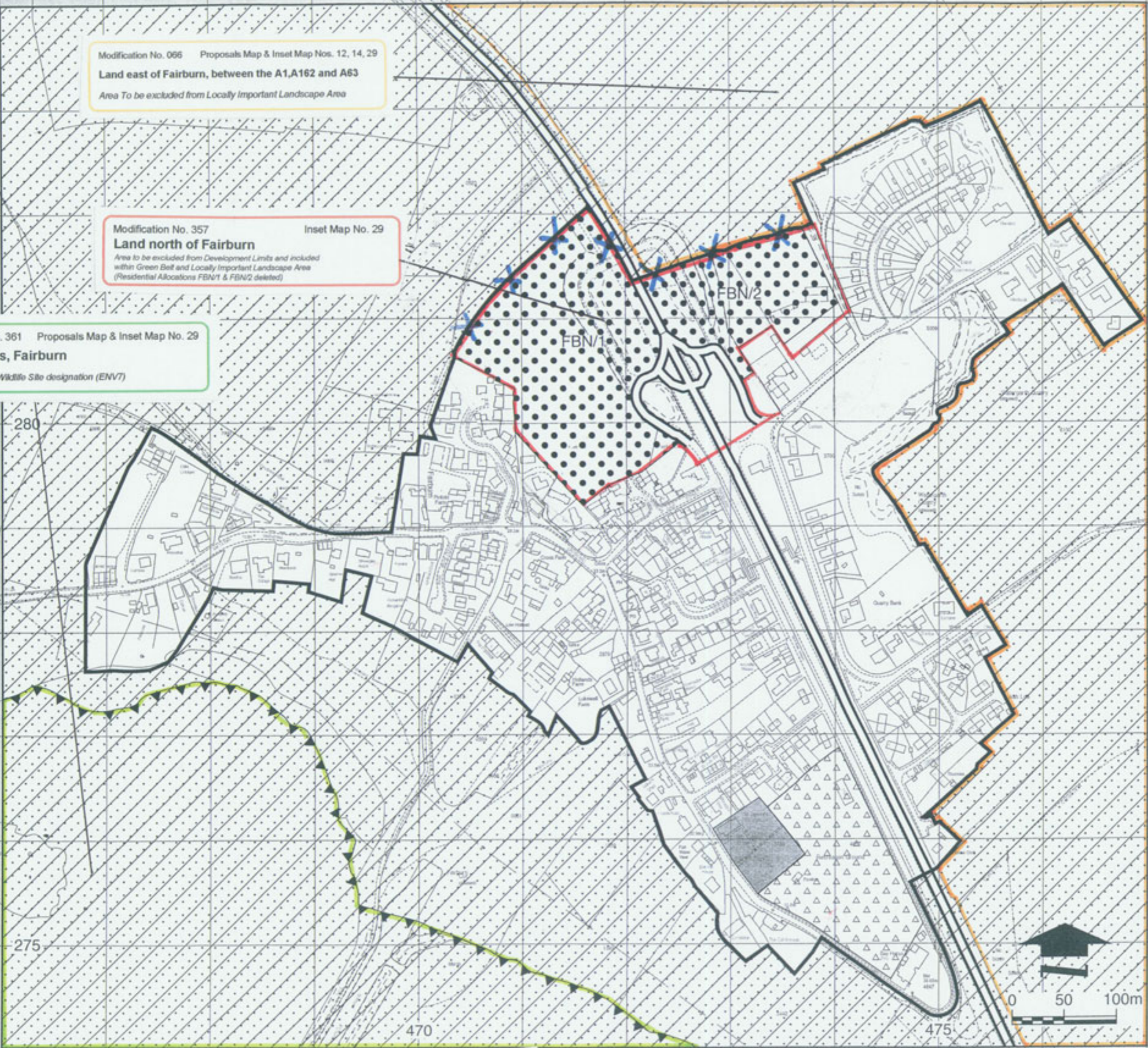


Modification No. 066 Proposals Map & Inset Map Nos. 12, 14, 29
Land east of Fairburn, between the A1,A162 and A63
Area To be excluded from Locally Important Landscape Area

Modification No. 357 Inset Map No. 29
Land north of Fairburn
Area to be excluded from Development Limits and included within Green Belt and Locally Important Landscape Area
(Residential Allocations FBN/1 & FBN/2 deleted)

Modification Nos. 361 Proposals Map & Inset Map No. 29
Fairburn Ings, Fairburn
New International Wildlife Site designation (ENVT)



Reproduced from the Ordnance Survey mapping with the permission of the Controller of Her Majesty's Stationery Office © Crown copyright. Unauthorised reproduction infringes Crown copyright and may lead to prosecution or civil proceedings.
Selby District Council Licence No. 100016656

FAIRBURN