

Population Estimates



Performance, Research
& Intelligence Team
Chief Executive's Group

2020

MID-2008 PARISH POPULATION ESTIMATES

CONTENTS

Introduction

A Profile of North Yorkshire 2001 & 2008

Table 1	Population Change in Northern England 2001-2008
Table 2	Population Change in North Yorkshire 2001-2008
Table 3	Population Change for Special Areas 2001-2008
Table 4	North Yorkshire Age Structures 2001 & 2008
Figure 1	Map of North Yorkshire Population Change 2001-2008
Figure 2	Bar Chart of North Yorkshire Population Change 2001-2008
Figure 3	Bar Chart of Mid-2008 Population Estimates, by Gender & District
Figure 4	Map of Mid-2008 Parish-Based Population Densities for North Yorkshire
Figure 5	Map indicating Population Change in North Yorkshire by Parish 2001-2008
Table 5	Population Change in N Yorkshire Market Towns & Large Settlements 2001-2008
Figure 6	Mid-2008 Population Estimates for N Yorkshire Market Towns & Large Settlements

Parish Population Estimates by District 2001 & 2008

Craven
Hambleton
Harrogate
Richmondshire
Ryedale
Scarborough
Selby

MID-2008 PARISH POPULATION ESTIMATES

Introduction

This booklet contains estimates of the resident population for each Parish in North Yorkshire as at 30th June 2008. It is a revised version of the booklet published in November 2009, to reflect the Office for National Statistics Mid Year Population Estimates which were revised in 2010. A companion booklet that provides an estimate of the resident population of each Ward in North Yorkshire is also available.

The estimates are the result of a statistical analysis based on changes in the number of registered electors. The effect of changes in the size of the dwelling stock, through building, demolition or conversion is not considered separately but are taken to be reflected in changes in the number of electors.

The methodology used to calculate the population figures has been revised for 2008, so the figures contained in this booklet are not directly comparable with those of previous years. In all cases, the sum of the individual parish population figures within each District are constrained to the Registrar General's Mid-Year Estimates.

Performance, Research & Intelligence Team
Chief Executive's Group
North Yorkshire County Council

October 2010

A Profile of North Yorkshire 2001 & 2008

TABLE 1
POPULATION CHANGE IN NORTHERN ENGLAND 2001 - 2008

COUNTY/METROPOLITAN/UNITARY AUTHORITY or HIGHER AREA	Area Hectares	Population		Change	
		2001	2008	Number	%
Cumbria	676,715	487,800	495,900	8,100	1.7
Darlington	19,748	97,900	100,100	2,200	2.2
Durham	222,605	493,700	505,000	11,300	2.3
East Riding of Yorkshire	240,763	314,900	336,100	21,200	6.7
Hartlepool	9,386	90,200	90,800	600	0.7
Kingston Upon Hull	7,145	249,900	261,100	11,200	4.5
Lancashire	290,296	1,136,500	1,165,100	28,600	2.5
Middlesbrough	5,387	141,200	140,100	-1,100	-0.8
North East Lincolnshire	19,185	158,000	157,200	-800	-0.5
North Lincolnshire	84,631	153,000	160,500	7,500	4.9
North Yorkshire	803,761	570,100	593,500	23,400	4.1
Northumberland	501,301	307,400	310,900	3,500	1.1
Redcar & Cleveland	24,488	139,200	137,800	-1,400	-1.0
South Yorkshire	155,151	1,266,500	1,307,200	40,700	3.2
Stockton-on-Tees	20,390	183,800	189,800	6,000	3.3
Tyne & Wear	54,005	1,086,800	1,096,100	9,300	0.9
West Yorkshire	202,927	2,083,100	2,207,000	123,900	5.9
York	27,194	181,300	194,900	13,600	7.5
Yorkshire & the Humber	1,540,757	4,976,600	5,217,500	240,900	4.8
England & Wales	15,101,270	52,360,000	54,454,700	2,094,700	4.0

TABLE 2
POPULATION CHANGE IN NORTH YORKSHIRE 2001 - 2008

DISTRICT	Area Hectares	Population		Change	
		2001	2008	Number	%
Craven	117,739	53,700	55,700	2,000	3.7
Hambleton	131,117	84,200	86,900	2,700	3.2
Harrogate	130,794	151,500	156,100	4,600	3.0
Richmondshire	131,867	47,100	51,400	4,300	9.1
Ryedale	150,659	50,900	53,300	2,400	4.7
Scarborough	81,654	106,200	108,500	2,300	2.2
Selby	59,931	76,600	81,600	5,000	6.5
North Yorkshire	803,761	570,100	593,500	23,400	4.1

TABLE 3
POPULATION CHANGE IN THE NATIONAL PARKS 2001 - 2008

AREA	Area Hectares	Population		Change	
		2001	2008 *	Number	%
North York Moors National Park	143,600	24,430	24,550	120	0.5
Inside North Yorkshire	137,500	22,000	22,090	90	0.4
Outside North Yorkshire	6,100	2,430	2,460	30	1.2
Yorkshire Dales National Park	176,869	19,500	20,140	640	3.3
Inside North Yorkshire	155,968	15,910	16,580	670	4.2
Outside North Yorkshire	20,901	3,580	3,570	-10	-0.3

Notes

1. Figures are rounded independently and may not sum.
2. Population figures are sourced from the Registrar General's Revised Mid-Year Estimates for 2001 & Mid-Year Estimates for 2008 (Revised 2010); ONS; Crown Copyright, except data contained in Table 3 which are constrained to the Registrar Generals figures and sourced from the respective authorities.
3. Hectare measurements were produced by the Ordnance Survey at the time of the 2001 Census. The figures are sourced from the 2001 Census Key Statistics; ONS; Crown Copyright.
4. (*) NB. As 2008 mid-year parish population estimates are unavailable for the parts of the Yorkshire Dales National Park outside North Yorkshire, 2003 estimates have been used in these calculations.
5. Compilation & Analysis: Performance, Research and Intelligence, Chief Executive's Group, NYCC
6. Filename: L:\priet\stats team\population estimates\popest08\pc0108.xls

TABLE 4
NORTH YORKSHIRE AGE STRUCTURES 2001 & 2008

2001			
Age Group	Male	Female	Total
Under 1	2,900	2,600	5,500
1 - 4	12,400	11,900	24,300
5 - 9	17,600	16,800	34,400
10 - 14	19,400	18,700	38,000
15 - 19	18,600	15,700	34,300
20 - 24	13,200	11,800	25,000
25 - 29	14,800	14,700	29,500
30 - 34	18,400	19,600	38,000
35 - 39	21,000	22,400	43,400
40 - 44	20,900	21,100	41,900
45 - 49	18,700	19,400	38,000
50 - 54	21,900	22,200	44,100
55 - 59	18,700	18,900	37,600
60 - 64	15,700	16,400	32,100
65 - 69	13,700	14,700	28,400
70 - 74	11,800	13,800	25,600
75 - 79	9,100	12,300	21,400
80 - 84	5,400	9,300	14,700
85 +	3,800	9,900	13,700
Total	277,900	292,200	570,100

2008			
Age Group	Male	Female	Total
Under 1	3,100	2,900	6,100
1 - 4	12,500	11,800	24,300
5 - 9	15,800	15,100	30,900
10 - 14	18,400	17,600	36,000
15 - 19	21,400	18,300	39,600
20 - 24	16,600	12,900	29,500
25 - 29	15,300	12,700	28,000
30 - 34	13,700	14,600	28,300
35 - 39	18,600	20,500	39,100
40 - 44	21,900	23,800	45,700
45 - 49	22,200	23,200	45,400
50 - 54	20,000	20,700	40,800
55 - 59	19,800	20,900	40,600
60 - 64	21,500	22,000	43,500
65 - 69	15,800	16,700	32,600
70 - 74	13,200	14,700	27,900
75 - 79	10,100	12,300	22,300
80 - 84	6,800	10,100	16,800
85 +	5,000	10,900	15,900
Total	291,800	301,700	593,500

Percentage Change 2001 - 2008			
Age Group	Male	Female	Total
Under 1	8.3	12.6	10.3
1 - 4	0.6	-0.7	0.0
5 - 9	-10.2	-10.2	-10.2
10 - 14	-5.1	-5.5	-5.3
15 - 19	15.0	16.3	15.6
20 - 24	25.6	10.0	18.2
25 - 29	3.4	-13.8	-5.2
30 - 34	-25.3	-25.8	-25.5
35 - 39	-11.2	-8.5	-9.8
40 - 44	5.1	13.0	9.1
45 - 49	18.9	20.0	19.5
50 - 54	-8.5	-6.6	-7.5
55 - 59	5.6	10.3	8.0
60 - 64	37.0	33.7	35.3
65 - 69	15.5	13.8	14.6
70 - 74	12.2	6.3	9.0
75 - 79	10.4	0.0	4.5
80 - 84	24.2	8.6	14.3
85 +	32.1	9.9	16.1
Total	5.0	3.3	4.1

Notes

1. Figures are rounded independently and may not sum.
2. Source: Registrar General's Revised Mid-Year Estimates for 2001 & Mid-Year Estimates for 2008 (Revised 2010); ONS; Crown Copyright
3. Compilation & Analysis: Performance, Research and Intelligence, Chief Executive's Group, NYCC
4. Filename: L:\prits\stats team\population estimates\popest08\as0108.xls

NORTH YORKSHIRE POPULATION CHANGE 2001-2008

FIGURE 1

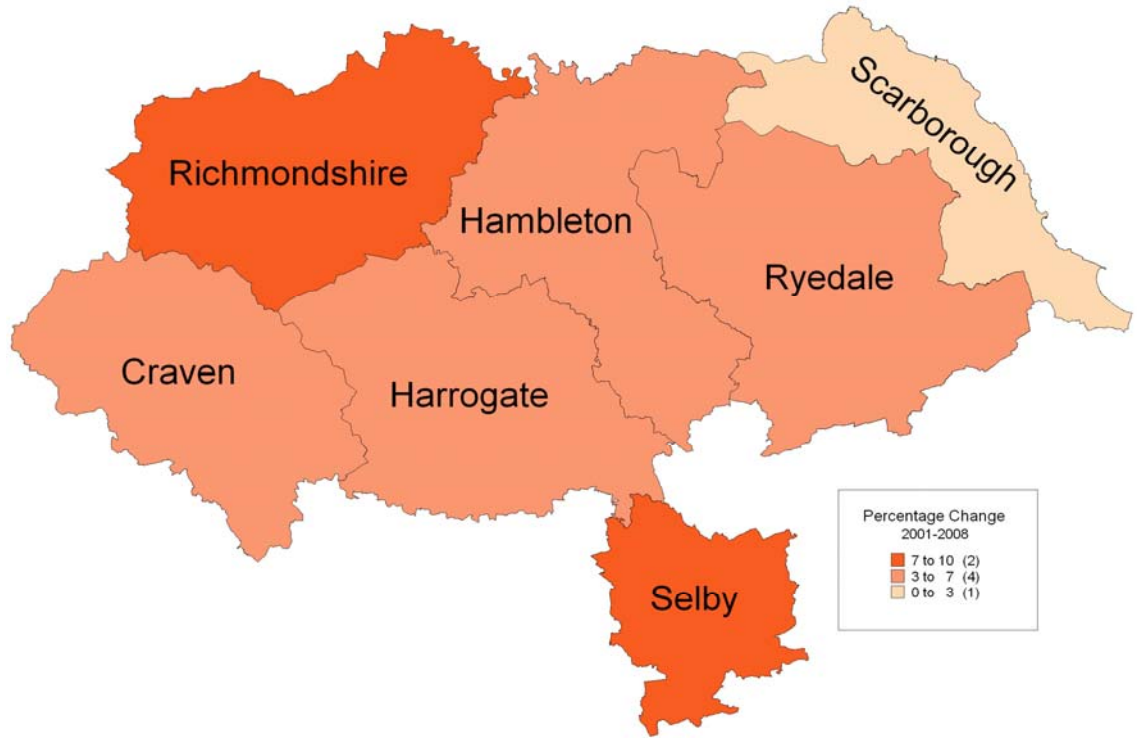
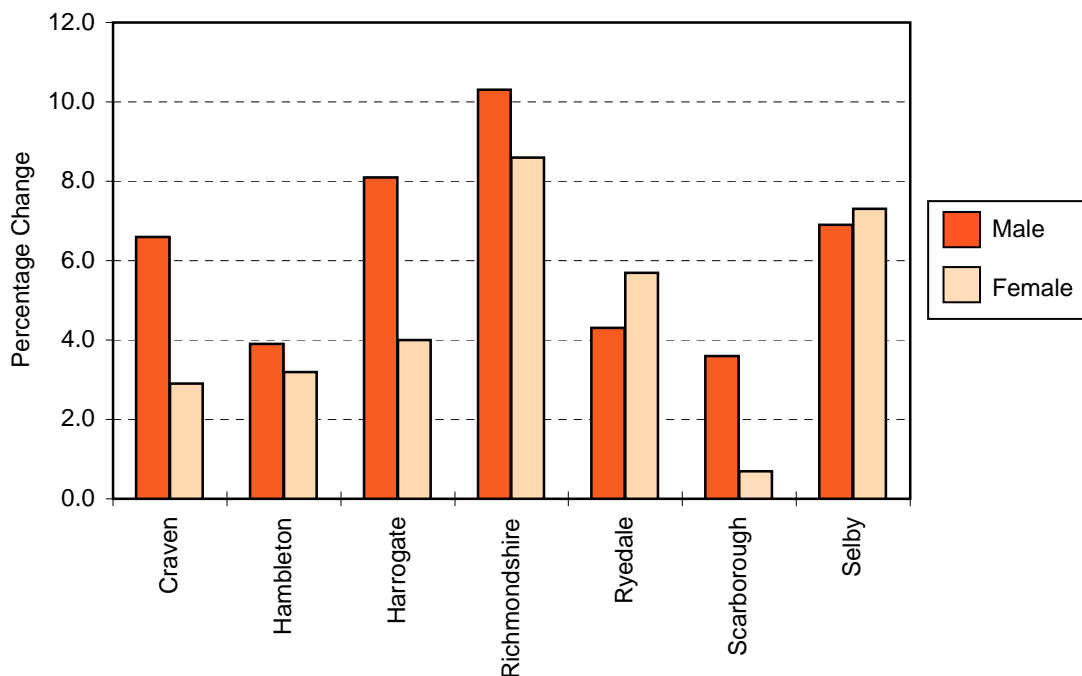


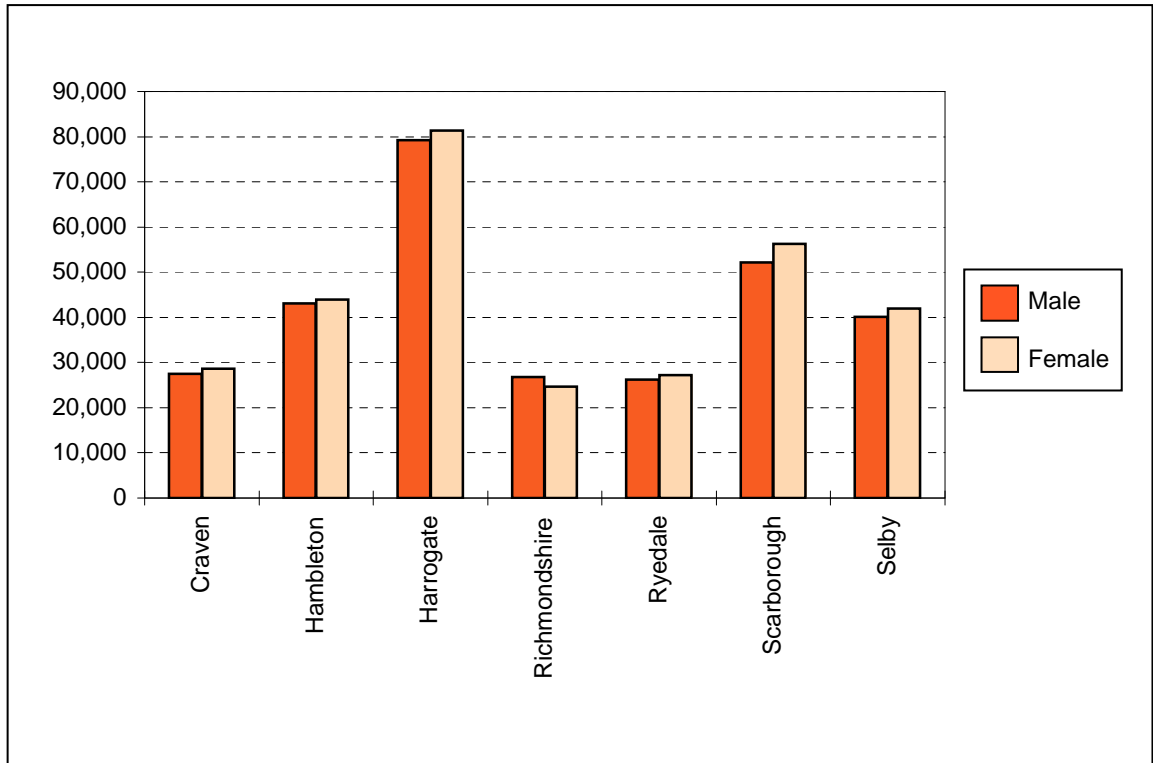
FIGURE 2



Notes

1. Source: Registrar General's Revised Mid-Year Estimates for 2001 & Mid-Year Estimates for 2008; ONS; Crown Copyright
2. Compilation & Analysis: Performance, Research & Intelligence Team, Chief Executive's Group, NYCC
3. Ordnance Survey map data: © Crown Copyright. North Yorkshire County Council. 100017946. (2009)
4. Filename: L:\prits\stats team\population estimates\popest08\DPOP08P.WOR
5. Filename: L:\prits\stats team\population estimates\popest08\MAPGPHP08.XLS

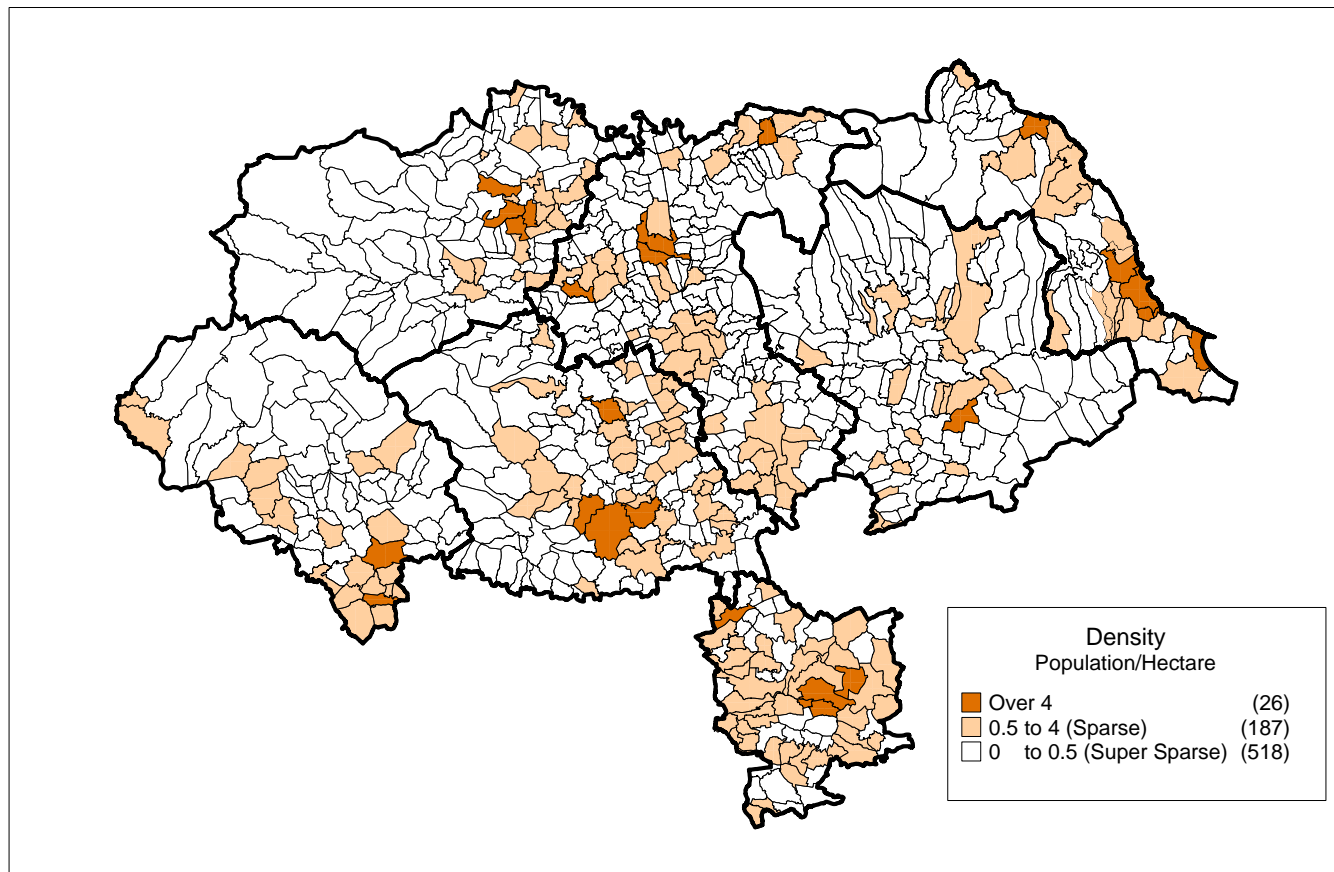
FIGURE 3
MID-2008 POPULATION ESTIMATES
FOR NORTH YORKSHIRE BY GENDER & DISTRICT



Notes

1. Source: Registrar General's Revised Mid-Year Estimates for 2001 & Mid-Year Estimates for 2008; ONS; Crown Copyright
2. Compilation & Analysis: Performance, Research & Information Team, Chief Executive's Group, NYCC
3. Filename: L:\pr\tstats team\population estimates\popest08\GPHP08.XLS

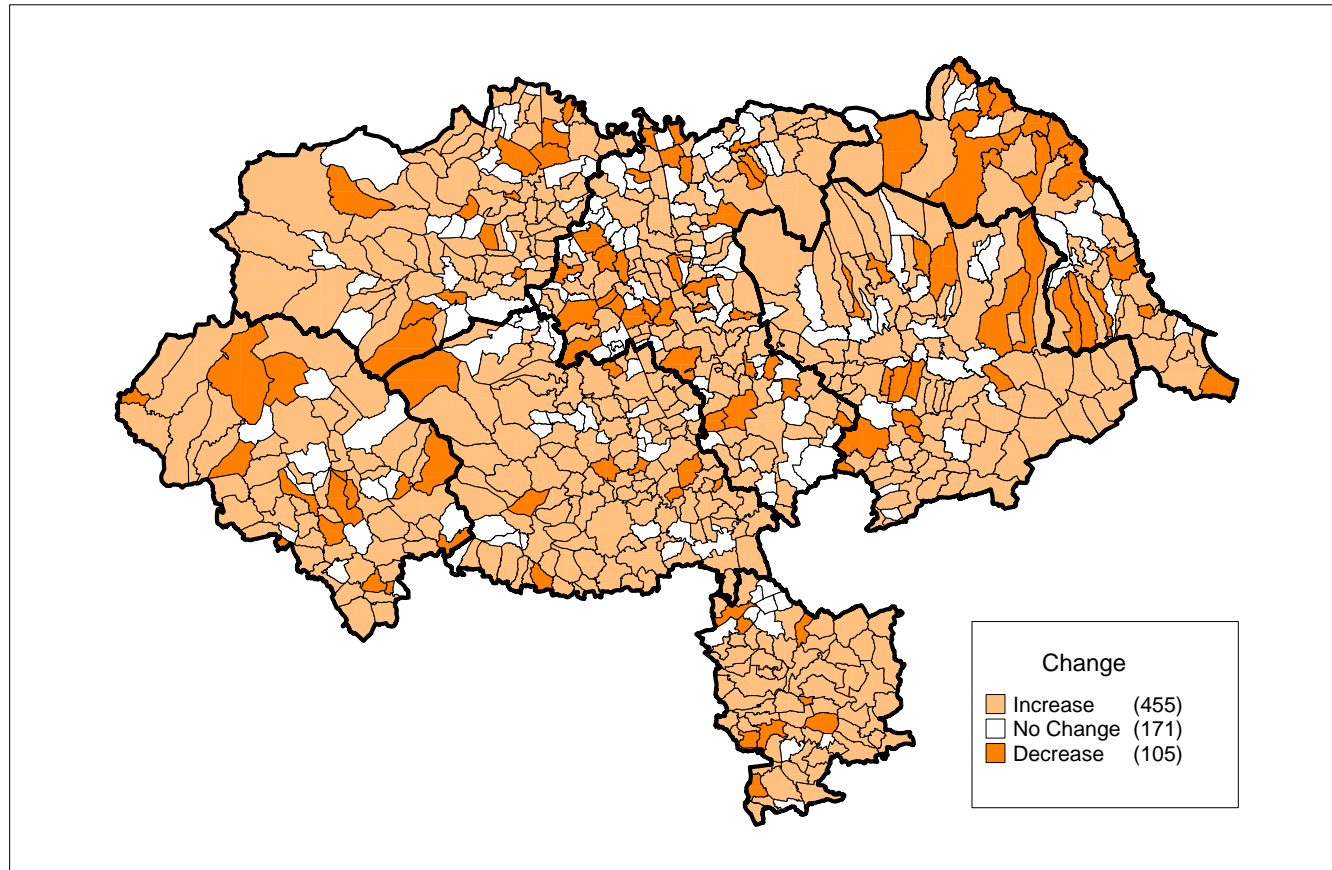
FIGURE 4
MID-2008 PARISH BASED POPULATION DENSITIES FOR NORTH YORKSHIRE



Notes

1. Parish Based Population Estimates are calculated by Performance, Research & Intelligence Team, Chief Executive's Group, NYCC. They are constrained to the Registrar General's District-Based Mid-Year Estimates for 2008.
2. Hectare measurements were produced at the time of the 2001 Census. The figures are sourced from 2001 Census Key Statistics; ONS; Crown Copyright.
3. Compilation & Analysis: Performance, Research & Intelligence Team, Chief Executive's Group, NYCC.
4. Ordnance Survey Map Data: © Crown Copyright. North Yorkshire County Council. 100017946. (2009)
5. Filename L:\pr\tstatsteam\population estimates\popest08\ppop08.wor

FIGURE 5
POPULATION CHANGE IN NORTH YORKSHIRE BY PARISH 2001-2008



Notes

1. Parish Based Population Estimates are calculated by Performance, Research & Intelligence Team, Chief Executive's Group, NYCC. They are constrained to the Registrar General's District-Based Mid-Year Estimates for 2008.
2. Compilation & Analysis: Performance, Research & Intelligence Team, Chief Executive's Group, NYCC.
3. Ordnance Survey Map Data: © Crown Copyright. North Yorkshire County Council. 100017946. (2009)
4. Filename L:\prit\population estimates\popost08\ppop0108.wor

**TABLE 5: POPULATION CHANGE IN NORTH YORKSHIRE
MARKET TOWNS & LARGE SETTLEMENTS 2001-2008**

Town/City	Spatial Unit	Population		Change
		2001	2008	
Bedale	Ward	4440	4650	210
Bentham	Parish [1]	3000	3170	170
Boroughbridge	Parish	3190	3430	240
Catterick	Parish	2750	2810	60
Catterick Garrison	Wards [2]	12500	14310	1810
Easingwold	Ward	4240	4380	140
Filey	Ward	6470	6840	370
Glusburn & Cross Hills	Parish	3910	4020	110
Grassington	Parishes [3]	2140	2190	50
Great Ayton	Parish	4570	4570	0
Harrogate	Wards [4]	73050	73470	420
Hawes	Parish	1120	1130	10
Helmsley	Parish	1560	1560	0
Hunmanby	Parish	3280	3370	90
Ingleton	Parish	2050	2140	90
Killinghall	Parish [5]	5000	5200	200
Kirkbymoorside	Parish	2880	2990	110
Knaresborough	Parish	14780	15120	340
Leyburn	Parish	1850	2230	380
Malton	Wards [6]	11970	12370	400
Masham	Parish	1240	1200	-40
Middleham	Parish	840	870	30
Northallerton	Wards [7]	17660	18400	740
Pickering	Wards [8]	6850	7130	280
Reeth	Parish [9]	690	740	50
Richmond	Wards [10]	8190	8440	250
Ripon	Wards [11]	15940	16790	850
Scarborough	Wards [12]	50120	51460	1340
Selby	Mixed [13]	22530	24000	1470
Settle	Parish	2420	2650	230
Sherburn-in-Elmet	Parish	6230	6380	150
Skipton	Wards [14]	14330	14520	190
Stokesley	Parish	4730	4840	110
Sutton	Parish	3490	3660	170
Tadcaster	Parish [15]	6050	6010	-40
Thirsk	Wards [16]	9340	9670	330
Thorpe Willoughby	Parish	2820	2710	-110
Whitby	Wards [17]	13580	13570	-10

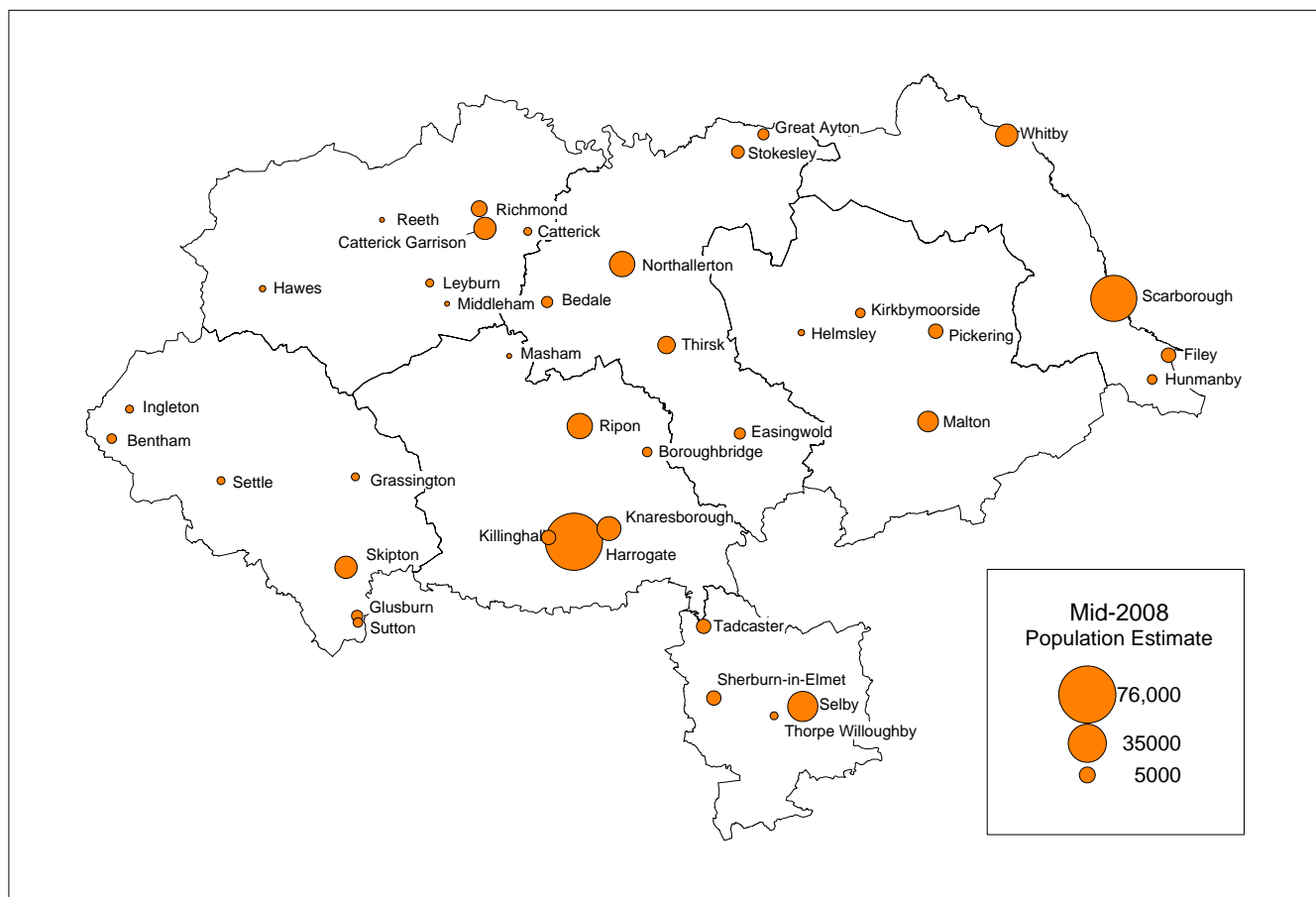
[Notes]

1. Figures are for the parish of Bentham, including High and Low Bentham.
2. The figures for Catterick Garrison include the wards of Colburn, Hipswell and Scotton, but exclude Catterick parish.
3. The figures for Grassington include the parishes of Grassington and Theshfield.
4. Harrogate includes the wards of Bilton, Granby, Harlow Moor, High Harrogate, Hookstone, Low Harrogate, New Park, Pannal, Rossett, Saltergate, Starbeck, Stray and Woodfield.
5. Figures are for the parish of Killinghall. This includes parts of Killinghall and Saltergate wards.
6. The figures for Malton include the wards of Malton, Norton East and Norton West.
7. These figures include the wards of Northallerton North, Northallerton Central, Northallerton Broomfield, Romanby and Brompton.
8. The figures for Pickering include the wards of Pickering East and Pickering West.
9. The figures for Reeth are for the parish of Reeth, Fremington & Healaugh.
10. The wards of Richmond Central, East & West have been combined to provide figures for Richmond as a whole.
11. Ripon includes the wards of Ripon Minster, Ripon Moorside and Ripon Spa.
12. Scarborough includes the wards of Newby, Northstead, North Bay, Castle, Central, Ramshill, Weaponess, Eastfield, Falsgrave Park, Stepney and Woodlands.
13. Selby includes the wards of Selby North, South & West and parishes of Barlby with Osgodby & Brayton.
14. Skipton includes the wards of Skipton East, North, South and West
15. Figures are for Tadcaster parish. This includes parts of Tadcaster East and West wards.
16. Thirsk includes the wards of Thirsk and Sowerby.
17. Whitby includes the wards of Whitby West Cliff, Mayfield and Streonshalh.

Source & Definitions

1. Parish & Ward Population Estimates are calculated by Performance, Research & Intelligence, Chief Executive's Group, NYCC. They are constrained to the Registrar General's Revised Mid-Year Estimates for 2001 and Mid-Year Estimates for 2008 (Revised 2010); ONS; Crown Copyright.
2. Market towns and settlements are an aggregation of wards and parishes which comprise the built-up area. They are a best-fit, rather than a precise definition, and may include adjoining residential areas.
3. Large settlements are defined as having a 2001 Mid-Year population of 2750 or over. Mkt Towns have a market at least once/week.
4. Filename: L:\pr\t\stats team\population estimates\popest08\town.xls

FIGURE 6
MID-2008 TOWN & LARGE SETTLEMENT POPULATION ESTIMATES



Notes

1. Parish and ward Based Population Estimates are calculated by Performance, Research and Intelligence Team, Chief Executive's Group, NYCC. They are constrained to the Registrar General's District-Based Mid-Year Estimates for 2008.
2. Compilation & Analysis: Performance, Research and Intelligence Team, Chief Executive's Group, NYCC.
3. Ordnance Survey Map Data: © Crown Copyright. North Yorkshire County Council. 100017946. (2009)
4. Filename: L:\pr\tstats team\population_estimates\popest08\graduated_towns_2008 parish.WOR

Parish Population Estimates by District 2001 & 2008

CRAVEN DISTRICT POPULATION ESTIMATES

Parish	Population	
	2001	2008
AIRTON	180	170
APPLETREEWICK	230	220
ARNCLIFFE	70	80
AUSTWICK	480	480
BANK NEWTON	50	60
BARDEN	90	90
BEAMSLEY	150	140
BENTHAM	3000	3170
BOLTON ABBEY	110	120
BORDLEY	20	30
BRADLEYS BOTH	1160	1280
BROUGHTON	80	90
BUCKDEN	180	210
BURNSALL	110	100
BURTON IN LONSDALE	580	570
CALTON	60	70
CARLETON	970	1070
CLAPHAM CUM NEWBY	660	680
CONISTON COLD	190	210
CONISTONE WITH KILNSEY	120	120
CONONLEY	1080	1010
COWLING	2100	2260
CRACOE	170	170
DRAUGHTON	300	320
ELSLACK	90	90
EMBSAY WITH EASTBY	1760	1780
ESHTON	80	110
FARNHILL	550	520
FLASBY WITH WINTERBURN	90	80
GARGRAVE	1770	1720
GIGGLESWICK	1410	1370
GLUSBURN & CROSS HILLS	3910	4020
GRASSINGTON	1160	1180
HALTON EAST	100	120
HALTON GILL	70	50
HALTON WEST	70	80
HANLITH	30	30
HARTLINGTON	70	70
HAWKSWICK	70	80
HAZLEWOOD WITH STORITHS	100	100
HEBDEN	220	230
HELLIFIELD	1060	1350
HETTON	130	110
HORTON IN RIBBLESDALE	500	480
INGLETON	2050	2140
KETTLEWELL WITH STARBOTTON	320	330
KILDWICK	190	190
KIRKBY MALHAM	100	110
LANGCLIFFE	350	380
LAWKLAND	240	250
LINTON	140	140
LITTON	90	90
LONG PRESTON	680	870
LOTHERSDALE	500	510
MALHAM	160	160
MALHAM MOOR	70	80
MARTONS BOTH	210	210
NAPPA	20	10
OTTERBURN	40	50
RATHMELL	270	310
RYLSTONE	120	130
SCOSTHROP	80	80
SETTLE	2420	2650
SKIPTON	14330	14520
STAINFORTH	240	240
STIRTON WITH THORLBY	170	170
SUTTON	3490	3660

Parish	Population	
	2001	2008
SWINDEN	20	20
THORNTON IN CRAVEN	410	420
THORNTON IN LONSDALE	310	330
THORPE	40	40
THRESHFIELD	980	1010
WIGGLESWORTH	280	310
DISTRICT TOTAL	53700	55700

Notes

1. Population Estimates are calculated by Performance, Research and Intelligence, Chief Executive's Group, NYCC. They are constrained to the Registrar General's District Based Revised Mid-Year Estimates for 2001 & Mid-Year Estimates for 2008 (Revised 2010); ONS; Crown Copyright.
2. All figures are rounded independently and may not sum.
3. The methodologies used in the calculation of Parish Population Estimates, and in some cases the parish boundaries, vary over time. These estimates are not directly comparable with those for earlier years.
4. File L:\prits\stats team\population estimates\popest08\popsh0108.xls

HAMBLETON DISTRICT POPULATION ESTIMATES

Parish	Population		Parish	Population	
	2001	2008		2001	2008
AINDERBY MIRES WITH HOLTBY	30	30	HOWE	20	20
AINDERBY QUERNHOW	50	60	HOWGRAVE	10	10
AINDERBY STEEPLE	210	220	HUBY	1160	1130
AISKEW	2170	2380	HUSTHWAITE	420	440
ALDWARK	120	140	HUTTON BONVILLE	90	100
ALNE	710	750	HUTTON RUDBY	1580	1580
ANGRAM GRANGE	20	20	HUTTON-SESSAY	100	110
APPLETON WISKE	480	460	INGLEBY ARNCLIFFE	310	300
BAGBY	470	540	INGLEBY GREENHOW	380	380
BALK	50	60	KEPWICK	80	80
BEDALE	3120	3220	KILBURN HIGH AND LOW	180	210
BENINGBROUGH	60	60	KILDALE	140	160
BILSDALE MIDCABLE	290	300	KILLERBY	20	20
BIRDFORTH	10	20	KIPLIN	60	60
BIRKBY	40	40	KIRBY KNOWLE	70	80
BOLTBY	150	160	KIRBY SIGSTON	80	100
BORROWBY	390	390	KIRBY WISKE	110	100
BRAFFERTON	260	280	KIRKBY	310	310
BRANDSBY-CUM-STEARSBY	240	250	KIRKBY FLEETHAM WITH FENCOTE	470	460
BROMPTON	1910	2040	KIRKLINGTON-CUM-UPSLAND	200	200
BURNESTON	240	240	KNAYTON WITH BRAWITH	330	290
BURRILL WITH COWLING	80	80	LANDMOTH-CUM-CATTO	20	20
CARLTON	300	280	LANGTHORNE	60	70
CARLTON HUSTHWAITE	170	160	LEAKE	10	10
CARLTON MINIOTT	930	920	LINTON-ON-OUSE	1210	1290
CARTHORPE	240	260	LITTLE AYTON	120	140
CATTON	110	130	LITTLE BUSBY	10	20
CLIFTON-ON-YORE	40	40	LITTLE LANGTON	40	40
COTCLIFFE	10	10	LITTLE SMEATON	50	40
COWESBY	70	70	LOW WORSALL	260	250
COXWOLD	190	200	MARTON-CUM-MOXBY	60	80
CRAKEHALL	590	570	MAUNBY	140	120
CRATHORNE	170	170	MIDDLETON-ON-LEVEN	100	130
CRAYKE	390	400	MORTON-ON-SWALE	530	510
CROSBY	20	20	MYTON-ON-SWALE	150	150
DALBY-CUM-SKEWSBY	80	100	NETHER SILTON	90	90
DALTON	500	580	NEWBURGH	60	60
DANBY WISKE WITH LAZENBY	290	300	NEWBY	230	230
DEIGHTON	90	100	NEWBY WISKE	170	170
EASBY	100	110	NEWSHAM WITH BRECKENBROUGH	140	130
EASINGWOLD	4240	4380	NEWTON-ON-OUSE	530	530
EAST COWTON	640	650	NORTH KILVINGTON	20	30
EAST HARLSEY	270	280	NORTH OTTERINGTON	30	40
EAST ROUNTON	90	100	NORTHALLERTON	9700	10090
EAST TANFIELD	30	30	OSMOTHERLEY	610	590
ELDMIRE WITH CRAKEHILL	30	30	OULSTON	100	90
ELLERBECK	40	50	OVER DINSDALE	70	90
EXELBY, LEEMING AND NEWTON	2260	2520	OVER SILTON	70	70
FACEBY	210	180	OVERTON	50	60
FARLINGTON	120	130	PICKHILL WITH ROXBY	410	400
FAWDINGTON	10	10	PICTON	110	120
FELIXKIRK	100	100	POTTO	290	310
FIRBY	30	30	RAND GRANGE	10	10
FLAWITH	70	80	RASKELF	520	510
GATENBY	30	40	ROMANBY	6050	6270
GIRSBY	40	30	ROOKWITH	20	20
GREAT AND LITTLE BROUGHTON	950	950	RUDBY	310	310
GREAT AYTON	4570	4570	SANDHUTTON	250	290
GREAT BUSBY	70	70	SCRUTON	440	430
GREAT LANGTON	100	110	SEAMER	580	570
GREAT SMEATON	180	180	SESSAY	310	320
HACKFORTH	150	150	SEXHOW	20	30
HELPERBY	510	490	SHIPTON	690	710
HIGH WORSALL	40	40	SINDERBY	140	160
HOLME	40	60	SKIPTON-ON-SWALE	60	60
HOOD GRANGE	10	10	SKUTTERSKEFFE	130	120
HORNBY	210	220	SNAPE WITH THORP	410	390

HAMBLETON DISTRICT POPULATION ESTIMATES (Continued)

Parish	Population	
	2001	2008
SOUTH COWTON	100	110
SOUTH KILVINGTON	230	230
SOUTH OTTERINGTON	340	340
SOWERBY	3700	4010
SOWERBY-UNDER-COTCLIFFE	30	40
STILLINGTON	740	790
STOKESLEY	4730	4840
SUTTON WITH HOWGRAVE	60	60
SUTTON-ON-THE-FOREST	750	740
SUTTON-UNDER-WHITESTONECLIFFE	270	270
SWAINBY WITH ALLERTHORPE	10	10
THEAKSTON	130	120
THIMBLEBY	80	80
THIRKLEBY HIGH AND LOW WITH OSGODBY	220	250
THIRLBY	130	110
THIRN	80	90
THIRSK	4710	4740
THOLTHORPE	270	310
THORMANBY	100	110
THORNBROUGH	20	10
THORNTON WATLASS	180	210
THORNTON-LE-BEANS	250	240
THORNTON-LE-MOOR	300	310
THORNTON-LE-STREET	90	110
THORNTON-ON-THE-HILL	30	30
THRINTOFT	130	130
TOLLERTON	820	930
TOPCLIFFE	1340	1280
UPSALL	60	60
WARLABY	40	40
WELBURY	250	250
WELL	260	270
WEST HARLSEY	30	30
WEST ROUNTON	170	160
WEST TANFIELD	530	510
WHENBY	70	60
WHITWELL	40	40
WHORLTON	560	580
WILDON GRANGE	30	30
WINTON, STANK AND HALLIKELD	60	70
YAFFORTH	170	170
YEARSLEY	110	120
YOULTON	50	50
DISTRICT TOTAL	84200	86900

Notes

- Population Estimates are calculated by Performance, Research and Intelligence, Chief Executive's Group, NYCC. They are constrained to the Registrar General's District Based Revised Mid-Year Estimates for 2001 & Mid-Year Estimates for 2008 (Revised 2010); ONS; Crown Copyright.
- All figures are rounded independently and may not sum.
- The methodologies used in the calculation of Parish Population Estimates, and in some cases the parish boundaries, vary over time. These estimates are not directly comparable with those for earlier years.
- File L:\priet\stats team\population estimates\popest08\popppsh0108.xls

HARROGATE DISTRICT POPULATION ESTIMATES

Parish	Population		Parish	Population	
	2001	2008		2001	2008
ALDFIELD	80	80	KIRKBY MALZEARD	780	860
ALLERTON MAULEVERER WITH HOPPERTON	130	140	KIRKBY OVERBLOW	480	500
ARKENDALE	280	310	KNARESBOROUGH	14780	15120
ASENBY	290	290	LANGTHORPE	770	830
ASKWITH	220	220	LAVERTON	270	310
AZERLEY	360	410	LEATHLEY	190	230
BALDEBSBY	250	250	LINDLEY	50	70
BEWERLEY	730	800	LINDRICK WITH STUDLEY ROYAL AND FOUNTAINS	60	60
BILTON-IN-AINSTY WITH BICKERTON	510	510	LITTLE OUSEBURN	230	260
BIRSTWITH	760	790	LITTLE RIBSTON	170	180
BISHOP MONKTON	780	830	LITTLE TIMBLE	10	10
BISHOP THORNTON	520	550	LITTLETHORPE	510	550
BLUBBERHOUSES	30	30	LONG MARSTON	570	580
BOROUGHBRIDGE	3190	3430	MARKINGFIELD HALL	10	10
BREARTON	140	150	MARKINGTON WITH WALLERTHWAITE	610	690
BRIDGE HEWICK	50	50	MARTON CUM GRAFTON	520	490
BURTON LEONARD	650	690	MARTON-LE-MOOR	170	190
BURTON-ON-YORE	80	70	MASHAM	1240	1200
CASTLEY	70	70	MELMERBY	320	310
CATTAL	90	120	MENWITH WITH DARLEY	1500	1450
CLINT CUM HAMLETS	460	480	MIDDLETON	100	100
COLSTERDALE	10	20	MIDDLETON QUERNHOW	60	60
CONEYTHORPE AND CLARETON	100	90	MILBY	160	180
COPGROVE	120	110	MOOR MONKTON	300	350
COPT HEWICK	190	210	NESFIELD WITH LANGBAR	160	160
CUNDALL WITH LECKBY	100	110	NEWALL WITH CLIFTON	140	150
DACRE	660	660	NEWBY WITH MULWITH	40	40
DENTON	100	120	NIDD	170	170
DISHFORTH	720	850	NORTH DEIGHTON	80	70
DUNSFORTHS	200	220	NORTH RIGTON	440	430
EAVESTONE	20	20	NORTH STAINLEY WITH SLENINGFORD	600	670
ELLENTHORPE	30	40	NORTON CONYERS	30	20
ELLINGSTRING	80	80	NORTON-LE-CLAY	460	490
ELLINGTON HIGH AND LOW	60	60	NORWOOD	200	210
FARNHAM	150	200	NUN MONKTON	260	280
FARNLEY	320	300	PANNAL	280	380
FEARBY	120	130	PLOMPTON	120	120
FELLISCLIFFE	300	330	RAINTON WITH NEWBY	350	380
FERRENSBY	180	190	RIPLEY	240	270
FEWSTON	140	160	RIPON	15940	16790
FLAXBY	100	110	ROECLIFFE	190	190
FOLLIFOOT	580	600	SAWLEY	300	320
FOUNTAINS EARTH	160	180	SCOTTON	570	590
GIVENDALE	10	20	SCRIVEN	200	240
GOLDSBOROUGH	490	490	SHAROW	550	570
GRANTLEY	140	140	SICKLINGHALL	310	310
GREAT OUSEBURN	550	600	SKELDING	30	30
GREAT RIBSTON WITH WALSHFORD	70	70	SKELTON-ON-URE	310	340
GREAT TIMBLE	100	100	SOUTH STAINLEY WITH CAYTON	170	150
GREEN HAMMERTON	660	710	SPOFFORTH WITH STOCKELD	1120	1160
GREWELTHORPE	520	520	STAINBURN	110	120
HAMPSTHWAITE	950	1070	STAVELEY	440	450
HARROGATE (NON-CIVIL)	70720	71260	STONEBECK DOWN	180	200
HARTWITH CUM WINSLEY	980	1120	STONEBECK UP	110	90
HVERAH PARK	30	40	STUDLEY ROGER	140	150
HEALEY	110	110	SWINTON WITH WARTHERMARSKE	110	150
HIGH AND LOW BISHOPSIDE	2160	2200	THORNTHWAITE WITH PADSIDE	200	220
HUMBERTON	40	50	THORNTON BRIDGE	30	30
HUNSGORE	120	130	THORNVILLE	20	20
HUTTON CONYERS	200	220	THORPE UNDERWOODS	250	380
ILTON-CUM-POTT	60	60	THRUSCROSS	90	100
KEARBY WITH NETHERBY	180	210	TOCKWITH	1630	1560
KILLINGHALL	5000	5200	WALKINGHAM HILL WITH OCCANEY	30	30
KIRBY HALL	20	10	WARSILL	60	70
KIRBY HILL	360	400	WATH	230	230
KIRK DEIGHTON	390	430	WEETON	960	980
KIRK HAMMERTON	520	530	WESTON	190	200

HARROGATE DISTRICT POPULATION ESTIMATES (Continued)

Parish	Population	
	2001	2008
WESTWICK	10	10
WHIXLEY	740	850
WIGHILL	190	190
WILSTROP	40	50
WINKSLEY	130	150
DISTRICT TOTAL	151500	156100

Notes

1. Population Estimates are calculated by Performance, Research and Intelligence, Chief Executive's Group, NYCC. They are constrained to the Registrar General's District Based Revised Mid-Year Estimates for 2001 & Mid-Year Estimates for 2008 (Revised 2010); ONS; Crown Copyright.
2. All figures are rounded independently and may not sum.
3. The methodologies used in the calculation of Parish Population Estimates, and in some cases the parish boundaries, vary over time. These estimates are not directly comparable with those for earlier years.
4. File L:\prrit\stats team\population estimates\popest08\popsh0108.xls

RICHMONDSHIRE DISTRICT POPULATION ESTIMATES

Parish	Population	
	2001	2008
AKEBAR	20	20
ALDBROUGH	330	350
APPLETON EAST AND WEST	80	100
ARKENGARHTDALE	200	190
ARRATHORNE	60	80
ASKE	120	120
ASKRIGG	410	500
AYSGARTH	200	220
BAINBRIDGE	440	460
BARDEN	50	40
BARTON	890	850
BELLERBY	350	380
BISHOPDALE	30	30
BOLTON-ON-SWALE	60	60
BROMPTON-ON-SWALE	1620	1850
BROUGH WITH ST. GILES	340	640
BURTON-CUM-WALDEN	310	320
CALDBERGH WITH EAST SCRAFTON	40	40
CALDWELL	120	140
CARLTON HIGHDALE	100	90
CARLTON TOWN	130	120
CARPERBY-CUM-THORESBY	220	250
CASTLE BOLTON WITH EAST AND WEST BOLTON	50	60
CATTERICK	2750	2810
CLEASBY	150	140
CLIFFE	30	30
COLBURN	3610	4390
CONSTABLE BURTON	160	160
COVERHAM WITH AGGLETHORPE	70	60
CROFT-ON-TEES	430	460
DALTON	150	180
DALTON-ON-TEES	240	260
DOWNHOLME	40	30
EASBY	100	120
EAST HAUXWELL	30	30
EAST LAYTON	70	70
EAST WITTON	260	250
ELLERTON ABBEY	20	20
ELLERTON-ON-SWALE	120	130
EPPLEBY	270	300
ERYHOLME	80	90
FINGHALL	160	150
FORCETT AND CARKIN	140	140
GARRISTON	20	30
GAYLES	100	110
GILLING WITH HARTFORTH AND SEDBURY	560	540
GRINTON	180	190
HARMBY	360	400
HAWES	1120	1130
HIGH ABBOTTSIDE	210	230
HIPSWELL	4320	5190
HORNBY	70	110
HUDSWELL	260	290
HUNTON	420	500
HUTTON HANG	10	10
KIRBY HILL	60	60
LEYBURN	1850	2230
LOW ABBOTTSIDE	100	110
MANFIELD	260	280
MARRICK	130	160
MARSKE	100	130
MELBECKS	290	270
MELMERBY	30	30
MELSONBY	700	790
MIDDLEHAM	840	870
MIDDLETON TYAS	620	590
MOULTON	210	200

Parish	Population	
	2001	2008
MUKER	310	320
NEW FOREST	10	20
NEWBIGGIN	80	100
NEWSHAM	280	320
NEWTON MORRELL	30	30
NEWTON-LE-WILLOWS	390	430
NORTH COWTON	550	540
PATRICK BROMPTON	160	180
PRESTON-UNDER-SCAR	160	180
RAVENSWORTH	240	270
REDMIRE	310	330
REETH, FREMINGTON AND HEALAUGH	690	740
RICHMOND	8190	8440
SCORTON	910	1010
SCOTTON	4330	4530
SKEEBY	380	390
SPENNITHORNE	150	160
ST. MARTIN'S	240	200
STAINTON	10	10
STANWICK ST. JOHN	140	160
STAPLETON	210	220
THORALBY	150	170
THORNTON RUST	130	140
THORNTON STEWARD	170	200
TUNSTALL	250	310
UCKERBY	50	70
WALBURN	10	10
WENSLEY	120	120
WEST HAUXWELL	10	20
WEST LAYTON	40	40
WEST SCRAFTON	70	80
WEST WITTON	330	350
WHASHTON	130	130
DISTRICT TOTAL	47100	51400

Notes

- Population Estimates are calculated by Performance, Research and Intelligence, Chief Executive's Group, NYCC. They are constrained to the Registrar General's District Based Revised Mid-Year Estimates for 2001 & Mid-Year Estimates for 2008 (Revised 2010); ONS; Crown Copyright.
- All figures are rounded independently and may not sum.
- The methodologies used in the calculation of Parish Population Estimates, and in some cases the parish boundaries, vary over time. These estimates are not directly comparable with those for earlier years.
- File L:\pri\stats team\population estimates\popest08\poppsh0108.xls

RYEDALE DISTRICT POPULATION ESTIMATES

Parish	Population		Parish	Population	
	2001	2008		2001	2008
ACKLAM	180	190	NEWTON	150	150
AISLABY	100	90	NORMANBY	130	130
ALLERSTON	310	300	NORTON-ON-DERWENT	6940	7290
AMOTHERBY	360	380	NUNNINGTON	240	260
AMPLEFORTH	1320	1510	OLD BYLAND AND SCAWTON	140	140
APPLETON-LE-MOORS	180	200	OLDSTEAD	70	80
APPLETON-LE-STREET WITH EASTHORPE	120	120	OSWALDKIRK	230	270
BARTON-LE-STREET	190	190	PICKERING	6950	7240
BARTON-LE-WILLOWS	190	220	POCKLEY	90	100
BARUGH (GREAT AND LITTLE)	160	190	RIEVAULX	90	90
BEADLAM	250	240	RILLINGTON	1070	1030
BIRDSALL	180	190	ROSEDALE EAST SIDE	290	300
BRANSDALE	90	120	ROSEDALE WEST SIDE	120	120
BRAWBY	160	160	SALTON	100	110
BROUGHTON	230	240	SAND HUTTON	190	220
BULMER	170	190	SCACKLETON	110	120
BURYTHORPE	290	290	SCAGGLETHORPE	240	250
BUTTERCRAMBE WITH BOSSALL	100	110	SCAMPSTON	330	370
BYLAND WITH WASS	120	130	SCRAYINGHAM	160	180
CAWTON	50	70	SETTRINGTON	340	370
CLAXTON	220	210	SHERBURN	790	860
COLD KIRBY	90	90	SHERIFF HUTTON	1040	990
CONEYSTHORPE	80	80	SINNINGTON	320	340
COULTON	70	80	SLINGSBY	630	640
CRAMBE	70	80	SOUTH HOLME	30	30
CROPTON	250	230	SPAUNTON	60	70
EBBERSTON AND YEDINGHAM	560	590	SPROXTON	120	120
EDSTONE	100	110	STONEGRAVE	90	100
FADMOOR	100	110	SWINTON	470	540
FARNDALE EAST	100	110	TERRINGTON	520	540
FARNDALE WEST	110	120	THIXENDALE	170	190
FLAXTON	330	350	THORNTON-LE-CLAY	190	210
FOSTON	80	80	THORNTON-LE-DALE	1840	1830
FOXHOLES	190	220	THORPE BASSETT	100	120
FRYTON	70	60	UPPER HELMSLEY	40	30
GANTON	200	220	WARTHILL	240	260
GATE HELMSLEY	290	320	WEAVERTHORPE	340	400
GILLAMOOR	170	170	WELBURN (MALTON)	490	480
GILLING EAST	270	290	WELBURN (KIRKBYMOORSIDE)	60	60
GRIMSTONE	50	60	WESTOW	320	350
HABTON	320	320	WHARRAM	100	120
HAROME	250	260	WHITWELL-ON-THE-HILL	140	160
HARTOFT	60	70	WILLERBY	710	770
HARTON	60	70	WILTON	120	130
HAWNBY	220	230	WINTRINGHAM	180	210
HELMSLEY	1560	1560	WOMBLETON	340	340
HENDERSKELFE	60	50	WRELTON	240	240
HESLERTON	410	420	DISTRICT TOTAL	50900	53300
HOVINGHAM	370	390			
HOWSHAM	120	150			
HUTTON-LE-HOLE	200	200			
HUTTONS AMBO	290	310			
KIRBY GRINDALYTHE	250	300			
KIRBY MISPERTON	320	370			
KIRKBYMOORSIDE	2880	2990			
LANGTON	120	130			
LASTINGHAM	100	90			
LEAVENING	360	400			
LEVISHAM	90	90			
LILLINGS AMBO	150	160			
LOCKTON	270	280			
LUTTONS	370	390			
MALTON	5030	5080			
MARISHES	120	120			
MARTON	200	240			
MIDDLETON	350	390			
NAWTON	550	580			

Notes

- Population Estimates are calculated by Performance, Research and Intelligence, Chief Executive's Group, NYCC. They are constrained to the Registrar General's District Based Revised Mid-Year Estimates for 2001 & Mid-Year Estimates for 2008 (Revised 2010); ONS; Crown Copyright.
- All figures are rounded independently and may not sum.
- The methodologies used in the calculation of Parish Population Estimates, and in some cases the parish boundaries, vary over time. These estimates are not directly comparable with those for earlier years.
- File L:\priti\stats team\population estimates\popest08\poppsh0108.xls

SCARBOROUGH DISTRICT POPULATION ESTIMATES

Parish	Population	
	2001	2008
AISLABY	280	270
BARNBY	80	70
BORROWBY	60	70
BROMPTON	520	500
BROXA-CUM-TROUTSDALE	40	40
BURNISTON	1390	1470
CAYTON	2410	2470
CLOUGHTON	710	720
COMMONDALE	130	130
DANBY	1520	1470
DARNCOMBE-CUM-LANGDALE END	40	40
EAST AYTON	1690	1690
EASTFIELD	5860	5810
EGTON	460	450
ELLERBY	30	30
ESKDALESIDE CUM UGGLEBARNBY	2250	2300
FILEY	6820	7220
FOLKTON	460	500
FYLINGDALES	1480	1430
FYLINGDALES (LANDS COMMON)	10	10
GLAISDALE	970	990
GOATHLAND	410	430
GRISTHORPE	390	390
GROSMONT	330	300
HACKNESS	120	150
HARWOOD DALE	130	130
HAWSKER-CUM-STAINSACRE	760	760
HINDERWELL	2010	1890
HUNMANBY	3280	3370
HUTTON BUSCEL	310	340
HUTTON MULGRAVE	50	50
IRTON	330	340
LEBBERSTON	180	210
LYTHE	460	400
MICKLEBY	160	160
MUSTON	320	350
NEWBY AND SCALBY	9760	9710
NEWHOLM-CUM-DUNSLEY	210	210
NEWTON MULGRAVE	40	40
OSGODBY	1190	1240
REIGHTON	390	370
ROXBY	120	130
SCARBOROUGH (NON-CIVIL)	37710	38990
SEAMER	3770	4330
SILPHO	30	30
SNAINTON	890	900
SNEATON	190	180
STAINTON DALE	320	310
SUFFIELD-CUM-EVERLEY	60	70
UGTHORPE	200	190
WEST AYTON	830	810
WESTERDALE	170	190
WHITBY	13580	13570
WYKEHAM	290	280
DISTRICT TOTAL	106200	108500

Notes

- Population Estimates are calculated by Performance, Research and Intelligence, Chief Executive's Group, NYCC. They are constrained to the Registrar General's District Based Revised Mid-Year Estimates for 2001 & Mid-Year Estimates for 2008 (Revised 2010); ONS; Crown Copyright.
- All figures are rounded independently and may not sum.
- The methodologies used in the calculation of Parish Population Estimates, and in some cases the parish boundaries, vary over time. These estimates are not directly comparable with those for earlier years.
- File L:\prrit\stats team\population estimates\popost08\popppsh0108.xls

SELBY DISTRICT POPULATION ESTIMATES

Parish	Population	
	2001	2008
ACASTER SELBY	60	50
APPLETON ROEBUCK	680	680
BALNE	230	240
BARKSTON ASH	340	370
BARLBY WITH OSGODBY	4540	4740
BARLOW	570	770
BEAL	720	800
BIGGIN	120	140
BILBROUGH	320	320
BIRKIN	150	140
BOLTON PERCY	310	310
BRAYTON	4950	5340
BROTHERTON	670	740
BURN	500	470
BURTON SALMON	420	430
BYRAM CUM SUTTON	1410	1380
CAMBLESFORTH	1530	1570
CARLTON	1830	1910
CATTERTON	60	60
CAWOOD	1430	1590
CHAPEL HADDLESEY	200	210
CHURCH FENTON	790	1120
CLIFFE	1140	1300
COLTON	150	150
CRIDLING STUBBS	150	160
DRAX	380	390
EGGBOROUGH	1580	1830
ESCRICK	1240	1310
FAIRBURN	810	820
GATEFORTH	200	230
GRIMSTON	60	50
HAMBLETON	1710	1720
HEALAUGH	160	170
HECK	210	230
HEMINGBROUGH	1750	1990
HENSALL	750	850
HILLAM	690	760
HIRST COURTNEY	300	310
HUDDLESTON WITH NEWTHORPE	90	100
KELFIELD	430	470
KELLINGTON	990	980
KIRK SMEATON	340	380
KIRKBY WHARFE WITH NORTH MILFORD	90	90
LEAD	30	30
LITTLE FENTON	90	110
LITTLE SMEATON	270	290
LONG DRAX	120	150
MONK FRYSTON	860	1010
NEWLAND	200	230
NEWTON KYME CUM TOULSTON	280	290
NORTH DUFFIELD	1210	1280
OXTON	20	20
RICCALL	2320	2410
RYTHER CUM OSSENDYKE	230	240
SAXTON WITH SCARTHINGWELL	470	560
SELBY	13040	13920
SHERBURN IN ELMET	6230	6380
SKIPWITH	230	280
SOUTH MILFORD	1800	2120
STAPLETON	60	50
STEETON	30	30
STILLINGFLEET	340	420
STUTTON WITH HAZLEWOOD	1000	990
TADCASTER	6050	6010
TEMPLE HIRST	130	130
THORGANBY	340	390

Parish	Population	
	2001	2008
THORPE WILLOUGHBY	2820	2710
TOWTON	220	240
ULLESKELF	840	910
WALDEN STUBBS	70	70
WEST HADDLESEY	180	200
WHITLEY	570	830
WISTOW	1140	1240
WOMERSLEY	360	390
DISTRICT TOTAL	76600	81600

Notes

- Population Estimates are calculated by Performance, Research and Intelligence, Chief Executive's Group, NYCC. They are constrained to the Registrar General's District Based Revised Mid-Year Estimates for 2001 & Mid-Year Estimates for 2008 (Revised 2010); ONS; Crown Copyright.
- All figures are rounded independently and may not sum.
- The methodologies used in the calculation of Parish Population Estimates, and in some cases the parish boundaries, vary over time. These estimates are not directly comparable with those for earlier years.
- File L:\pril\stats team\population estimates\popest08\poppsh0108.xls