

Selby District Core Strategy

Proposals Map

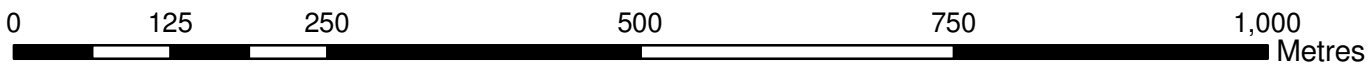
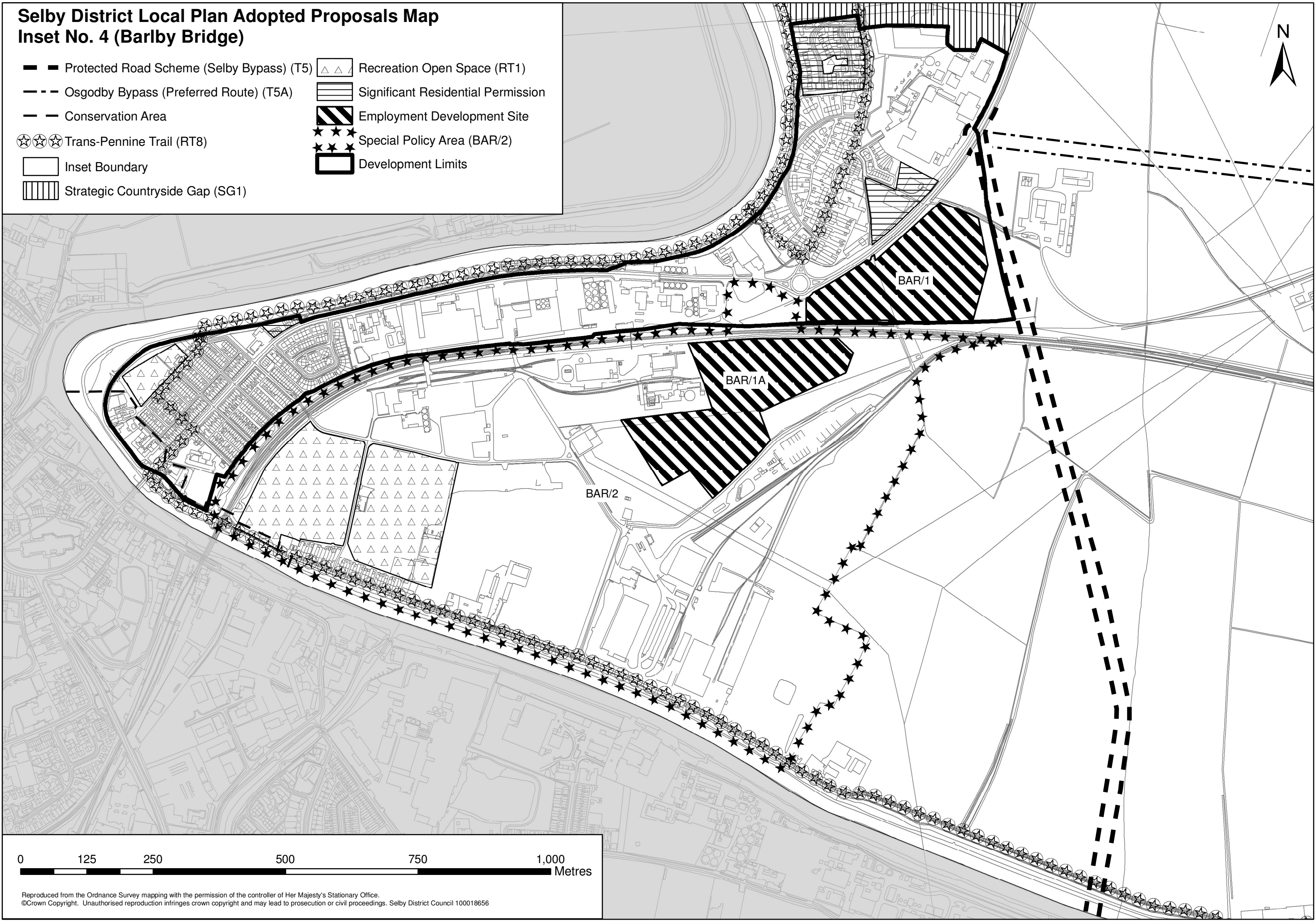
May 2011



Selby District Local Plan Adopted Proposals Map

Inset No. 4 (Barlby Bridge)

- Protected Road Scheme (Selby Bypass) (T5)
- Osgodby Bypass (Preferred Route) (T5A)
- Conservation Area
- Trans-Pennine Trail (RT8)
- Inset Boundary
- Strategic Countryside Gap (SG1)
- Recreation Open Space (RT1)
- Significant Residential Permission
- Employment Development Site
- Special Policy Area (BAR/2)
- Development Limits



Selby District Submission Draft Core Strategy Amended Proposals Map - Inset No. 4 (Barlby Bridge)

- Osgodby Bypass (Preferred Route) (T5A)
- Conservation Area
- Development Limit
- ☆☆☆ Trans-Pennine Trail (RT8)
- Inset Boundary
- Strategic Countryside Gap (SG1)
- Recreation Open Space (RT1)
- ☆☆☆ Special Policy Area (BAR/2)
- Olympia Park Mixed Strategic Development Site (CP2A)

