
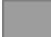



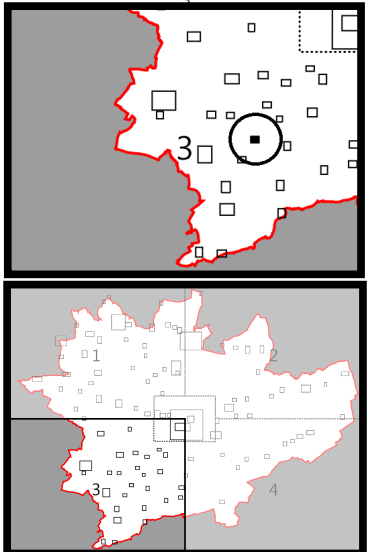




Click on the layers listed in the Key to switch on or off

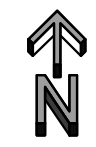
Click here to switch all layers on
 Click here to switch all layers off

- Key**
-  Ryedale Local Plan Boundary
 -  Area Outside of Ryedale Local Plan
 -  Development Limits (SP1)
 -  Conservation Area (SP12)
 -  Visually Important Undeveloped Area (SP16) (SD16)



Barton-le-Willows

Ryedale Plan
Policies Map



© Crown Copyright
and database right 2018.
Ordnance Survey 100019406



Scale: 1:2500 @A3