

Selby District Council

Core Strategy Local Plan  
Policies Maps

October 2013  
(Updated February 2014)



## Replacement Policies Maps

### **Olympia Park Mixed Use Strategic Development Site**

#### **Policy SP7 (formally referred to as CP2A)**

#### **Selby District Local Plan Adopted Inset Map No. 4 (Barlby Bridge):**

Policy SP7 (formally referred to as CP2A) – new Olympia Park Mixed Use Strategic Development Site replaces Policies BAR/1 and BAR/1A (Employment Allocations) and amends the boundary of the Special Policy Area BAR/2 – Transshipment Facilities in the in the Selby District Local Plan (SDLP). The Development Limits of Barlby Bridge are also amended to encompass the Strategic Development Site.

### **New Green Belt Policy**

#### **Policy SP3 (formally referred to as CPXX)**

#### **Affects various Inset Maps of the Policies Maps:**

New Policy SP3 (formally CPXX during the EIP) replaces Policies GB1, GB2, GB3 and GB4 of the Selby District Local Plan (SDLP).

The replacement policy does not include 'Major Developed Sites' (MDS), and consequentially the Adoption of the Core Strategy Green Belt policy amends the Policies Map.

The table below identifies which of the Selby District Local Plan (SDLP) – Inset Maps are affected:

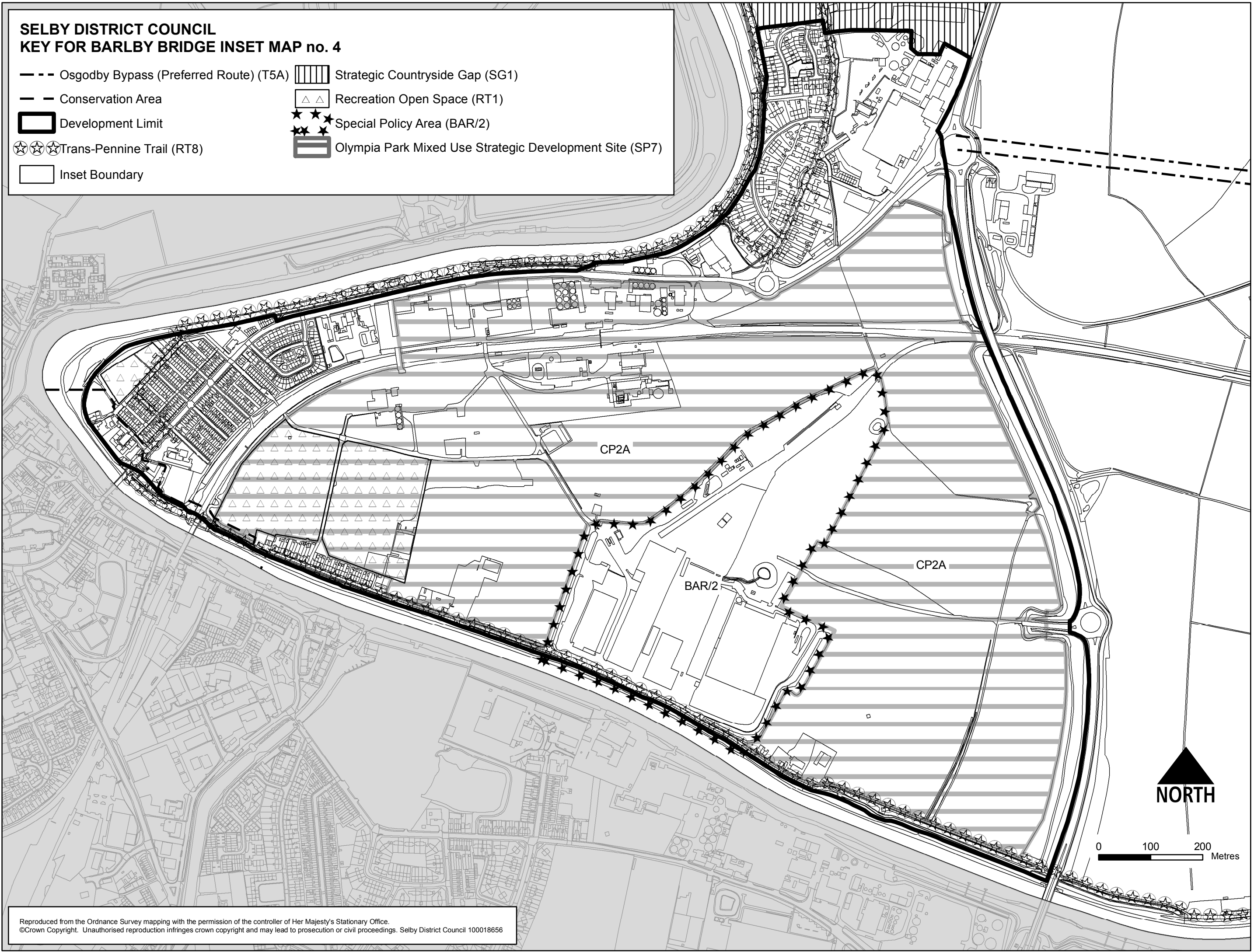
<b>Major Developed Sites (MDS) in the Green Belt</b>	<b>SDLP Inset map no.</b>	<b>Change</b>
Bilbrough Top (roadside services)	8A	MDS notation removed
Byram-cum-Sutton Sewage Treatment Works	12A	
Triesse Vulcan Works, Church Fenton	20	
Papyrus Works, Newton Kyme	46A	
Former Bacon Factory Site, Sherburn In Elmet	54	
Tadcaster Grammar School	60A	

The replacement Policies Maps are attached below, and replace SDLP Inset Maps:

- Inset Map No. 4 - Barlby Bridge
- Inset Map No. 8A - Bilbrough Top
- Inset Map No. 12A - Byram-cum-Sutton Sewage Treatment Works
- Inset Map No. 20 - Church Fenton - West
- Inset Map No. 46A - Papyrus Works, Newton Kyme
- Inset Map No. 54 - Sherburn In Elmet
- Inset Map No. 60A - Tadcaster Grammar School

**SELBY DISTRICT COUNCIL  
KEY FOR BARLBY BRIDGE INSET MAP no. 4**

- Osgodby Bypass (Preferred Route) (T5A)
- - - Conservation Area
- ▭ Development Limit
- ☆☆☆ Trans-Pennine Trail (RT8)
- ▭ Inset Boundary
- ▨ Strategic Countryside Gap (SG1)
- △△ Recreation Open Space (RT1)
- ☆☆☆ Special Policy Area (BAR/2)
- ▨ Olympia Park Mixed Use Strategic Development Site (SP7)



**BARLBY BRIDGE**

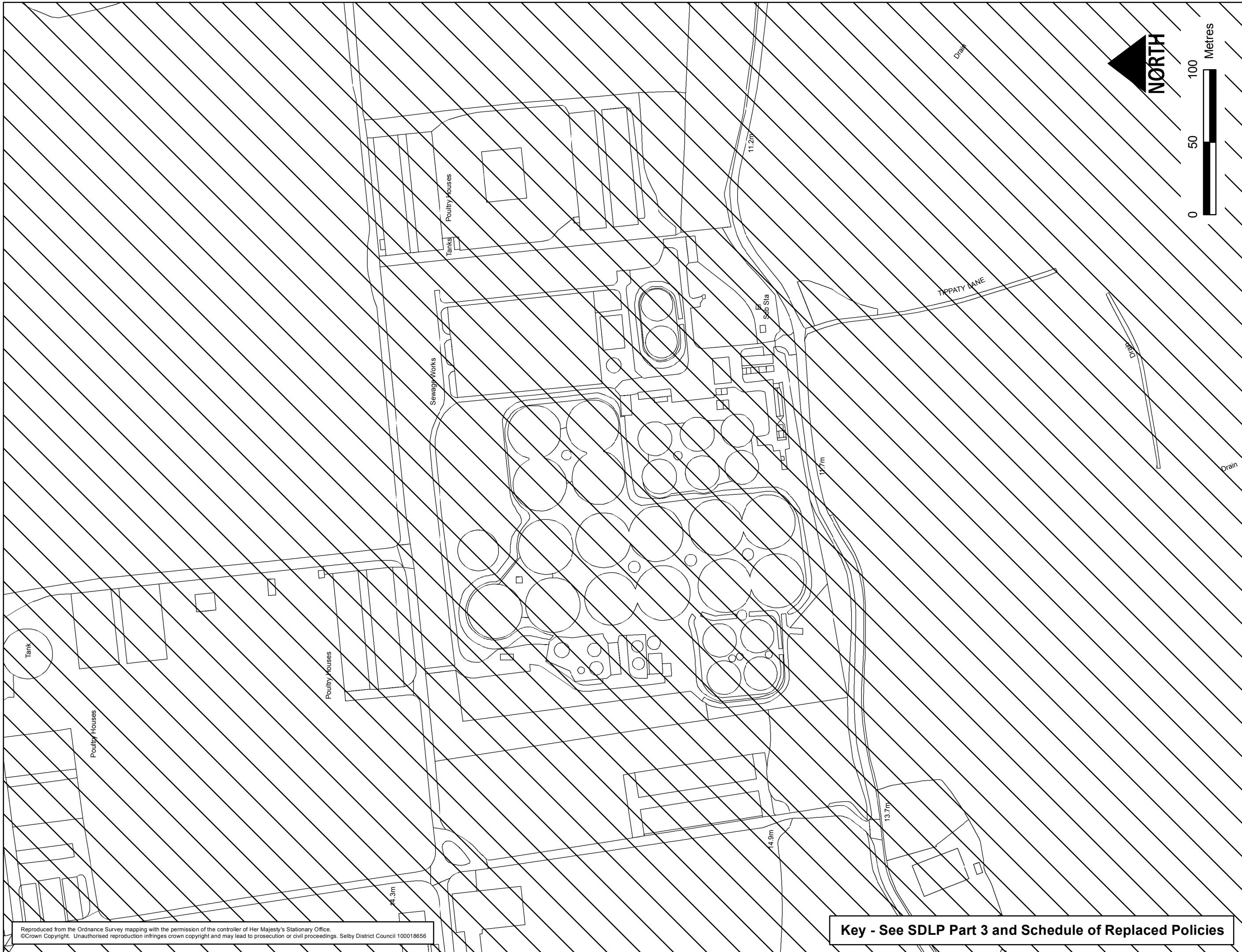


# BILBROUGH TOP

## 8A

Reproduced from the Ordnance Survey mapping with the permission of the controller of Her Majesty's Stationary Office.  
 ©Crown Copyright. Unauthorised reproduction infringes crown copyright and may lead to prosecution or civil proceedings. Selby District Council 100018656

**Key - See SDLP Part 3 and Schedule of Replaced Policies**

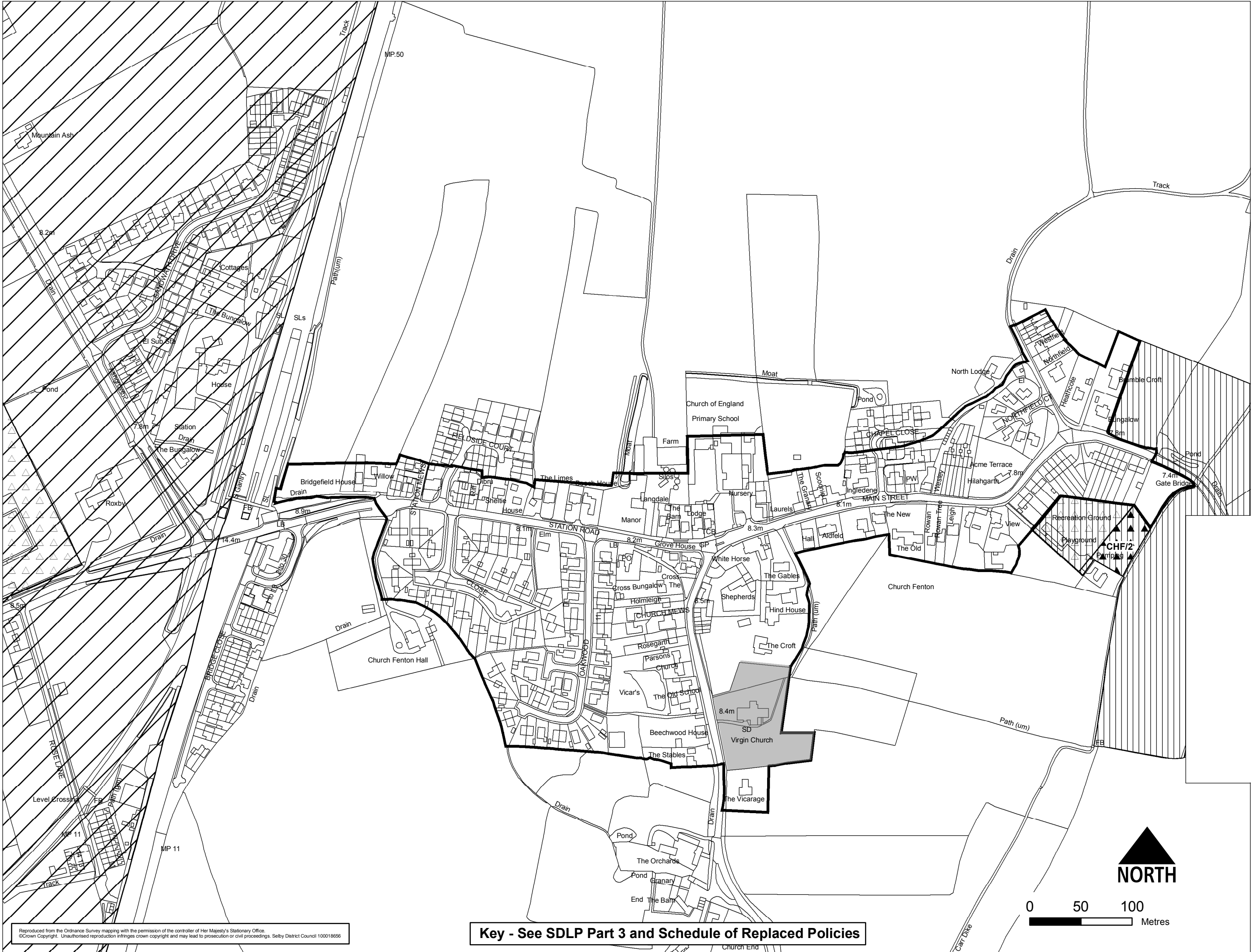


Reproduced from the Ordnance Survey mapping with the permission of the controller of Her Majesty's Stationary Office.  
 ©Crown Copyright. Unauthorised reproduction infringes crown copyright and may lead to prosecution or civil proceedings. Selby District Council 100018656

**Key - See SDLP Part 3 and Schedule of Replaced Policies**

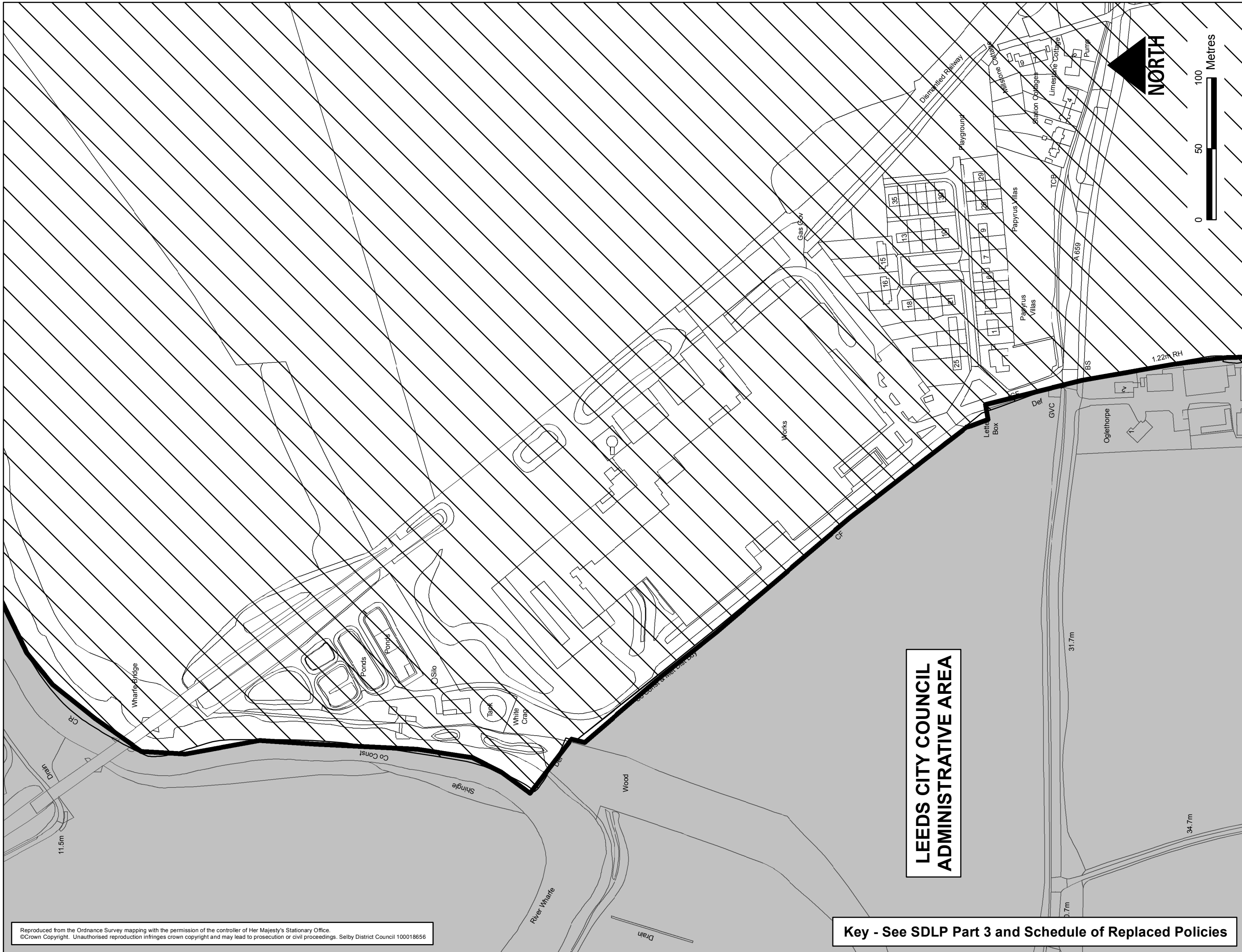
**BYRAM-CUM-SUTTON SEWAGE TREATMENT WORKS**

# CHURCH FENTON - WEST



Reproduced from the Ordnance Survey mapping with the permission of the controller of Her Majesty's Stationary Office.  
© Crown Copyright. Unauthorised reproduction infringes crown copyright and may lead to prosecution or civil proceedings. Selby District Council 100018656

Key - See SDLP Part 3 and Schedule of Replaced Policies



# PAPYRUS WORKS, NEWTON KYME

## 46A

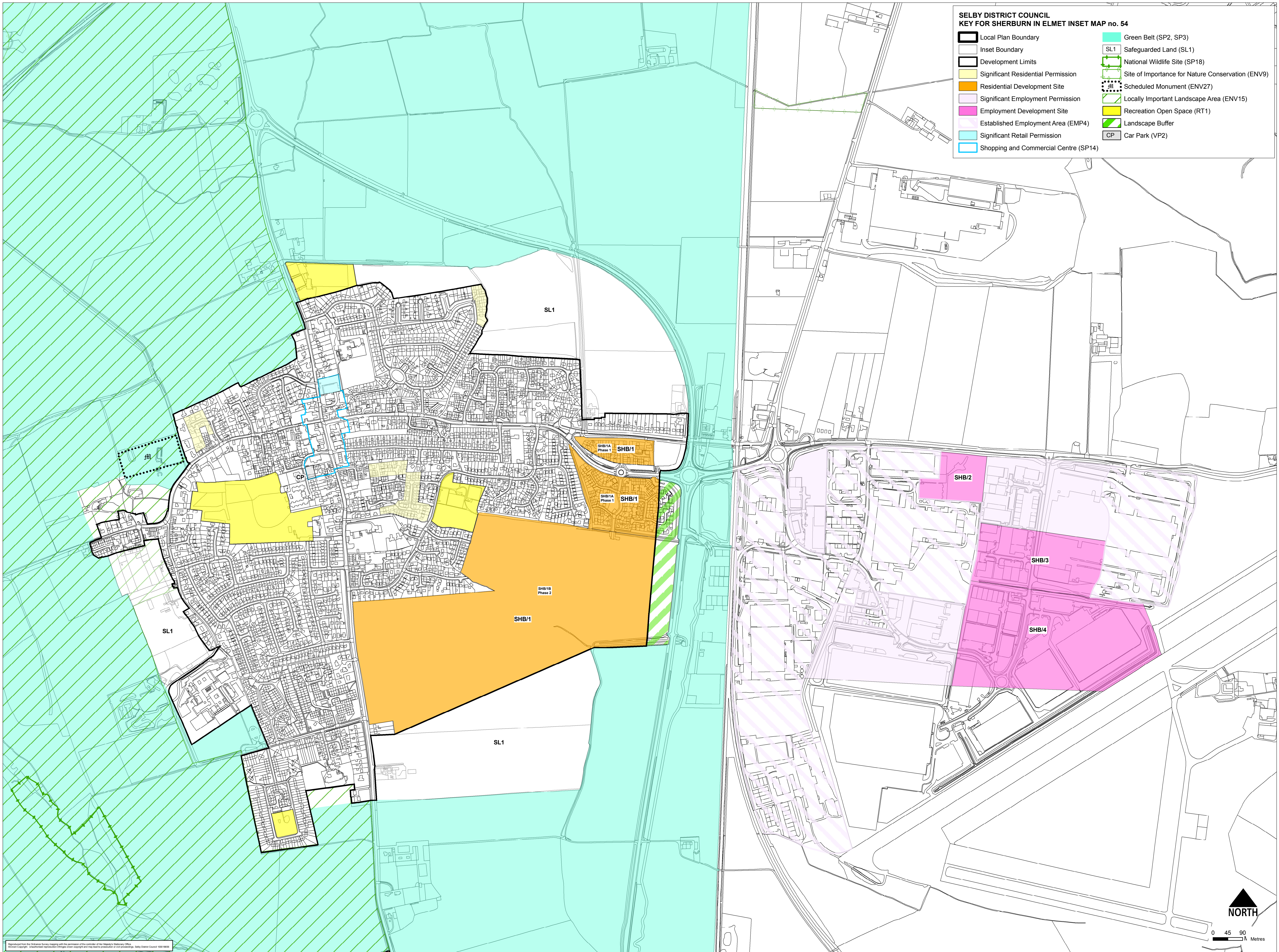
**LEEDS CITY COUNCIL  
ADMINISTRATIVE AREA**

**Key - See SDLP Part 3 and Schedule of Replaced Policies**

Reproduced from the Ordnance Survey mapping with the permission of the controller of Her Majesty's Stationary Office.  
©Crown Copyright. Unauthorised reproduction infringes crown copyright and may lead to prosecution or civil proceedings. Selby District Council 100018656

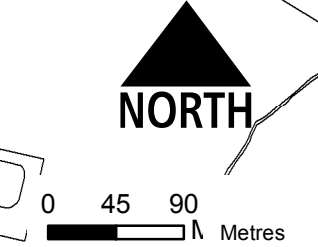
**SELBY DISTRICT COUNCIL  
 KEY FOR SHERBURN IN ELMET INSET MAP no. 54**

	Local Plan Boundary		Green Belt (SP2, SP3)
	Inset Boundary		Safeguarded Land (SL1)
	Development Limits		National Wildlife Site (SP18)
	Significant Residential Permission		Site of Importance for Nature Conservation (ENV9)
	Residential Development Site		Scheduled Monument (ENV27)
	Significant Employment Permission		Locally Important Landscape Area (ENV15)
	Employment Development Site		Recreation Open Space (RT1)
	Established Employment Area (EMP4)		Landscape Buffer
	Significant Retail Permission		Car Park (VP2)
	Shopping and Commercial Centre (SP14)		

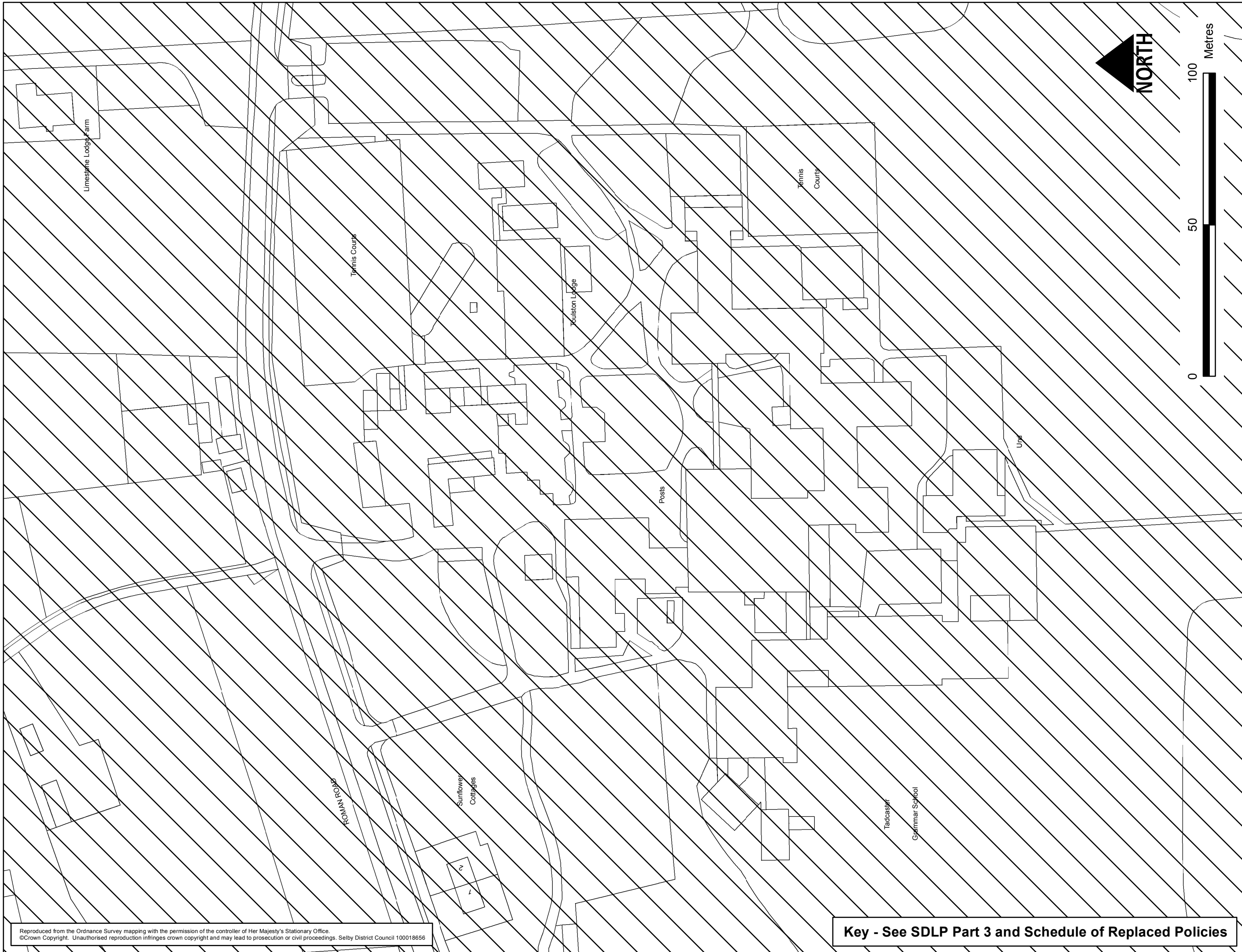


# SHERBURN IN ELMET

Reproduced from the Ordnance Survey mapping with the permission of the Controller of Her Majesty's Stationery Office. © Crown Copyright. Unauthorised reproduction infringes crown copyright and may lead to prosecution or civil proceedings. Selby District Council 10001804







# TADCASTER GRAMMAR SCHOOL

## 60A