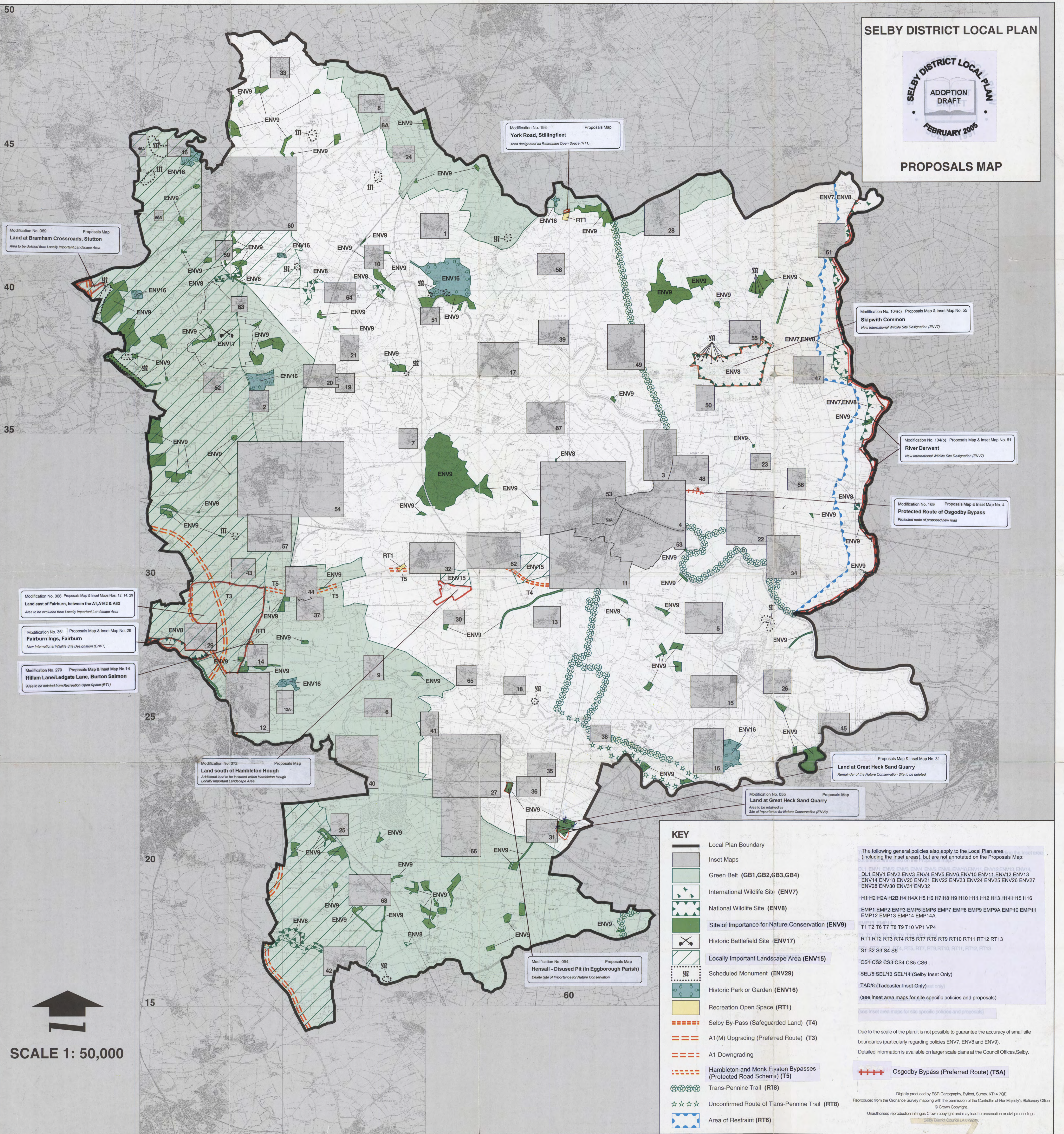




PROPOSALS MAP



50
45
40
35
30
25
20
15

Modification No. 193
Proposals Map
York Road, Stillingfleet
Area designated as Recreation Open Space (RT1)

Modification No. 069
Proposals Map
Land at Bramham Crossroads, Stutton
Area to be deleted from Locally Important Landscape Area

Modification No. 104(c)
Proposals Map & Inset Map No. 55
Skipwith Common
New International Wildlife Site Designation (ENV7)

Modification No. 104(b)
Proposals Map & Inset Map No. 61
River Derwent
New International Wildlife Site Designation (ENV7)

Modification No. 169
Proposals Map & Inset Map No. 4
Protected Route of Osgodby Bypass
Protected route of proposed new road

Modification No. 066
Proposals Map & Inset Maps Nos. 12, 14, 29
Land east of Fairburn, between the A1, A162 & A63
Area to be excluded from Locally Important Landscape Area

Modification No. 361
Proposals Map & Inset Map No. 29
Fairburn Ings, Fairburn
New International Wildlife Site Designation (ENV7)

Modification No. 279
Proposals Map & Inset Map No. 14
Hillam Lane/Ledgate Lane, Burton Salmon
Area to be deleted from Recreation Open Space (RT1)

Modification No. 072
Proposals Map
Land south of Hambleton Hough
Additional land to be included within Hambleton Hough Locally Important Landscape Area

Proposals Map & Inset Map No. 31
Land at Great Heck Sand Quarry
Remainder of the Nature Conservation Site to be deleted

Modification No. 055
Proposals Map
Land at Great Heck Sand Quarry
Area to be retained as Site of Importance for Nature Conservation (ENV9)

Modification No. 054
Proposals Map
Hensall - Disused Pit (In Eggborough Parish)
Delete Site of Importance for Nature Conservation

- KEY**
- Local Plan Boundary
 - Inset Maps
 - Green Belt (GB1,GB2,GB3,GB4)
 - International Wildlife Site (ENV7)
 - National Wildlife Site (ENV8)
 - Site of Importance for Nature Conservation (ENV9)
 - Historic Battlefield Site (ENV17)
 - Locally Important Landscape Area (ENV15)
 - Scheduled Monument (ENV29)
 - Historic Park or Garden (ENV16)
 - Recreation Open Space (RT1)
 - Selby By-Pass (Safeguarded Land) (T4)
 - A1(M) Upgrading (Preferred Route) (T3)
 - A1 Downgrading
 - Hambleton and Monk Fyston Bypasses (Protected Road Scheme) (T5)
 - Trans-Pennine Trail (RT8)
 - Unconfirmed Route of Trans-Pennine Trail (RT8)
 - Area of Restraint (RT6)

The following general policies also apply to the Local Plan area (including the Inset areas), but are not annotated on the Proposals Map:

- DL1 ENV1 ENV2 ENV3 ENV4 ENV5 ENV6 ENV10 ENV11 ENV12 ENV13 ENV14 ENV18 ENV20 ENV21 ENV22 ENV23 ENV24 ENV25 ENV26 ENV27 ENV28 ENV30 ENV31 ENV32
 - H1 H2 H2A H2B H4 H4A H5 H6 H7 H8 H9 H10 H11 H12 H13 H14 H15 H16
 - EMP1 EMP2 EMP3 EMP5 EMP6 EMP7 EMP8 EMP9 EMP9A EMP10 EMP11 EMP12 EMP13 EMP14 EMP14A
 - T1 T2 T6 T7 T8 T9 T10 VP1 VP4
 - RT1 RT2 RT3 RT4 RT5 RT7 RT8 RT9 RT10 RT11 RT12 RT13
 - S1 S2 S3 S4 S5
 - CS1 CS2 CS3 CS4 CS5 CS6
 - SEL5 SEL13 SEL14 (Selby Inset Only)
 - TAD/8 (Tadcaster Inset Only)
- (see Inset area maps for site specific policies and proposals)

Due to the scale of the plan, it is not possible to guarantee the accuracy of small site boundaries (particularly regarding policies ENV7, ENV8 and ENV9). Detailed information is available on larger scale plans at the Council Offices, Selby.

Osgodby Bypass (Preferred Route) (T5A)

SCALE 1: 50,000

45 50 55 60