

AREA 10

Approved
Feb 2004

A Low Bishopside.

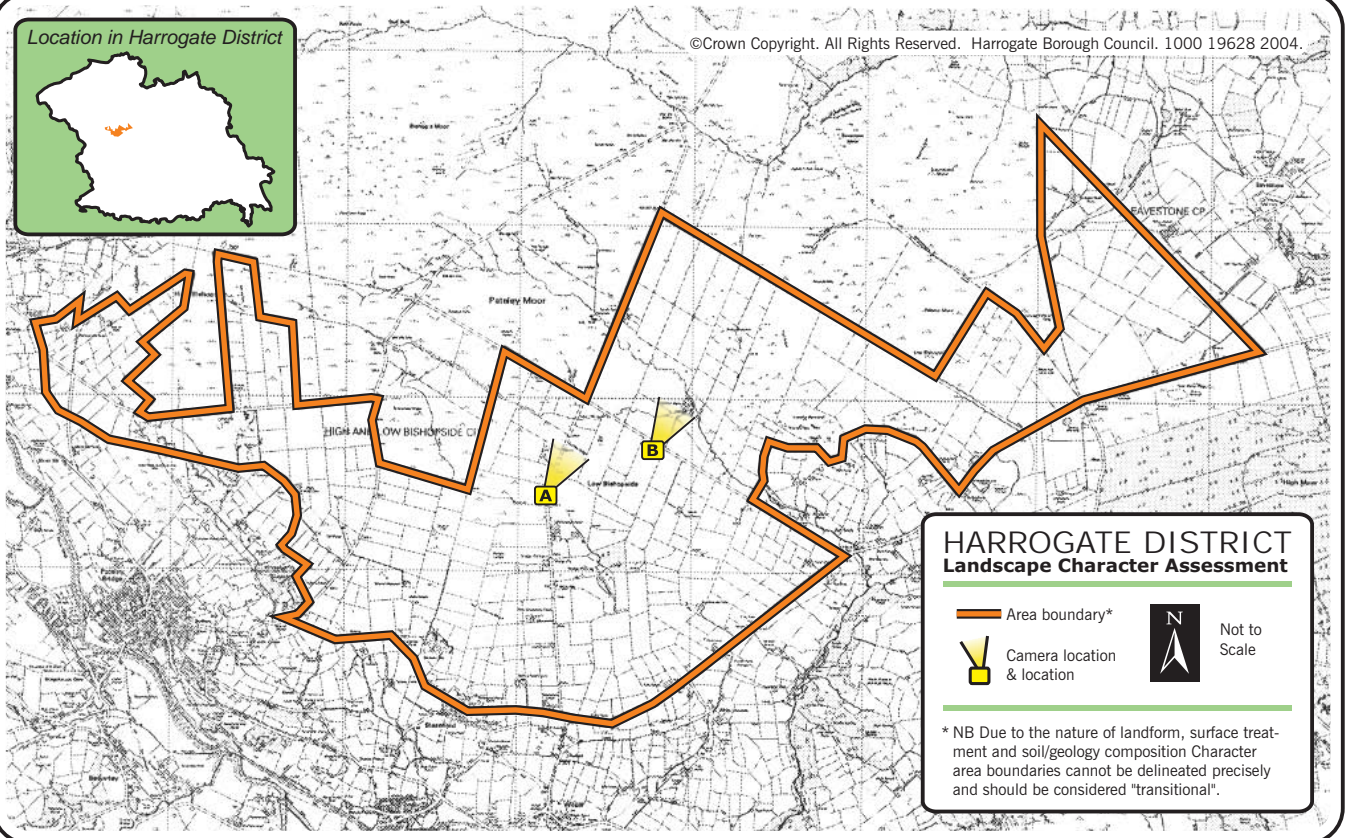


Bishopside Upland Fringe Grassland



Location in Harrogate District



©Crown Copyright. All Rights Reserved. Harrogate Borough Council. 1000 19628 2004.



HARROGATE DISTRICT Landscape Character Assessment

-  Area boundary*
-  Camera location & location



Not to
Scale

* NB Due to the nature of landform, surface treatment and soil/geology composition Character area boundaries cannot be delineated precisely and should be considered "transitional".



Description

This is a large-scale area on the upland fringe marking the transition between moorland to the north and the Nidd valley to the south. The area covers more than 8km² and extends from the edge of Pateley and Eavestone Moor to the B6265 Pateley to Ripon Road. Improved and semi-improved grass fields are rectilinear medium to large parliamentary enclosures with stonewall boundaries creating a regular, organised pattern across the gently undulating landform. Straight minor roads and public footpaths conform to the field pattern. Several small becks cross the area in a generally south easterly direction, giving rise to the gently undulating landform. This is an open and exposed landscape with a uniform appearance.




There are a few dispersed farmsteads in this remote area. Views are extensive. The area is tended and harmonious, the main detractors being modern farm buildings. This is a stunning and attractive Character Area within the Nidderdale Area of Outstanding Natural Beauty.

Key Characteristics



Geology, soils and drainage

-  Solid geology of Millstone grit.
-  Slowly-permeable, seasonally-waterlogged, fine loamy over clayey soils with patches of well-drained coarse loamy soils over rock.

Landform and drainage pattern

-  Landform is gently sloping down to the south and east from 300m to 250m AOD.
-  Rock outcrops are scattered throughout, particularly at the moorland edge.
-  Small becks cross the area and there are several springs.

Land use, fields, boundaries, trees and wildlife

-  Land use is generally medium to large semi-improved grass fields becoming increasingly improved at lower elevations, bounded by drystone walls.
-  Field pattern is of rectilinear Parliamentary-type enclosure.

Key Characteristics (Cont'd)

- There are no significant woodland blocks in the area with a few small blocks and clumps of woodland associated with farmsteads and field corners.

Settlement, built environment and communications

- There are several scattered farmsteads with some modern farm buildings, but no settlements in the area.
- Traditional building materials are local gritstone with stone slate roofs
- Several disused quarries and pits probably supplied stone for the walls and farmsteads when the area was enclosed.

Sensitivities & Pressures

- The open and large scale of this area has resulted in a landscape that is sensitive to development and tree planting which does not respect landscape pattern and texture.
- Large conifer plantations would detract from the character of native woodlands in the Nidd valley area. Forestry is not currently commercially viable, but there may be pressure in the future for more planting.
- Neglect of stone walls will result in the landscape taking on a less well-managed appearance.
- The open and exposed appearance of the landscape makes it inherently sensitive to change.

Guidelines

Aim: To maintain the openness and characteristic patterns of the landscape

- The regular field pattern, and the views of it are important to the distinctiveness of this area. Encourage the maintenance and repair of dry stone wall field boundaries.
- Encourage tree management that respects local character and the introduction of native species to existing plantations.
- Where additional conifer plantations are required their design must take account of landform. Plantations should be of appropriate scale, avoid stark edges and skyline locations.
- Discourage inappropriate development and ensure that new development relates to existing settlement pattern i.e. the existing farmsteads.

Aim: To enhance the diversity of land cover and habitats at the moorland edge.

- Promote the creation and improvement of diverse grassland habitats at the moorland edge in line with the aims of the Harrogate District Biodiversity Action Plan.
- Maintain the dry stone wall boundary with open moorland which are distinctive features.



B Low Bishopside.