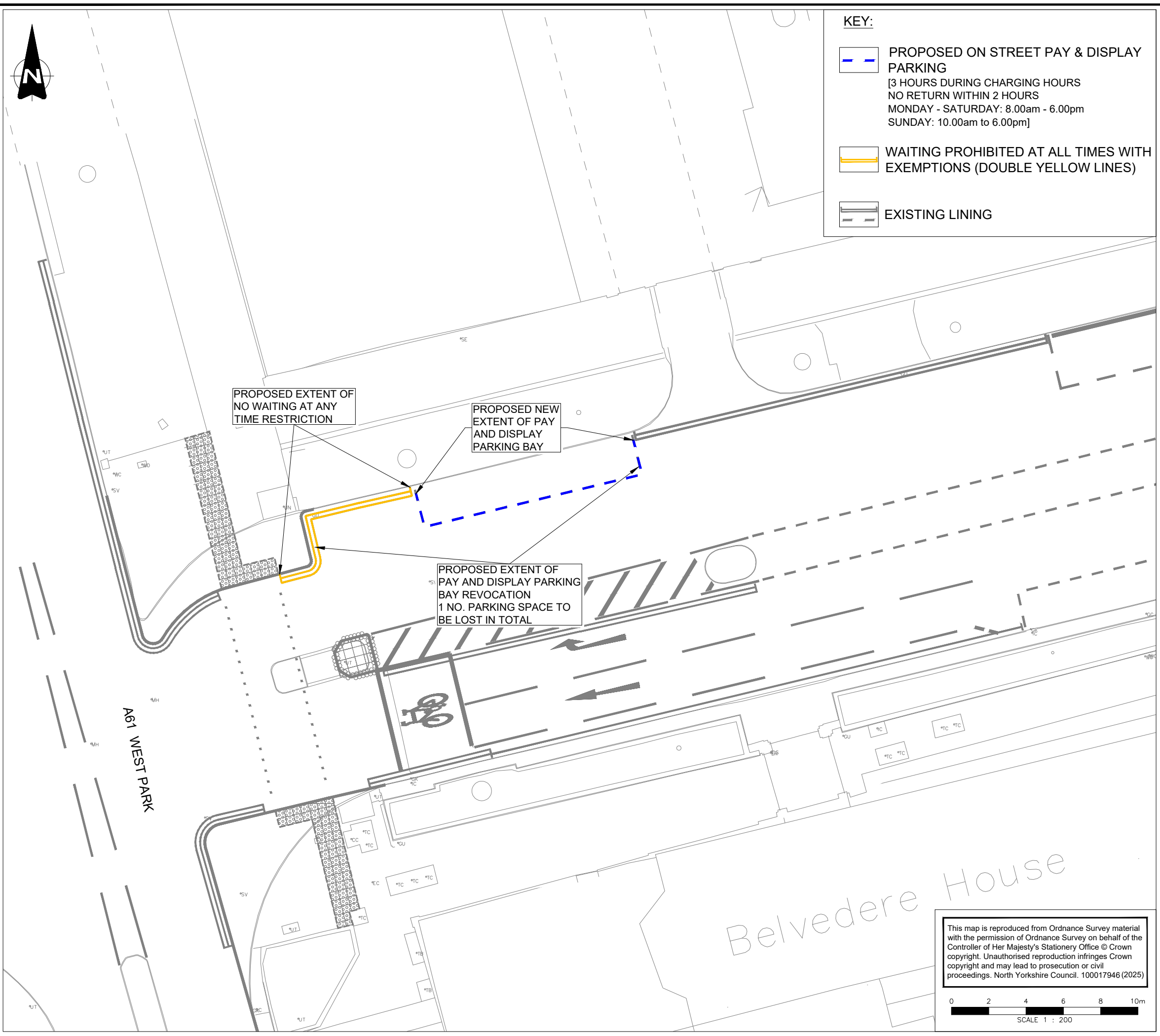





File name \\UK.WSP\GROUP\COM\CENTRAL DATA\PROJECTS\70112349 - HEDC20 - HARROGATE ATF VICTORIA AVENUE\12349 - WIP\HIGHWAYS\TROI\REDUCING PARKING BAY TO ACCOMMODATE BUILD OUT\70112349-WSP-TRO-XXX-DR-CH-006 REDUCING PARKING BAY LENGTH.DWG, printed on 09 January 2025 15:15:49, by Walker, Abbey



**KEY:**

-  **PROPOSED ON STREET PAY & DISPLAY PARKING**  
 [3 HOURS DURING CHARGING HOURS  
 NO RETURN WITHIN 2 HOURS  
 MONDAY - SATURDAY: 8.00am - 6.00pm  
 SUNDAY: 10.00am to 6.00pm]
-  **WAITING PROHIBITED AT ALL TIMES WITH EXEMPTIONS (DOUBLE YELLOW LINES)**
-  **EXISTING LINING**

**DO NOT SCALE**

- NOTES:**
1. THIS DRAWING IS NOT TO BE USED FOR CONSTRUCTION.
  2. ALL RESTRICTIONS WHICH ARE NOT HIGHLIGHTED OR THOSE THAT ARE ON ADJACENT STREETS ARE UNAFFECTED BY THESE PROPOSALS.
  3. THIS DRAWING SHOULD BE READ IN CONJUNCTION WITH THE STATEMENT OF REASONS FOR THE PROPOSED ORDER.

P01	03/01/2025	AW	FIRST ISSUE	JB	DM
REV	DATE	BY	DESCRIPTION	CHK	APP

DRAWING STATUS: **S2 - FOR INFORMATION**



Dale House, Mount View, Standard Way, Northallerton  
DL6 2YD, UK  
wsp.com

CLIENT: 

PROJECT: **VICTORIA AVENUE  
ACTIVE TRAVEL FUND**

TITLE: **PAY AND DISPLAY PARKING BAYS &  
NO WAITING AT ANY TIME  
TRAFFIC REGULATION ORDERS (TRO)**

SCALE @ A3: 1:200	CHECKED: JB	APPROVED: DM
----------------------	----------------	-----------------

PROJECT No: 70112349	DESIGNED: AW	DRAWN: AW	DATE: 03/01/2025
-------------------------	-----------------	--------------	---------------------

DRAWING No: <b>70112349-WSP-TRO-XXX-DR-CH-006</b>	REV: <b>P01</b>
--	--------------------

This map is reproduced from Ordnance Survey material with the permission of Ordnance Survey on behalf of the Controller of Her Majesty's Stationery Office © Crown copyright. Unauthorised reproduction infringes Crown copyright and may lead to prosecution or civil proceedings. North Yorkshire Council. 100017946 (2025)

0 2 4 6 8 10m  
SCALE 1 : 200

© WSP UK Ltd