

HARROGATE DISTRICT SITES & POLICIES DPD

Sport, Recreation, Open Space and Village Halls Study: Part 1 - Standards Assessment

September 2011

PLANNING DIVISION

Department of Development Services, Knapping Mount, West Grove Road, Harrogate HG1 2AE
www.harrogate.gov.uk/planning

Harrogate
BOROUGH COUNCIL

Working for you

CONTENTS:

Introduction	Page 1
Policy Context	Page 3
Methodology	Page 6
Consultation	Page 11
Outcome	Page 13
<u>Group A Towns</u>	
○ Harrogate	Page 13
○ Knaresborough	Page 14
○ Ripon	Page 15
<u>Group B Towns</u>	
○ Boroughbridge	Page16
○ Masham	Page16
○ Pateley Bridge	Page16
<u>Group B Villages</u>	
○ Birstwith	Page17
○ Burton Leonard	Page17
○ Darley & Dacre	Page18
○ Follifoot	Page18
○ Great Ouseburn	Page19
○ Green Hammerton	Page19
○ Hampsthwaite	Page19
○ Killinghall	Page 20
○ Kirkby Malzeard	Page 20
○ Marton cum Grafton	Page 20
○ Pannal	Page 21
○ Ripley	Page 21
○ Spofforth	Page 22
○ Summerbridge & Dacre Banks	Page 22
○ Tockwith	Page 22
<u>Group C Villages</u>	
○ Aldborough	Page 23
○ Askwith	Page 23
○ Beckwithshaw	Page 23
○ Bishop Monkton	Page 24
○ Bishop Thornton	Page 24
○ Burnt Yates	Page 25
○ Cundall	Page 25
○ Dishforth	Page 25
○ Glasshouses	Page 26
○ Goldsborough	Page 26

○ Grantley	Page 27
○ Grewelthorpe	Page 27
○ Kirby Hill	Page 27
○ Kirk Deighton	Page 28
○ Kirk Hammerton	Page 28
○ Kirkby Overblow	Page 28
○ Little Ouseburn	Page 29
○ Lofthouse	Page 29
○ Long Marston	Page 29
○ Markington	Page 30
○ Melmerby & Wath	Page 30
○ North Stainley	Page 31
○ Rainton	Page 31
○ Ramsgill	Page 31
○ Roecliffe	Page 32
○ Sawley	Page 32
○ Scotton	Page 32
○ Sharow	Page 33
○ Sicklinghall	Page 33
○ Skelton on Ure	Page 34
○ Staveley	Page 34
○ Whixley	Page 34

Next Steps

Page 36

APPENDICES:

Appendix 1: Settlement Grid Map (4 km sq and 36 km sq Grids)

Appendix 2: ANGSt Overlap with 36 km sq Grid

Appendix 3: Sport, Recreation and Open Space Requirements (4 km sq Grid)

Appendix 4: Sport, Recreation and Open Space Requirements (36 km sq Grid)

Appendix 5: Village Hall Requirements (36 km sq Grid)

Appendix 6: Community Access to School Sports Facilities

1.0 INTRODUCTION

- 1.1 The Council is currently preparing a Development Plan Document (DPD) that will allocate sites for a variety of land uses (including housing and employment land) and contain planning policies to manage development throughout the District up to 2023/2024. This document is to be called the Sites & Policies DPD.
- 1.2 This report forms part of the evidence base for the emerging Sites & Policies DPD and is the first part of a wider study to determine the need to allocate land for new sports, recreation, open space and village hall facilities in the District. Access to a sufficient range of open space and village hall facilities is important to the continued health, wellbeing and vitality of communities, offering areas for exercise, recreation, relaxation and as meeting places.

Sport, Recreation and Open Space

- 1.3 Open spaces are vital to the protection of the environment, providing habitats to sustain a variety of flora and fauna within settlements, and as an educational and recreational resource. Well planned public open spaces are also important to the design and setting of the built environment and to the overall character and quality of an area. Sport, recreation and open space provision in Harrogate District incorporates a wide range of land uses including informal parkland, formal parks and gardens, allotments, playing pitches, cemeteries, wooded areas and children's playgrounds. Through the adoption of local planning policies in successive development plans Harrogate Borough Council has been proactive in seeking to protect existing sport, recreation and open spaces and to ensure that development contributes towards the provision of new, or the enhancement of existing, facilities in support of settlement growth. The Council has also allocated land within development plans where there has been a requirement for new facilities to support the needs of existing residents and in response to new demand placed on facilities by development.

Village Halls

- 1.4 Village Halls often perform an important role in village life bringing the community together and providing facilities for a wide range of social, recreational and community activities. There are a number of village halls across the District, including church halls, converted barns and modern purpose built spaces. Despite these differences in age and design, village halls have a number of common components and functions, the most obvious of which is the provision of a multi-purpose space that can be used for meetings, social events, classes, children's groups, sports and/or recreational activities.

Purpose of This Report

- 1.5 This report forms the first part in a wider study into the requirements and opportunities for providing new sports, recreation, open space and village hall facilities within the District over the life of the Sites & Policies DPD up to 2023/2024. The purpose of this report is to:
- Identify existing quantitative deficiencies and surpluses in sport, recreation and open space facilities and village hall provision across the districts main settlements, based on the District's local quantity standards; and

- Highlight settlements where additional work needs to be undertaken to identify potential sites for new open space and village hall provision, with a view to allocating suitable and available land within the emerging Sites & Policies DPD.

- 1.6 The report is being published for consultation between 9 September and 4 November 2011 as part of the Urban Areas Consultation¹ on the Sites and Policies DPD. The Council are inviting the views of Parish Councils, residents, schools and other interested parties on the outcomes of this report in order to determine the level of need for new facilities within individual communities and identify potential sites to deliver them. Please send comments to:

FREEPOST HG11
Department of Development Services
Harrogate Borough Council
West Grove Road
Harrogate
HG1 2ZR
(no stamp needed)

LDF@harrogate.gov.uk

- 1.7 Part two of the study is being published at the same time and sets out work in progress on the need and options for additional outdoor sports facilities in Harrogate, Knaresborough and Ripon².

¹ Details of the Urban Areas Consultation can be found on the Council's website at the following website address: www.harrogate.gov.uk/ldfconsult

² Sports, Recreation, Open Space and Village Hall Study: Part 2 - Outdoor sports facilities in Harrogate, Knaresborough and Ripon is available to view at the website address provided in footnote 1 above.

2.0 POLICY CONTEXT

National Planning Policy³

- 2.1 Planning Policy Statement 1: Delivering sustainable development (PPS1) sets out the Government's policies on the delivery of sustainable development through the planning system. PPS1 states that development plans should promote development that creates inclusive communities through, amongst other measures:
- Addressing accessibility for all members of the community to leisure and community facilities.
 - Taking into account the needs of all the community.
 - Delivering safe, healthy and attractive places to live.
 - Supporting the promotion of health and wellbeing by making provision for physical activity.
- 2.2 PPS1 also provides that planning authorities should seek to maintain and improve the local environment through positive policies on issues such as design, conservation and the provision of public space. It goes on to state that development plans should take account of the need to improve the built and natural environment in and around urban areas and rural settings, including the provision of good quality open space.
- 2.3 Planning Policy Guidance 17: Planning for open space, sport and recreation (PPG17) provides that local authorities should undertake assessments of the existing and future needs of local communities for open space, sport and recreational facilities, along with audits of the quantity and quality of existing provision.
- 2.4 PPG17 also encourages local authorities to set local quantitative, qualitative and accessibility standards for open space provision based on an assessment of local need. The Council adopted the Provision for Open Space Supplementary Planning Document (SPD) in June 2006 (revised in October 2010). The SPD sets out the District's local standards for open space provision in connection with new housing development. There are seven types of open space identified by the SPD each with their own vision and minimum size standard (both quality standards), distance threshold (accessibility standard) and quantity standard (expressed as Ha per 1000 population). These local standards form the basis for assessing existing open space provision in the District and guide the need, level and location of future provision.
- 2.5 In identifying appropriate locations for new open spaces, PPG17 sets out several general principles that should be followed including: promoting accessibility; avoiding loss of residential amenity; using brownfield sites (previously developed areas of land) in preference to greenfield locations; and, considering security and personal safety when selecting sites.
- 2.6 Policy EC4: Planning for Consumer Choice and Promoting Competitive Town Centres of Planning Policy Statement 4: Planning for Sustainable Economic

³ National Planning Policy can be viewed on the Department for Communities and Local Government website at the following address:
www.communities.gov.uk/planningandbuilding/planningsystem/planningpolicy/

Growth (PPS4) provides that local authorities should support services, including village halls, in local centres and villages.

- 2.7 The Government published a Draft National Planning Policy Framework for consultation in July 2011. It is the Government's intention that this framework will eventually replace existing national policy and guidance contained in Planning Policy Guidance Notes, Planning Policy Statements, and planning circulars. The draft framework states that the purpose of the planning system is to contribute towards the achievement of sustainable development. One of the ways in which planning can achieve this aim is by promoting accessible local services (including community facilities and open spaces) that reflect the community's needs and supports its health and well being. With regards to open space, the Draft National Planning Policy Framework provides that local authorities planning policies should identify specific needs and quantitative and qualitative deficits or surpluses of open space, sports and recreational facilities in the local area.

Regional Spatial Strategy

- 2.8 The Yorkshire and Humber Plan the Regional Spatial Strategy (RSS) for the region was published in May 2008. The RSS contains a number of policies that are relevant to the provision of open space, in particular policies ENV11: Health, Recreation and Sport and ENV6: Forestry, Trees and Woodlands. Policy ENV11 provides that local authority plans and strategies should help to improve the health of residents by providing, safeguarding and enhancing high quality facilities for sports and recreation. Policy ENV6 states that local authority plans and strategies should seek to improve public access to and within woodlands in or near towns. In addition to these policies Policy YH8: Green Infrastructure provides that Local Development Frameworks should identify and require the retention of substantial connected networks of green infrastructure, particularly in urban, urban fringe and adjacent countryside areas. Green infrastructure is a term used to encompass a wide range of accessible green and natural spaces (including playing fields, parks, woodland, informal open spaces, nature reserves, river corridors etc).

Harrogate District Core Strategy

- 2.9 The Harrogate District Core Strategy⁴ was adopted by the Council on 11 February 2009 following an examination in public. The Core Strategy provides a strategic policy framework for the development and conservation of the District up to 2021 and beyond. Core Strategy Policy C1: Inclusive Communities seeks to address community needs through new development, including the provision of open space and meeting halls, and focuses upon the particular needs of elderly people, young people, rural populations and disabled people.
- 2.10 As part of the consultation on the Sites & Policies DPD taking place during September-November 2011, the Council are proposing the inclusion of a local planning policy within the DPD dealing with the provision of new open space, sport and recreation facilities in the District⁵. Subject to the outcome of this study, the policy will allocate sites to respond to the need for new open space provision over the plan period to 2023/2024. This policy also contains a number of criteria against which planning applications for new sports, recreation and open space that arise

⁴ The Harrogate District Core Strategy can be found on the Council's website at the following address: www.harrogate.gov.uk/harrogate-3161

⁵ Draft Policy C4: New Sports, Open Space and Recreation Development, along with other draft planning policies proposed as part of the emerging Sites & Policies DPD, can be viewed on the Council's website at the following address: www.harrogate.gov.uk/ldfconsult

over the course of the plan period will be considered. This evidence base report forms the first stage in identifying the need for new open space provision within a number of settlements across the District. It is intended to act as a basis for engaging with parish council's, residents, schools and other interested parties to determine what is required to service the needs of communities and whether there are any site opportunities that should be explored further as part of the site allocation process.

3.0 METHODOLOGY

3.1 This report seeks to establish how existing sports, recreation, open space and village halls provision in the District compares against local quantity standards for open space and village halls provision. The Council adopted two Supplementary Planning Documents (SPD) in June 2006 (revised in October 2010) to outline the Council's approach to collecting developer contributions towards the provision and enhancement of open spaces and village halls in connection with new housing development. The SPDs include quantity standards for open space and village halls based on evidence gathered during the development of the SPD of areas in the District where residents were satisfied with the level of open space and village halls provision. The SPDs also include distance thresholds based on how far people were prepared to travel on average to access open space and village hall facilities along with minimum size standards for new facilities below which it would either be unsuitable or unfeasible to deliver new facilities. These standards form the basis on which this study has been undertaken and are summarised in Table 1 on page 8 of this report. Further information on these standards and definitions of the different categories of open space referred to in this report can be found in the following two SPD:

- [Provision for Open Space in Connection with New Housing Development](#); and,
- [Provision for Village Halls in Connection with New Housing Development](#)⁶.

3.2 This study also uses the Council's Geographic Information System (or GIS) that maps the seven different categories of open space and village hall distribution across the District. The sport, recreation and open spaces included on the Council's GIS system are those spaces that are deemed to be accessible to the community and of public value. This can include land or facilities in private ownership provided that any cost required to access the facility, either by way of a one-off payment or membership fee, is not set at a level that would prevent most people from gaining entry. This would include for example sports clubs where a reasonable annual membership fee is required. This information is the same as that used to determine developer contributions from housing developments towards open space and village halls, and is verified from time to time by Parish Council's who are also asked to identify any proposals for new sites and facilities.

Consideration of Alternative Methods

3.3 Three alternative approaches were explored as to how best to calculate open space and village hall provision in the District's main settlements, these involved either:

1. applying the distance thresholds contained within SPDs to a central point in each settlement;
2. applying the distance thresholds contained within SPDs to the development limit (i.e. around the built up edge) of each settlement; or
3. applying a grid around settlements based on Ordnance Survey 1 kilometre grids squares to reflect the distance thresholds contained within the SPDs.

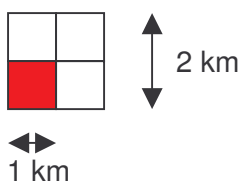
⁶ Documents prepared during the development of these SPD that provide details of how the various standards were developed can be provided on request by contacting the Council's Planning Policy Team at (01423) 556642 or LDF@harrogate.gov.uk

The first two methods were discounted because they would result in problems of double counting where threshold distances overlapped with adjoining settlements. These methods would also create problems in larger settlements such as Harrogate where the settlement is larger than the smaller 1 kilometre (km) distance threshold. Therefore the third method was selected as the best-fit approach and on the whole this method works well with a good coverage of the District's main settlements and only two instances of grids overlapping (where this occurs it is highlighted in the outcomes section of this report).

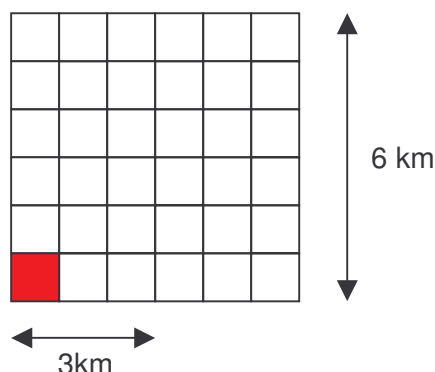
Comparing Existing Provision with Quantity Standards

- 3.4 Two sets of grids were drawn to reflect the 1 km and 3 km (and 3.2 km for village halls) distance thresholds covering Group A, B and C settlements, as defined in the Council's Core Strategy⁷. This resulted in a series of 4 square kilometre (km sq) and 36 km sq grids encompassing one or more settlement. **Appendix 1** provides a map of the resulting pattern of grid squares across the District. These grids were used to interrogate the Council's GIS to determine the amount of community accessible open space (expressed in hectares for each of the seven different types of open space identified in Table 1 on page 8) and the number of village halls currently present within each grid.

1 km Distance Threshold (4 km sq Grid)



3 km Distance Threshold (36 km sq Grid)



- 3.5 Where an open space overlapped the boundary of a grid, only that part of the open space within the grid has been calculated to avoid overestimating the level of open space within each grid and to avoid double counting with an adjacent area.
- 3.6 The grids were also used to estimate the population of each area. The method used counts the number of residential properties currently in the Local Land and Property Gazetteer (LLPG) that fall inside each grid square and multiplies this by an occupancy rate of 2.39 people per property (this figure is the 2001 Census average household size for the District). This method takes the geographical distribution of properties into account and uses more up-to-date information with regards to changes in the housing market since the 2001 census, but assumes the same occupancy rate for all property types. There is a reasonable correlation between the resultant population figures and the 2009 mid year population estimates produced by North Yorkshire County Council.

⁷ The Council's Core Strategy defines a hierarchy of settlements in the District based on their size, role and access to key facilities and services. Group A, B and C Settlements include the District's towns, the City of Ripon and larger villages. The Core Strategy can be found on the Council's website at the following address: www.harrogate.gov.uk/pages/harrogate-3161.aspx

- 3.7 Using the quantity standards set out in Table 1 below, an area for each type of open space, and a number for village halls, was generated based on the population of each grid. This identified the level of provision necessary for each area to meet the minimum level of provision required by each quantity standard.

Table 1: Open Space and Village Hall SPD Standards

			Minimum Size Standard
Parks and Gardens	1km	0.08 hectares per 1000 people	0.25 hectares
Natural and Semi Natural Greenspaces (includes Urban Woodland)	3km	2.7 hectares per 1000 people	0.25 hectares
Outdoor Sports Facilities	3km	1.63 hectares per 1000 people	0.8 hectares
Amenity Greenspace (includes Green Corridors)	1km	1.8 hectares per 1000 people	0.1 hectares
Provision for Children and Young People	1km	0.1 hectares per 1000 people	0.04 hectares
Allotments and Community Gardens	1 km	0.4 hectares per 1000 people	0.2 hectares
Cemeteries, Disused Churchyards and Other Burial Grounds	3 km in Harrogate, Knaresborough and Ripon; 1 km in all other areas	0.5 hectares per 1000 people	No minimum size standard
Village Halls	3.2 km	1 village hall per 650 people	201 square metres

- 3.8 The difference between the existing level of provision and the level of provision required by the quantity standard indicates the potential surplus or deficit for each type of open space and for village hall provision within each grid. **Appendices 3 and 4** provide the results of this exercise for each of the 4 and 36 km sq grids. Those areas showing a deficit have been compared against the minimum size standard for each type of open space. A need for new open space provision has only been identified where the area required would meet the minimum size standards for each type of open space identified in the SPD. Where the deficit falls below 75% of the required area to create a single open space to the minimum size standard, or 75% of the population requirement for a new village hall, these deficits have subsequently been discarded due to insufficient need to support a new facility. This process has highlighted locations where the quantity standards suggest that there is a need for new open space and/or village hall provision.

Issues Arising from Methodology

- 3.9 This methodology applies existing adopted standards across the District's main settlements. This gives a good indication, based on past evidence of people's satisfaction with the level/type of open space and village hall facilities in their area, of the likely need to provide new facilities over the plan period. However, it is also important to take account of local demand for new open spaces within each community before deciding whether it is appropriate to seek to allocate land. Consultation with Parish Council's, residents, local schools, sports clubs and other interested parties will help to identify the demand for new facilities in each settlement and whether there are any opportunities for delivering these facilities (i.e. land that is available and suitable).

- 3.10 It is also worth noting that in most cases the supply indicated in this report does not include outdoor sports facilities available on school sites. This is because the level of community access to school facilities varies greatly from school to school. The only exceptions to this rule are the all weather pitches at Harrogate High School and Rossett School and the sports fields at Ripon Cathedral Choir School and Boroughbridge High. A questionnaire was sent to primary and secondary schools in the District to gauge the current level of community access to school sports facilities and determine whether there was scope to increase community access in the future. A summary of the results of this questionnaire can be found at **Appendix 6**.
- 3.11 The need identified for new Natural and Semi-Natural Greenspace in rural areas may not truly reflect the actual level of access of residents in rural areas to these types of open spaces. Natural England has recently completed a project to map the Accessible Greenspace Standard (ANGSt) in the Leeds City sub-region. Information from a variety of sources was used including local authorities and organisations such as National Trust and Yorkshire Water to identify natural greenspaces larger than 2 hectares in size that are accessible to the public. The definition of 'natural' greenspace for this project included not only designated habitats (e.g. SSSI's and local nature reserves) but also unimproved farmland and grassland, country parks, rivers and canals, woodlands, formal and informal open space, and open access land. **Appendix 2** of this report provides a map of where the ANGSt land overlaps with the 36 sq km grids used in this study. In addition, the table provided at **Appendix 4** includes a figure for the amount of ANGSt land that lies within the 36 km sq grids. On the whole, in those grids that contain ANGSt land, the amount of ANGSt land present far outweighs any shortage of Natural and Semi-Natural Greenspace that may have been identified for that area⁸.
- 3.12 There is no minimum size standard for Cemeteries, Disused Churchyards and Other Burial Grounds contained within the Provision for Open Space SPD, as it is not expected that this type of facility will ever be provided on-site as part of a housing development. The Council's Bereavement Services team have been consulted in the preparation of this report to determine the need to allocate land for new cemetery provision across the District. The Harrogate District Local Plan adopted by the Council in 2001 allocated land to the north of Ripon Cemetery as an extension site for the cemetery. This land has subsequently been found to be unsuitable for this use and the Bereavement Services team have recently completed a consultation on proposals for an alternative extension site. The consultation proposed an extension site situated off Little Harries Lane and is 2.2 hectares in size. Bereavement Services have also indicated that there is likely to be a need to allocate land for extended cemetery provision in Knaresborough and Pateley Bridge over the lifespan of the Sites & Policies DPD.
- 3.13 The definition of Amenity Greenspace includes a wide range and type of open spaces including informal recreation areas, village greens, small grassed areas and roadside verges. In some settlements a large number of the identified Amenity Greenspace's are narrow verges⁹ that, whilst contributing towards the overall amenity of the settlement, are of little or no recreational value. It was therefore felt that the study should distinguish between the overall supply of Amenity

⁸ It should be noted that the ANGSt map contains much of that land identified as Natural and Semi-Natural Greenspace by the Council within these grids.

⁹ Verges are defined as narrow greenspaces (no more than 2-3 metres wide), commonly alongside roads and footpaths, that are important to the amenity of an area but do not lend themselves to active recreational use due to their size and location.

Greenspace that is capable of active recreational use by residents and verges. Two entries for Amenity Greenspace, one including all types of Amenity Greenspace and the other excluding those sites identified on the Council's GIS as verges, have been included in the summary tables for each settlement in Section 5.0 of this report.

- 3.14 This report does not take into account the quality of the open space provision in an area, for example issues relating to drainage, size, condition of equipment or vegetation etc. Likewise it does not take into account the size and capacity of village halls, the range and quality of their facilities or the state of the buildings themselves. Issues relating to the quality of existing facilities are likely to be highlighted through the consultation, however, the focus of this report is on the quantity of provision.

4.0 CONSULTATION

- 4.1 This study identifies a requirement for new open space and village hall provision within a number of settlements based on locally derived quantity standards that have been applied universally across the District. Although this approach provides a good indication of requirements within settlements, it is important to seek the views of local communities on the results of this study. The Council is therefore consulting directly with Parish and Town Councils, local schools, sports clubs and residents groups in Harrogate to determine whether there is a need for new open spaces and/or a village hall in their area and whether they know of any appropriate sites to accommodate this need in each settlement. Comments on the outcome of this report are also welcome from anyone else with an interest before the end of the Sites & Policies DPD Urban Areas Consultation¹⁰ on 4 November 2011.
- 4.2 Following completion of the public consultation process, the Council will attempt to reconcile the need for sport, recreation, open space and village halls provision in each settlement with the site opportunities available for its delivery. Potential allocation sites will themselves be subject to public consultation before the publication of the Sites & Policies DPD.
- 4.3 It is important to note that it will not always be possible or practical to allocate sites for new open spaces and/or a village hall in all settlements. In many cases land may not be available or appropriate within, or in the area surrounding, a settlement to provide either the amount or type of facility required. For example there may be a lack of suitable land due to the areas topography, ground conditions, landscape sensitivity or due to the potential impact of new facilities on existing land uses and residential amenity. In some cases the requirements relate to the needs of a wider area that may cover two or more settlements (e.g. requirements for new outdoor sports provision or a village hall relate to a 36 km sq area). Therefore, if it is not possible to identify a site for an open space or village hall in one settlement, there may be opportunities in or around another settlement within the distance threshold.
- 4.4 In situations where more than one potential site is identified, the Council will need to determine which is the most sustainable location in terms of accessibility and impact on the environment, and which would best serve the local community. New sites should be within the distance thresholds identified in Table 1 on page 8 and preference will be given to sites that are within or adjacent to the built up area of settlements.
- 4.5 Where this report has demonstrated that there is an over-supply of one type of open space when measured against the quantity standard there may be the option, subject to consultation with communities, to use some of that space to provide another type that is shown to be deficient (e.g. using the corner of an Amenity Greenspace to provide a children's play area or allotment).
- 4.6 Provided that the residents of a settlement with an existing village hall are satisfied with the facilities provided by the existing hall, it is unlikely that the Council would support the provision of an additional village hall in the settlement. Where residents are not satisfied with the existing facilities, first preference will be given to an improvement/extension of facilities at the existing village hall before the possibility of delivering a new hall is considered. Generally, the Council will only support the provision of one village hall per village unless it is satisfied that there is a genuine

¹⁰ Details of this consultation can be found on the Council's website at the following address: www.harrogate.gov.uk/ldfconsult

need and community support for a second hall. The location of any new village hall will be guided by the aim to ensure that new facility is located where it is accessible by as many people as possible.

5.0 OUTCOME

- 5.1 Below is a summary of the results for each of the towns and larger villages in the District. The tables show the difference between the current supply of each type of open space and village halls and the level of provision required by the quantity standards.
- 5.2 The table for each settlement shows whether the current area of community accessible open space by type or number of village halls present within the grid covering the settlement is above or below the expected level, as determined by the quantity standard. A positive number (indicated by a +) in the second column of each table signifies that the current level of provision exceeds the amount expected by the quantity standard. A negative number (indicated by a -) signifies that the current level of provision falls short of that expected by the quantity standard. The third column of each table indicates whether a deficit identified in the second column is sufficient to support one or more open space at the minimum size standard for each type of facility (see Table 1 on page 8). For village halls the third column indicates whether there are a sufficient number of people within the area to warrant the provision of one or more new village halls when measured against the quantity standard of 1 village hall per 650 people.
- 5.3 The tables are split to distinguish between the results from the 4 km sq and 36 km sq grids and thereby the difference between those types of open space measured against the 1 kilometre or 3 kilometre distance thresholds (see Table 1 on page 8). It should be emphasised that the results for the 36 km sq grids represent the picture for a wide area that may include more than one settlement (see **Appendix 1**). This is because the greater distance threshold for Natural and Semi-natural Greenspace, Outdoor Sports and Village Halls recognises that people are prepared to travel further for these types of facilities. Therefore, when identifying potential sites to respond to a deficiency for these types of open space and for village halls it is important to bear in mind that a new facility could be provided in any of the settlements present within the distance threshold (i.e. any settlement within the 36 km sq grid).

Group A Towns

5.4 Harrogate

The table below provides a combined total of the results for Harrogate town (i.e. it combines all of the results from the nine 4 km sq grids that cover the town – see Appendix 1).

		Sufficient to support provision at minimum size standard
4 km sq Grids (17a-17i)		
Allotments and Community Gardens	-19.75 Hectares	Yes
Amenity Greenspace (All)	+16.82 Hectares	-
Amenity Greenspace (Excluding verges)	-13.25 Hectares	Yes
Provision for Children and Young People	-5.43 Hectares	Yes
Parks and Gardens	+10.26 Hectares	-
36 km sq Grid		
Natural & Semi-Natural Greenspace	-83.34 Hectares	Yes
Outdoor Sports Facilities	-106.35 Hectares	Yes
Cemeteries and Disused Churchyards	-24.53 Hectares	Not Applicable
Village Halls	Not Applicable	-

The Schools Sports Questionnaire (see Appendix 6) has demonstrated that a number of the schools in the District allow some community use of their sports facilities outside of normal school hours. The area of Outdoor Sports Facilities, including playing fields, tennis courts, netball courts and all weather pitches, at secondary schools and higher education establishments in Harrogate has therefore been calculated¹¹. This comes to a total of approximately 48.7 hectares of land in use by pupils at these schools. Further work is being undertaken by the Council to identify how much of this land, as well as land at primary schools, contributes to wider community sports use.

It should also be noted that there is a further 5 hectares of Outdoor Sports provision that is immediately adjacent to, but outside of, the 36 km sq grid covering Harrogate. This land forms part of the sports facilities at the Killinghall Moor Country Park at the northeastern edge of the town.

5.5 Knaresborough

The table below provides a combined total of the results for Knaresborough town (i.e. it combines all of the results from the four 4 km sq grids that cover the town – see Appendix 1).

The figures provided in the table below for natural and semi-natural open space and outdoor sports also include the village of Goldsborough (i.e. all those settlements present within the 36 km sq grid covering the area).

		Sufficient to support provision at minimum size standard
4 km sq Grids (14b-14e)		
Allotments and Community Gardens	-4.50 Hectares	Yes
Amenity Greenspace (All)	-9.62 Hectares	Yes
Amenity Greenspace (Excluding verges)	-18.82 Hectares	Yes
Provision for Children and Young People	-0.52 Hectares	Yes
Parks and Gardens	+0.89 Hectares	-
36 km sq Grid		
Natural & Semi-Natural Greenspace	-19.18 Hectares	Yes
Outdoor Sports Facilities	-7.79 Hectares	Yes
Cemeteries and Disused Churchyards	-2.66 Hectares	Not Applicable
Village Halls	Not Applicable	-

The Schools Sports Questionnaire (see Appendix 5) has demonstrated that a number of the schools in the District allow some community use of their sports facilities outside of normal school hours. The area of outdoor sports facilities, including playing fields, tennis courts, netball courts and all weather pitches, has therefore been calculated for secondary schools in Knaresborough. This comes to a total of approximately 6 hectares of land in use by pupils at this school. Further work is being undertaken by the Council to identify how much of this land, as well as land at primary schools, contributes to wider community sports use.

The Council's Bereavement Services has indicated that there is likely to be a need to identify land within Knaresborough for new cemetery provision over the plan period to 2023/2024.

¹¹ Please note that the all weather pitches at Harrogate High School and Rossett School are already included in the figure for Outdoor Sports Facilities provided in the Harrogate summary table. These facilities are known to be used extensively by community clubs and are therefore classed as accessible to the community.

5.6 Ripon

The table below provides a combined total of the results for Ripon City (i.e. it combines all of the results from the four 4 km sq grids that cover the town – see Appendix 1).

The figures provided in the table below for natural and semi-natural open space and outdoor sports also include the village of Sharow (i.e. all those settlements present within the 36 km sq grid covering the area).

		Sufficient to support provision at minimum size standard
4 km sq Grids (6a-6d)		
Allotments and Community Gardens	-1.39 Hectares	Yes
Amenity Greenspace (All)	-6.35 Hectares	Yes
Amenity Greenspace (Excluding verges)	-12.10 Hectares	Yes
Provision for Children and Young People	-0.09 Hectares	Yes
Parks and Gardens	+1.17 Hectares	-
36 km sq Grid		
Natural & Semi-Natural Greenspace	+10.47 Hectares	-
Outdoor Sports Facilities	-4.39 Hectares	Yes
Cemeteries and Disused Churchyards	-1.66 Hectares	Not Applicable
Village Halls	Not Applicable	-

Please note that the figure provided for Outdoor Sport in the table above includes just less than 5 Ha of land within the security fence of the Claro Barracks off Clothholme Road. In the past this land has been made available for community use. However, if community access to this land were withheld in the future the deficit for Ripon would increase to -9.33 Ha.

The Schools Sports Questionnaire (see Appendix 6) has demonstrated that a number of schools in the District allow some community use of their sports facilities outside of normal school hours. The area of outdoor sports facilities, including playing fields, tennis courts, netball courts and all weather pitches, at secondary schools in Ripon has therefore been calculated¹². This comes to a total of approximately 9 hectares of land in use by pupils at these schools. Further work is being undertaken by the Council to identify how much of this land, as well as land at primary schools, contributes to wider community sports use.

The Council's Bereavement Services has indicated that there may be a need to identify land within Pateley Brige for new cemetery provision over the plan period to 2023/2024. This will depend on the outcome of the recent consultation on a potential extension site for Ripon Cemetery. Subject to obtaining planning permission, this site could be delivered prior to the adoption of the Sites & Policies DPD and therefore not require formal allocation.

¹² Please note that the playing fields at Ripon Cathedral Choir School are already included in the figure for Outdoor Sports Facilities provided in the Ripon summary table. These playing pitches were included because they are known to be used by Ripon City Panthers Junior Football Club and Ripon Rugby Club Juniors on weekends.

Group B Towns

5.7 Boroughbridge (including Langthorne) & Minskip

The table below provides a combined total of the results for Boroughbridge town along with the villages of Langthorne and Minskip (i.e. it combines all of the results from the two 4 km sq grids that cover the town – see Appendix 1).

The figures provided in the table below for natural and semi-natural greenspace, outdoor sports and village halls also include the villages of Aldborough, Kirby Hill, Roecliffe and Skelton on Ure (i.e. all those settlements present within the 36 km sq grid covering the area).

		Sufficient to support provision at minimum size standard
4 km sq Grids (8c-8f)		
Allotments and Community Gardens	-1.64 Hectares	Yes
Amenity Greenspace (All)	+0.12 Hectares	-
Amenity Greenspace (Excluding verges)	-3.48 Hectares	Yes
Cemeteries and Disused Churchyards	-1.04 Hectares	Not Applicable
Provision for Children and Young People	-0.13 Hectares	Yes
Parks and Gardens	+1.62 Hectares	-
36 km sq Grid		
Natural & Semi-Natural Greenspace	-8.95 Hectares	Yes
Outdoor Sports Facilities	+1.50 Hectares	-
Village Halls	-2.56 Village Halls	Yes

5.8 Masham

		Sufficient to support provision at minimum size standard
4 km sq Grid		
Allotments and Community Gardens	+2.01 Hectares	-
Amenity Greenspace (All)	-0.36 Hectares	Yes
Amenity Greenspace (Excluding verges)	-0.96 Hectares	Yes
Cemeteries and Disused Churchyards	+0.75 Hectares	Not Applicable
Provision for Children and Young People	+0.24 Hectares	-
Parks and Gardens	+0.01 Hectares	-
36 km sq Grid		
Natural & Semi-Natural Greenspace	-3.90 Hectares	Yes
Outdoor Sports Facilities	+0.33 Hectares	-
Village Halls	-1.09 Village Halls	Yes

5.9 Pateley Bridge

The figures provided in the table below for natural and semi-natural greenspace, outdoor sports and village halls include the village of Glasshouses (i.e. all those settlements present within the 36 km sq grid covering the area).

		Sufficient to support provision at minimum size standard
4 km sq Grid		
Allotments and Community Gardens	-0.75 Hectares	Yes
Amenity Greenspace (All)	-0.73 Hectares	Yes
Amenity Greenspace (Excluding verges)	-1.19 Hectares	Yes
Cemeteries and Disused Churchyards	+0.94 Hectares	Not Applicable
Provision for Children and Young People	+0.03 Hectares	-
Parks and Gardens	+1.43 Hectares	-

36 km sq Grid		
Natural & Semi-Natural Greenspace	-8.69 Hectares	Yes
Outdoor Sports Facilities	-3.08 Hectares	Yes
Village Halls	-2.95 Village Halls	Yes

The Schools Sports Questionnaire (see Appendix 6) has demonstrated that a number of the schools in the District allow some community use of their sports facilities outside of normal school hours. The area of outdoor sports facilities, including playing fields, tennis courts, netball courts and all weather pitches, has therefore been calculated for secondary schools in Pateley Bridge. This comes to a total of approximately 2.4 hectares of land in use by pupils at the school. Further work is being undertaken by the Council to identify how much of this land, as well as land at primary schools, contributes to wider community sports use.

The Council's Bereavement Services has indicated that there is likely to be a need to identify land within Pateley Bridge for new cemetery provision over the plan period to 2023/2024.

Group B Villages

5.10 Birstwith

The figures provided in the table below for natural and semi-natural greenspace, outdoor sports and village halls include the villages of Bishop Thornton, Burnt Yates and Hampsthwaite (i.e. all those settlements present within the 36 km sq grid covering the area).

		Sufficient to support provision at minimum size standard
4 km sq Grid		
Allotments and Community Gardens	-2.6 Hectares	Yes
Amenity Greenspace (All)	-0.52 Hectares	Yes
Amenity Greenspace (Excluding verges)	-0.96 Hectares	Yes
Cemeteries and Disused Churchyards	+0.29 Hectares	Not Applicable
Provision for Children and Young People	-0.02 Hectares	No
Parks and Gardens	-0.05 Hectares	No
36 km sq Grid		
Natural & Semi-Natural Greenspace	-8.51 Hectares	Yes
Outdoor Sports Facilities	-0.83 Hectares	Yes
Village Halls	-1.85 Village Halls	Yes

5.11 Burton Leonard

The figures provided in the table below for natural and semi-natural greenspace, outdoor sports and village halls include the villages of Bishop Monkton and Markington (i.e. all those settlements present within the 36 km sq grid covering the area).

		Sufficient to support provision at minimum size standard
4 km sq Grid		
Allotments and Community Gardens	-0.27 Hectares	Yes
Amenity Greenspace (All)	+0.05 Hectares	-
Amenity Greenspace (Excluding verges)	-0.51 Hectares	Yes
Cemeteries and Disused Churchyards	+0.15 Hectares	Not Applicable
Provision for Children and Young People	-0.04 Hectares	Yes
Parks and Gardens	-0.05 Hectares	No

36 km sq Grid		
Natural & Semi-Natural Greenspace	-2.54 Hectares	Yes
Outdoor Sports Facilities	+1.68 Hectares	-
Village Halls	+0.32 Village Halls	-

Please note that there is a degree of double counting on the Bishop Monkton, Burton Leonard and Markington 36 km sq grid with that covering Killinghall, Scotton and Ripley.

5.12 Darley & Dacre

The figures provided in the table below for natural and semi-natural greenspace, outdoor sports and village halls also include the villages of Summerbridge and Dacre Banks (i.e. all those settlements present within the 36 km sq grid covering the area).

		Sufficient to support provision at minimum size standard
4 km sq Grid		
Allotments and Community Gardens	-0.35 Hectares	Yes
Amenity Greenspace (All)	-0.32 Hectares	Yes
Amenity Greenspace (Excluding verges)	-1.20 Hectares	Yes
Cemeteries and Disused Churchyards	-0.38 Hectares	Not Applicable
Provision for Children and Young People	-0.01 Hectares	No
Parks and Gardens	-0.07 Hectares	No
36 km sq Grid		
Natural & Semi-Natural Greenspace	-7.85 Hectares	Yes
Outdoor Sports Facilities	-1.01 Hectares	Yes
Village Halls	+2.50 Village Halls	-

5.13 Follifoot

The figures provided in the table below for natural and semi-natural greenspace, outdoor sports and village halls also include the villages of Kirk Deighton, Sicklinghall and Spofforth (i.e. all those settlements present within the 36 km sq grid covering the area).

		Sufficient to support provision at minimum size standard
4 km sq Grid		
Allotments and Community Gardens	-0.14 Hectares	No
Amenity Greenspace (All)	-0.47 Hectares	Yes
Amenity Greenspace (Excluding verges)	-0.73 Hectares	Yes
Cemeteries and Disused Churchyards	+0.11 Hectares	Not Applicable
Provision for Children and Young People	-0.05 Hectares	Yes
Parks and Gardens	-0.03 Hectares	No
36 km sq Grid		
Natural & Semi-Natural Greenspace	-2.12 Hectares	Yes
Outdoor Sports Facilities	+2.64 Hectares	-
Village Halls	+1.56 Village Halls	-

It should be noted that half of the 4 km sq grid covering Follifoot lies outside of the 36 km sq grid that also encompasses Kirk Deighton, Sicklinghall and Spofforth.

5.14 Great Ouseburn

The figures provided in the table below for natural and semi-natural greenspace, outdoor sports and village halls also include the villages of Little Ouseburn and Marton cum Grafton (i.e. all those settlements present within the 36 km sq grid covering the area).

		Sufficient to support provision at minimum size standard
4 km sq Grid		
Allotments and Community Gardens	+0.06 Hectares	-
Amenity Greenspace (All)	+0.80 Hectares	-
Amenity Greenspace (Excluding verges)	-0.91 Hectares	Yes
Cemeteries and Disused Churchyards	+0.74 Hectares	Not Applicable
Provision for Children and Young People	+0.01 Hectares	-
Parks and Gardens	-0.05 Hectares	No
36 km sq Grid		
Natural & Semi-Natural Greenspace	+2.20 Hectares	-
Outdoor Sports Facilities	-0.35 Hectares	No
Village Halls	+0.30 Village Halls	-

5.15 Green Hammerton

The figures provided in the table below for natural and semi-natural greenspace, outdoor sports and village halls also include the villages of Kirk Hammerton and Whixley (i.e. all those settlements present within the 36 km sq grid covering the area).

		Sufficient to support provision at minimum size standard
4 km sq Grid		
Allotments and Community Gardens	-0.19 Hectares	Yes
Amenity Greenspace (All)	+0.09 Hectares	-
Amenity Greenspace (Excluding verges)	-0.09 Hectares	Yes
Cemeteries and Disused Churchyards	-0.18 Hectares	Not Applicable
Provision for Children and Young People	+0.00 Hectares	-
Parks and Gardens	-0.05 Hectares	No
36 km sq Grid		
Natural & Semi-Natural Greenspace	-3.81 Hectares	Yes
Outdoor Sports Facilities	+3.02 Hectares	-
Village Halls	-0.38 Village Halls	No

5.16 Hampsthwaite

The figures provided in the table below for natural and semi-natural greenspace, outdoor sports and village halls include the villages of Birstwith, Bishop Thornton and Burnt Yates (i.e. all those settlements present within the 36 km sq grid covering the area).

		Sufficient to support provision at minimum size standard
4 km sq Grid		
Allotments and Community Gardens	-0.52 Hectares	Yes
Amenity Greenspace (All)	-0.09 Hectares	Yes
Amenity Greenspace (Excluding verges)	-0.77 Hectares	Yes
Cemeteries and Disused Churchyards	+0.09 Hectares	Not Applicable
Provision for Children and Young People	+0.04 Hectares	-
Parks and Gardens	-0.10 Hectares	No

36 km sq Grid		
Natural & Semi-Natural Greenspace	-8.51 Hectares	Yes
Outdoor Sports Facilities	-0.83 Hectares	Yes
Village Halls	-1.85 Village Halls	Yes

5.17 Killinghall

The figures provided in the table below for natural and semi-natural greenspace, outdoor sports and village halls include the villages of Scotton and Ripley (i.e. all those settlements present within the 36 km sq grid covering the area).

		Sufficient to support provision at minimum size standard
4 km sq Grid		
Allotments and Community Gardens	-0.41 Hectares	Yes
Amenity Greenspace (All)	-0.78 Hectares	Yes
Amenity Greenspace (Excluding verges)	-1.35 Hectares	Yes
Cemeteries and Disused Churchyards	-0.11 Hectares	Not Applicable
Provision for Children and Young People	-0.08 Hectares	Yes
Parks and Gardens	-0.08 Hectares	No
36 km sq Grid		
Natural & Semi-Natural Greenspace	+42.97 Hectares	-
Outdoor Sports Facilities	+3.92 Hectares	-
Village Halls	+0.36 Village Halls	-

Please note that there is a degree of double counting on the Killinghall, Scotton and Ripley 36 km sq grid with that covering Bishop Monkton, Burton Leonard and Markington. The northern boundary of the grid includes the village of Burton Leonard.

5.18 Kirkby Malzeard

The figures provided in the table below for natural and semi-natural greenspace, outdoor sports and village halls include the village of Grewelthorpe (i.e. all those settlements present within the 36 km sq grid covering the area).

		Sufficient to support provision at minimum size standard
4 km sq Grid		
Allotments and Community Gardens	-0.38 Hectares	Yes
Amenity Greenspace (All)	+0.51 Hectares	-
Amenity Greenspace (Excluding verges)	+0.05 Hectares	-
Cemeteries and Disused Churchyards	+0.62 Hectares	Not Applicable
Provision for Children and Young People	-0.04 Hectares	Yes
Parks and Gardens	-0.07 Hectares	No
36 km sq Grid		
Natural & Semi-Natural Greenspace	-4.90 Hectares	Yes
Outdoor Sports Facilities	-1.61 Hectares	Yes
Village Halls	+1.04 Village Halls	-

5.19 Marton cum Grafton

The figures provided in the table below for natural and semi-natural greenspace, outdoor sports and village halls also include the villages of Great Ouseburn and Little Ouseburn (i.e. all those settlements present within the 36 km sq grid covering the area).

		Sufficient to support provision at minimum size standard
4 km sq Grid		
Allotments and Community Gardens	-0.19 Hectares	Yes
Amenity Greenspace (All)	+0.12 Hectares	-
Amenity Greenspace (Excluding verges)	-0.75 Hectares	Yes
Cemeteries and Disused Churchyards	+0.11 Hectares	Not Applicable
Provision for Children and Young People	+0.09 Hectares	-
Parks and Gardens	-0.04 Hectares	No
36 km sq Grid		
Natural & Semi-Natural Greenspace	+2.20 Hectares	-
Outdoor Sports Facilities	-0.35 Hectares	No
Village Halls	+0.30 Village Halls	-

5.20 Pannal

The table below provides a combined total of the results for Pannal village (i.e. it combines all of the results from the two 4 km sq grids that cover the village).

The figures provided in the table below for natural and semi-natural greenspace, outdoor sports and village halls include the village of Kirkby Overblow (i.e. all those settlements present within the 36 km sq grid covering the area).

		Sufficient to support provision at minimum size standard
4 km sq Grid		
Allotments and Community Gardens	-0.88 Hectares	Yes
Amenity Greenspace (All)	-0.87 Hectares	Yes
Amenity Greenspace (Excluding verges)	-1.48 Hectares	Yes
Cemeteries and Disused Churchyards	-0.69 Hectares	Not Applicable
Provision for Children and Young People	-0.01 Hectares	No
Parks and Gardens	-0.18 Hectares	No
36 km sq Grid		
Natural & Semi-Natural Greenspace	-5.73 Hectares	Yes
Outdoor Sports Facilities	-3.69 Hectares	Yes
Village Halls	-3.82 Village Halls	Yes

5.21 Ripley

The figures provided in the table below for natural and semi-natural greenspace, outdoor sports and village halls include the villages of Killinghall and Scotton (i.e. all those settlements present within the 36 km sq grid covering the area).

		Sufficient to support provision at minimum size standard
4 km sq Grid		
Allotments and Community Gardens	-0.08 Hectares	No
Amenity Greenspace (All)	-0.06 Hectares	No
Amenity Greenspace (Excluding verges)	-0.37 Hectares	Yes
Cemeteries and Disused Churchyards	+0.38 Hectares	Not Applicable
Provision for Children and Young People	+0.05 Hectares	-
Parks and Gardens	-0.02 Hectares	No
36 km sq Grid		
Natural & Semi-Natural Greenspace	+42.97 Hectares	-
Outdoor Sports Facilities	+3.92 Hectares	-
Village Halls	+0.36 Village Halls	-

Please note that there is a degree of double counting on the Killinghall, Scotton and Ripley 36 km sq grid with that covering Bishop Monkton, Burton Leonard and Markington. The northern boundary of the grid includes the village of Burton Leonard.

5.22 Spofforth

The figures provided in the table below for natural and semi-natural greenspace, outdoor sports and village halls also include the villages of Follifoot, Kirk Deighton and Sicklinghall (i.e. all those settlements present within the 36 km sq grid covering the area).

		Sufficient to support provision at minimum size standard
4 km sq Grid		
Allotments and Community Gardens	-0.45 Hectares	Yes
Amenity Greenspace (All)	+0.81 Hectares	-
Amenity Greenspace (Excluding verges)	+0.42 Hectares	-
Cemeteries and Disused Churchyards	+0.15 Hectares	Not Applicable
Provision for Children and Young People	-0.02 Hectares	No
Parks and Gardens	-0.09 Hectares	No
36 km sq Grid		
Natural & Semi-Natural Greenspace	-2.12 Hectares	Yes
Outdoor Sports Facilities	+2.64 Hectares	-
Village Halls	+1.56 Village Halls	-

5.23 Summerbridge & Dacre Banks

The figures provided in the table below for natural and semi-natural greenspace, outdoor sports and village halls also include the villages of Darley and Dacre (i.e. all those settlements present within the 36 km sq grid covering the area).

		Sufficient to support provision at minimum size standard
4 km sq Grid		
Allotments and Community Gardens	-0.34 Hectares	Yes
Amenity Greenspace (All)	-0.76 Hectares	Yes
Amenity Greenspace (Excluding verges)	-1.35 Hectares	Yes
Cemeteries and Disused Churchyards	+0.01 Hectares	Not Applicable
Provision for Children and Young People	-0.02 Hectares	No
Parks and Gardens	-0.08 Hectares	No
36 km sq Grid		
Natural & Semi-Natural Greenspace	-7.85 Hectares	Yes
Outdoor Sports Facilities	-1.01 Hectares	Yes
Village Halls	+2.50 Village Halls	-

5.24 Tockwith

The figures provided in the table below for natural and semi-natural greenspace, outdoor sports and village halls include the village of Long Marston (i.e. all those settlements present within the 36 km sq grid covering the area).

		Sufficient to support provision at minimum size standard
4 km sq Grid		
Allotments and Community Gardens	+0.06 Hectares	-
Amenity Greenspace (All)	+17.40 Hectares	-

Amenity Greenspace (Excluding verges)	+16.25 Hectares	-
Cemeteries and Disused Churchyards	-0.10 Hectares	Not Applicable
Provision for Children and Young People	+0.01 Hectares	-
Parks and Gardens	-0.11 Hectares	No
36 km sq Grid		
Natural & Semi-Natural Greenspace	-5.85 Hectares	Yes
Outdoor Sports Facilities	+0.60 Hectares	-
Village Halls	-1.61 Village Halls	Yes

Group C Village

5.25 **Aldborough**

The figures provided in the table below for natural and semi-natural greenspace, outdoor sports and village halls include the villages of Boroughbridge, Kirby Hill, Langthorne, Minskip, Roecliffe and Skelton on Ure (i.e. all those settlements present within the 36 km sq grid covering the area).

		Sufficient to support provision at minimum size standard
4 km sq Grid		
Allotments and Community Gardens	-0.01 Hectares	No
Amenity Greenspace (All)	+0.28 Hectares	-
Amenity Greenspace (Excluding verges)	-0.40 Hectares	Yes
Cemeteries and Disused Churchyards	+0.81 Hectares	Not Applicable
Provision for Children and Young People	-0.04 Hectares	Yes
Parks and Gardens	-0.03 Hectares	No
36 km sq Grid		
Natural & Semi-Natural Greenspace	-8.95 Hectares	Yes
Outdoor Sports Facilities	+1.50 Hectares	-
Village Halls	-2.56 Village Halls	Yes

5.26 **Askwith**

		Sufficient to support provision at minimum size standard
4 km sq Grid		
Allotments and Community Gardens	-0.07 Hectares	No
Amenity Greenspace (All)	-0.06 Hectares	No
Amenity Greenspace (Excluding verges)	-0.28 Hectares	Yes
Cemeteries and Disused Churchyards	-0.09 Hectares	Not Applicable
Provision for Children and Young People	-0.02 Hectares	No
Parks and Gardens	-0.01 Hectares	No
36 km sq Grid		
Natural & Semi-Natural Greenspace	-1.57 Hectares	Yes
Outdoor Sports Facilities	-0.97 Hectares	Yes
Village Halls	+2.08 Village Halls	-

5.27 **Beckwithshaw**

		Sufficient to support provision at minimum size standard
4 km sq Grid		
Allotments and Community Gardens	-0.08 Hectares	No
Amenity Greenspace (All)	-0.24 Hectares	Yes
Amenity Greenspace (Excluding verges)	-0.37 Hectares	Yes
Cemeteries and Disused Churchyards	+0.03 Hectares	Not Applicable
Provision for Children and Young People	-0.02 Hectares	No
Parks and Gardens	-0.02 Hectares	No

36 km sq Grid		
Natural & Semi-Natural Greenspace	+15.58 Hectares	-
Outdoor Sports Facilities	+6.08 Hectares	-
Village Halls	+0.68 Village Halls	No

The figures provided in the table above for outdoor sports include the approximately 5 hectares of land at Killinghall Moor Country Park, which is within the 36 km sq grid that covers the village.

The figure provided in the table above for Village Halls is based on the estimated population and current level of village hall provision in the 4 km sq grid covering Beckwithshaw. This is because the 36 km sq grid that includes the village also includes the westernmost end of the Jennyfield estate and the Queen Ethelburgas estate, both of which are part of Harrogate town. Harrogate is classed as an urban area and the inclusion of the town's population greatly inflated the level of need identified for village halls in Beckwithshaw.

5.28 Bishop Monkton

The figures provided in the table below for natural and semi-natural greenspace, outdoor sports and village halls include the villages of Burton Leonard and Markington (i.e. all those settlements present within the 36 km sq grid covering the area).

		Sufficient to support provision at minimum size standard
4 km sq Grid		
Allotments and Community Gardens	-0.34 Hectares	Yes
Amenity Greenspace (All)	+0.26 Hectares	-
Amenity Greenspace (Excluding verges)	-0.31 Hectares	Yes
Cemeteries and Disused Churchyards	+0.11 Hectares	Not Applicable
Provision for Children and Young People	+0.02 Hectares	-
Parks and Gardens	-0.07 Hectares	No
36 km sq Grid		
Natural & Semi-Natural Greenspace	-2.54 Hectares	Yes
Outdoor Sports Facilities	+1.68 Hectares	-
Village Halls	+0.32 Village Halls	-

Please note that there is a degree of double counting on the Bishop Monkton, Burton Leonard and Markington 36 km sq grid with that covering Killinghall, Scotton and Ripley.

5.29 Bishop Thornton

The figures provided in the table below for natural and semi-natural greenspace, outdoor sports and village halls include the villages of Birstwith, Burnt Yates and Hampsthwaite (i.e. all those settlements present within the 36 km sq grid covering the area).

		Sufficient to support provision at minimum size standard
4 km sq Grid		
Allotments and Community Gardens	-0.19 Hectares	Yes
Amenity Greenspace (All)	-0.49 Hectares	Yes
Amenity Greenspace (Excluding verges)	-0.84 Hectares	Yes
Cemeteries and Disused Churchyards	0.24 Hectares	Not Applicable
Provision for Children and Young People	-0.05 Hectares	Yes

Parks and Gardens	-0.04 Hectares	No
36 km sq Grid		
Natural & Semi-Natural Greenspace	-8.51 Hectares	Yes
Outdoor Sports Facilities	-0.83 Hectares	Yes
Village Halls	-1.85 Village Halls	Yes

5.30 Burnt Yates

The figures provided in the table below for natural and semi-natural greenspace, outdoor sports and village halls include the villages of Birstwith, Bishop Thornton and Hampsthwaite (i.e. all those settlements present within the 36 km sq grid covering the area).

		Sufficient to support provision at minimum size standard
4 km sq Grid		
Allotments and Community Gardens	-0.07 Hectares	No
Amenity Greenspace (All)	-0.12 Hectares	Yes
Amenity Greenspace (Excluding verges)	-0.34 Hectares	Yes
Cemeteries and Disused Churchyards	+0.01 Hectares	Not Applicable
Provision for Children and Young People	-0.01 Hectares	No
Parks and Gardens	-0.03 Hectares	No
36 km sq Grid		
Natural & Semi-Natural Greenspace	-8.51 Hectares	Yes
Outdoor Sports Facilities	-0.83 Hectares	Yes
Village Halls	-1.85 Village Halls	Yes

5.31 Cundall

The figures provided in the table below for natural and semi-natural greenspace, outdoor sports and village halls include the villages of Dishforth and Rainton (i.e. all those settlements present within the 36 km sq grid covering the area).

		Sufficient to support provision at minimum size standard
4 km sq Grid		
Allotments and Community Gardens	-0.03 Hectares	No
Amenity Greenspace (All)	+0.29 Hectares	-
Amenity Greenspace (Excluding verges)	-0.13 Hectares	Yes
Cemeteries and Disused Churchyards	+0.41 Hectares	Not Applicable
Provision for Children and Young People	-0.01 Hectares	No
Parks and Gardens	-0.01 Hectares	No
36 km sq Grid		
Natural & Semi-Natural Greenspace	-5.03 Hectares	Yes
Outdoor Sports Facilities	+0.12 Hectares	-
Village Halls	+0.90 Village Halls	-

Half of the 4sqkm grid covering Cundall lies outside of the 36 km sq grid that also encompassed Dishforth and Rainton.

5.32 Dishforth

The figures provided in the table below for natural and semi-natural greenspace, outdoor sports and village halls include the villages of Cundall and Rainton (i.e. all those settlements present within the 36 km sq grid covering the area).

		Sufficient to support provision at minimum size standard
4 km sq Grid		
Allotments and Community Gardens	-0.20 Hectares	Yes
Amenity Greenspace (All)	+0.30 Hectares	-
Amenity Greenspace (Excluding verges)	-0.42 Hectares	Yes
Cemeteries and Disused Churchyards	+0.16 Hectares	Not Applicable
Provision for Children and Young People	+0.00 Hectares	-
Parks and Gardens	-0.04 Hectares	No
36 km sq Grid		
Natural & Semi-Natural Greenspace	-5.03 Hectares	Yes
Outdoor Sports Facilities	+0.12 Hectares	-
Village Halls	+0.90 Village Halls	-

5.33 Glasshouses

The figures provided in the table below for natural and semi-natural greenspace, outdoor sports and village halls include the town of Pateley Bridge (i.e. all those settlements present within the 36 km sq grid covering the area).

		Sufficient to support provision at minimum size standard
4 km sq Grid		
Allotments and Community Gardens	+0.11 Hectares	-
Amenity Greenspace (All)	-0.59 Hectares	Yes
Amenity Greenspace (Excluding verges)	-1.17 Hectares	Yes
Cemeteries and Disused Churchyards	-0.35 Hectares	Not Applicable
Provision for Children and Young People	-0.01 Hectares	No
Parks and Gardens	-0.06 Hectares	No
36 km sq Grid		
Natural & Semi-Natural Greenspace	-8.69 Hectares	Yes
Outdoor Sports Facilities	-3.08 Hectares	Yes
Village Halls	-2.95 Village Halls	Yes

5.34 Goldsborough

The figures provided in the table below for natural and semi-natural greenspace, outdoor sports and village halls include the town of Knaresborough (i.e. all those settlements present within the 36 km sq grid covering the area).

		Sufficient to support provision at minimum size standard
4 km sq Grid		
Allotments and Community Gardens	+0.07 Hectares	No
Amenity Greenspace (All)	+0.03 Hectares	-
Amenity Greenspace (Excluding verges)	-0.49 Hectares	Yes
Cemeteries and Disused Churchyards	+0.43 Hectares	Not Applicable
Provision for Children and Young People	-0.04 Hectares	Yes
Parks and Gardens	-0.03 Hectares	No
36 km sq Grid		
Natural & Semi-Natural Greenspace	-19.18 Hectares	Yes
Outdoor Sports Facilities	-7.79 Hectares	Yes
Village Halls	-0.56 Village Halls	No

The figure provided in the table above for Village Halls is based on the estimated population and current level of village hall provision in the 4 km sq grid covering Goldsborough. This is because the 36 km sq grid that includes the village also includes the town of Knaresborough. Knaresborough is classed as an urban area

and the inclusion of the town's population would greatly exaggerate the level of need identified for village halls in Goldsborough.

5.35 Grantley

The figures provided in the table below for natural and semi-natural greenspace, outdoor sports and village halls include the village of Sawley (i.e. all those settlements present within the 36 km sq grid covering the area).

		Sufficient to support provision at minimum size standard
4 km sq Grid		
Allotments and Community Gardens	-0.06 Hectares	No
Amenity Greenspace (All)	+0.30 Hectares	-
Amenity Greenspace (Excluding verges)	+0.20 Hectares	-
Cemeteries and Disused Churchyards	-0.07 Hectares	Not Applicable
Provision for Children and Young People	+0.07 Hectares	-
Parks and Gardens	-0.01 Hectares	No
36 km sq Grid		
Natural & Semi-Natural Greenspace	-0.90 Hectares	Yes
Outdoor Sports Facilities	-1.23 Hectares	Yes
Village Halls	+0.84 Village Halls	-

5.36 Grewelthorpe

The figures provided in the table below for natural and semi-natural greenspace, outdoor sports and village halls include the village of Kirkby Malzeard (i.e. all those settlements present within the 36 km sq grid covering the area).

		Sufficient to support provision at minimum size standard
4 km sq Grid		
Allotments and Community Gardens	-0.17 Hectares	Yes
Amenity Greenspace (All)	+0.12 Hectares	-
Amenity Greenspace (Excluding verges)	-0.34 Hectares	Yes
Cemeteries and Disused Churchyards	+0.14 Hectares	Not Applicable
Provision for Children and Young People	+0.02 Hectares	-
Parks and Gardens	-0.03 Hectares	-
36 km sq Grid		
Natural & Semi-Natural Greenspace	-4.90 Hectares	Yes
Outdoor Sports Facilities	-1.61 Hectares	Yes
Village Halls	+1.04 Village Halls	-

5.37 Kirby Hill

The figures provided in the table below for natural and semi-natural greenspace, outdoor sports and village halls include the villages of Aldborough, Boroughbridge, Langthorne, Minskip, Roecliffe and Skelton on Ure (i.e. all those settlements present within the 36 km sq grid covering the area).

		Sufficient to support provision at minimum size standard
4 km sq Grid		
Allotments and Community Gardens	-0.20 Hectares	Yes
Amenity Greenspace (All)	+0.34 Hectares	-
Amenity Greenspace (Excluding verges)	-0.43 Hectares	Yes
Cemeteries and Disused Churchyards	+0.27 Hectares	Not Applicable
Provision for Children and Young People	-0.05 Hectares	Yes

Parks and Gardens	-0.04 Hectares	No
36 km sq Grid		
Natural & Semi-Natural Greenspace	-8.95 Hectares	Yes
Outdoor Sports Facilities	+1.50 Hectares	-
Village Halls	-2.56 Village Halls	Yes

5.38 Kirk Deighton

The figures provided in the table below for natural and semi-natural greenspace, outdoor sports and village halls also include the villages of Follifoot, Sicklinghall and Spofforth (i.e. all those settlements present within the 36 km sq grid covering the area).

		Sufficient to support provision at minimum size standard
4 km sq Grid		
Allotments and Community Gardens	+0.09 Hectares	-
Amenity Greenspace (All)	-0.27 Hectares	Yes
Amenity Greenspace (Excluding verges)	-0.44 Hectares	Yes
Cemeteries and Disused Churchyards	+0.31 Hectares	Not Applicable
Provision for Children and Young People	-0.04 Hectares	Yes
Parks and Gardens	-0.03 Hectares	No
36 km sq Grid		
Natural & Semi-Natural Greenspace	-2.12 Hectares	Yes
Outdoor Sports Facilities	+2.64 Hectares	-
Village Halls	+1.56 Village Halls	-

5.39 Kirk Hammerton

The figures provided in the table below for natural and semi-natural greenspace, outdoor sports and village halls include the villages of Green Hammerton and Whixley (i.e. all those settlements present within the 36 km sq grid covering the area).

		Sufficient to support provision at minimum size standard
4 km sq Grid		
Allotments and Community Gardens	-0.16 Hectares	Yes
Amenity Greenspace (All)	+0.49 Hectares	-
Amenity Greenspace (Excluding verges)	-0.23 Hectares	Yes
Cemeteries and Disused Churchyards	-0.20 Hectares	Not Applicable
Provision for Children and Young People	+0.07 Hectares	-
Parks and Gardens	-0.03 Hectares	No
36 km sq Grid		
Natural & Semi-Natural Greenspace	-3.81 Hectares	Yes
Outdoor Sports Facilities	+3.02 Hectares	-
Village Halls	-0.38 Village Halls	No

5.40 Kirkby Overblow

The figures provided in the table below for natural and semi-natural greenspace, outdoor sports and village halls include the village of Pannal (i.e. all those settlements present within the 36 km sq grid covering the area).

		Sufficient to support provision at minimum size standard
4 km sq Grid		
Allotments and Community Gardens	-0.11 Hectares	No

Amenity Greenspace (All)	+0.20 Hectares	-
Amenity Greenspace (Excluding verges)	-0.23 Hectares	Yes
Cemeteries and Disused Churchyards	+0.83 Hectares	Not Applicable
Provision for Children and Young People	+0.10 Hectares	-
Parks and Gardens	-0.02 Hectares	No
36 km sq Grid		
Natural & Semi-Natural Greenspace	-5.73 Hectares	Yes
Outdoor Sports Facilities	-3.69 Hectares	Yes
Village Halls	-3.82 Village Halls	Yes

5.41 Little Ouseburn

The figures provided in the table below for natural and semi-natural greenspace, outdoor sports and village halls also include the villages of Great Ouseburn and Marton cum Grafton (i.e. all those settlements present within the 36 km sq grid covering the area).

		Sufficient to support provision at minimum size standard
4 km sq Grid		
Allotments and Community Gardens	-0.11 Hectares	No
Amenity Greenspace (All)	+0.20 Hectares	-
Amenity Greenspace (Excluding verges)	-0.38 Hectares	Yes
Cemeteries and Disused Churchyards	-0.14 Hectares	Not Applicable
Provision for Children and Young People	+0.21 Hectares	-
Parks and Gardens	-0.02 Hectares	No
36 km sq Grid		
Natural & Semi-Natural Greenspace	+2.20 Hectares	-
Outdoor Sports Facilities	-0.35 Hectares	No
Village Halls	+0.30 Village Halls	-

5.42 Lofthouse

The figures provided in the table below for natural and semi-natural greenspace, outdoor sports and village halls include the village of Ramsgill (i.e. all those settlements present within the 36 km sq grid covering the area).

		Sufficient to support provision at minimum size standard
4 km sq Grid		
Allotments and Community Gardens	-0.09 Hectares	No
Amenity Greenspace (All)	-0.25 Hectares	Yes
Amenity Greenspace (Excluding verges)	-0.40 Hectares	Yes
Cemeteries and Disused Churchyards	+0.85 Hectares	Not Applicable
Provision for Children and Young People	+0.17 Hectares	-
Parks and Gardens	-0.02 Hectares	No
36 km sq Grid		
Natural & Semi-Natural Greenspace	-1.08 Hectares	Yes
Outdoor Sports Facilities	+0.03 Hectares	-
Village Halls	+2.36 Village Halls	-

5.43 Long Marston

The figures provided in the table below for natural and semi-natural greenspace, outdoor sports and village halls include the village of Tockwith (i.e. all those settlements present within the 36 km sq grid covering the area).

		Sufficient to support provision at minimum size standard
4 km sq Grid		
Allotments and Community Gardens	-0.20 Hectares	Yes
Amenity Greenspace (All)	+2.87 Hectares	-
Amenity Greenspace (Excluding verges)	+1.58 Hectares	-
Cemeteries and Disused Churchyards	+0.25 Hectares	Not Applicable
Provision for Children and Young People	-0.02 Hectares	No
Parks and Gardens	-0.04 Hectares	No
36 km sq Grid		
Natural & Semi-Natural Greenspace	-5.85 Hectares	Yes
Outdoor Sports Facilities	+0.60 Hectares	-
Village Halls	-1.61 Village Halls	Yes

5.44 Markington

The figures provided in the table below for natural and semi-natural greenspace, outdoor sports and village halls include the villages of Burton Leonard and Bishop Monkton (i.e. all those settlements present within the 36 km sq grid covering the area).

		Sufficient to support provision at minimum size standard
4 km sq Grid		
Allotments and Community Gardens	-0.17 Hectares	Yes
Amenity Greenspace (All)	-0.44 Hectares	Yes
Amenity Greenspace (Excluding verges)	-0.67 Hectares	Yes
Cemeteries and Disused Churchyards	+0.29 Hectares	Not Applicable
Provision for Children and Young People	+0.12 Hectares	-
Parks and Gardens	-0.03 Hectares	No
36 km sq Grid		
Natural & Semi-Natural Greenspace	-2.54 Hectares	Yes
Outdoor Sports Facilities	+1.68 Hectares	-
Village Halls	+0.32 Village Halls	-

Please note that there is a degree of double counting in the Bishop Monkton, Burton Leonard and Markington 36 km sq grid with that covering Killinghall, Scotton and Ripley.

5.45 Melmerby & Wath

The figures provided in the table below for natural and semi-natural greenspace, outdoor sports and village halls include the village of North Stainley (i.e. all those settlements present within the 36 km sq grid covering the area).

		Sufficient to support provision at minimum size standard
4 km sq Grid		
Allotments and Community Gardens	-0.24 Hectares	Yes
Amenity Greenspace (All)	-0.46 Hectares	Yes
Amenity Greenspace (Excluding verges)	-0.75 Hectares	Yes
Cemeteries and Disused Churchyards	+0.16 Hectares	Not Applicable
Provision for Children and Young People	+0.01 Hectares	-
Parks and Gardens	-0.05 Hectares	No
36 km sq Grid		
Natural & Semi-Natural Greenspace	-1.86 Hectares	Yes
Outdoor Sports Facilities	-0.21 Hectares	No
Village Halls	+0.06 Village Halls	-

5.46 North Stainley

The figures provided in the table below for natural and semi-natural greenspace, outdoor sports and village halls include the villages of Melmerby and Wath (i.e. all those settlements present within the 36 km sq grid covering the area).

		Sufficient to support provision at minimum size standard
4 km sq Grid		
Allotments and Community Gardens	-0.21 Hectares	Yes
Amenity Greenspace (All)	+0.12 Hectares	-
Amenity Greenspace (Excluding verges)	-0.46 Hectares	Yes
Cemeteries and Disused Churchyards	-0.07 Hectares	Not Applicable
Provision for Children and Young People	+0.09 Hectares	-
Parks and Gardens	-0.04 Hectares	No
36 km sq Grid		
Natural & Semi-Natural Greenspace	-1.86 Hectares	Yes
Outdoor Sports Facilities	-0.21 Hectares	No
Village Halls	+0.06 Village Halls	-

5.47 Rainton

The figures provided in the table below for natural and semi-natural greenspace, outdoor sports and village halls include the villages of Cundall and Dishforth (i.e. all those settlements present within the 36 km sq grid covering the area).

		Sufficient to support provision at minimum size standard
4 km sq Grid		
Allotments and Community Gardens	-0.14 Hectares	No
Amenity Greenspace (All)	+0.32 Hectares	-
Amenity Greenspace (Excluding verges)	-0.57 Hectares	Yes
Cemeteries and Disused Churchyards	-0.18 Hectares	Not Applicable
Provision for Children and Young People	+0.63 Hectares	-
Parks and Gardens	-0.03 Hectares	No
36 km sq Grid		
Natural & Semi-Natural Greenspace	-5.03 Hectares	Yes
Outdoor Sports Facilities	+0.12 Hectares	-
Village Halls	+0.90 Village Halls	-

5.48 Ramsgill

The figures provided in the table below for natural and semi-natural greenspace, outdoor sports and village halls include the village of Lofthouse (i.e. all those settlements present within the 36 km sq grid covering the area).

		Sufficient to support provision at minimum size standard
4 km sq Grid		
Allotments and Community Gardens	-0.05 Hectares	-
Amenity Greenspace (All)	+0.03 Hectares	-
Amenity Greenspace (Excluding verges)	-0.13 Hectares	Yes
Cemeteries and Disused Churchyards	+0.13 Hectares	Not Applicable
Provision for Children and Young People	-0.01 Hectares	No
Parks and Gardens	-0.01 Hectares	No
36 km sq Grid		
Natural & Semi-Natural Greenspace	-1.08 Hectares	Yes
Outdoor Sports Facilities	+0.03 Hectares	-
Village Halls	+2.36 Village Halls	-

5.49 Roecliffe

The figures provided in the table below for natural and semi-natural greenspace, outdoor sports and village halls include the villages of Aldborough, Boroughbridge, Kirby Hill, Langthorne, Minskip and Skelton on Ure (i.e. all those settlements present within the 36 km sq grid covering the area).

		Sufficient to support provision at minimum size standard
4 km sq Grid		
Allotments and Community Gardens	-0.09 Hectares	No
Amenity Greenspace (All)	+0.69 Hectares	-
Amenity Greenspace (Excluding verges)	+0.29 Hectares	-
Cemeteries and Disused Churchyards	+0.14 Hectares	Not Applicable
Provision for Children and Young People	-0.02 Hectares	No
Parks and Gardens	-0.02 Hectares	No
36 km sq Grid		
Natural & Semi-Natural Greenspace	-8.95 Hectares	Yes
Outdoor Sports Facilities	+1.50 Hectares	-
Village Halls	-2.56 Village Halls	Yes

5.50 Sawley

The figures provided in the table below for natural and semi-natural greenspace, outdoor sports and village halls include the village of Grantley (i.e. all those settlements present within the 36 km sq grid covering the area).

		Sufficient to support provision at minimum size standard
4 km sq Grid		
Allotments and Community Gardens	-0.10 Hectares	No
Amenity Greenspace (All)	+0.48 Hectares	-
Amenity Greenspace (Excluding verges)	+0.13 Hectares	-
Cemeteries and Disused Churchyards	+0.31 Hectares	Not Applicable
Provision for Children and Young People	+0.01 Hectares	-
Parks and Gardens	-0.02 Hectares	No
36 km sq Grid		
Natural & Semi-Natural Greenspace	-0.90 Hectares	Yes
Outdoor Sports Facilities	-1.23 Hectares	Yes
Village Halls	+0.84 Village Halls	-

5.51 Scotton

The figures provided in the table below for natural and semi-natural greenspace, outdoor sports and village halls include the villages of Killinghall and Ripley (i.e. all those settlements present within the 36 km sq grid covering the area).

		Sufficient to support provision at minimum size standard
4 km sq Grid		
Allotments and Community Gardens	-0.55 Hectares	Yes
Amenity Greenspace (All)	+0.94 Hectares	-
Amenity Greenspace (Excluding verges)	-1.75 Hectares	Yes
Cemeteries and Disused Churchyards	+0.82 Hectares	Not Applicable
Provision for Children and Young People	-0.14 Hectares	Yes
Parks and Gardens	-0.11 Hectares	No
36 km sq Grid		
Natural & Semi-Natural Greenspace	+42.97 Hectares	-

Outdoor Sports Facilities	+3.92 Hectares	-
Village Halls	+0.36 Village Halls	-

Please note that there is a degree of double counting in the Killinghall, Scotton and Ripley 36 km sq grid with that covering Bishop Monkton, Burton Leonard and Markington. The northern boundary of the grid includes the village of Burton Leonard.

5.52 Sharow

The figures provided in the table below for natural and semi-natural greenspace, outdoor sports and village halls include the City of Ripon (i.e. all those settlements present within the 36 km sq grid covering the area).

		Sufficient to support provision at minimum size standard
4 km sq Grid		
Allotments and Community Gardens	-0.27 Hectares	Yes
Amenity Greenspace (All)	-0.80 Hectares	Yes
Amenity Greenspace (Excluding verges)	-1.23 Hectares	Yes
Cemeteries and Disused Churchyards	+0.47 Hectares	Not Applicable
Provision for Children and Young People	-0.06 Hectares	Yes
Parks and Gardens	-0.05 Hectares	No
36 km sq Grid		
Natural & Semi-Natural Greenspace	+10.47 Hectares	-
Outdoor Sports Facilities	-1.44 Hectares	Yes
Village Halls	-0.06 Village Halls	No

The figure provided in the table above for Village Halls is based on the estimated population and current level of village hall provision in the 4 km sq grid covering Sharow. This is because the 36 km sq grid that includes the village also includes the City of Ripon. Ripon is classed as an urban area and the inclusion of the City's population would greatly exaggerate the level of need identified for village halls in Sharow.

5.53 Sicklinghall

The figures provided in the table below for natural and semi-natural greenspace, outdoor sports and village halls also include the villages of Follifoot, Kirk Deighton and Spofforth (i.e. all those settlements present within the 36 km sq grid covering the area).

		Sufficient to support provision at minimum size standard
4 km sq Grid		
Allotments and Community Gardens	-0.11 Hectares	No
Amenity Greenspace (All)	-0.02 Hectares	No
Amenity Greenspace (Excluding verges)	-0.30 Hectares	Yes
Cemeteries and Disused Churchyards	+0.36 Hectares	Not Applicable
Provision for Children and Young People	-0.03 Hectares	No
Parks and Gardens	-0.02 Hectares	No
36 km sq Grid		
Natural & Semi-Natural Greenspace	-2.12 Hectares	Yes
Outdoor Sports Facilities	+2.64 Hectares	-
Village Halls	+1.56 Village Halls	-

5.54 Skelton on Ure

The figures provided in the table below for natural and semi-natural greenspace, outdoor sports and village halls include the villages of Aldborough, Boroughbridge, Kirby Hill, Langthorne, Minskip and Roecliffe (i.e. all those settlements present within the 36 km sq grid covering the area).

		Sufficient to support provision at minimum size standard
4 km sq Grid		
Allotments and Community Gardens	-0.13 Hectares	No
Amenity Greenspace (All)	+0.10 Hectares	-
Amenity Greenspace (Excluding verges)	-0.32 Hectares	Yes
Cemeteries and Disused Churchyards	+0.35 Hectares	Not Applicable
Provision for Children and Young People	+0.04 Hectares	-
Parks and Gardens	-0.03 Hectares	No
36 km sq Grid		
Natural & Semi-Natural Greenspace	-8.95 Hectares	Yes
Outdoor Sports Facilities	+1.50 Hectares	-
Village Halls	-2.56 Village Halls	Yes

5.55 Staveley

The figures provided in the table below for natural and semi-natural greenspace, outdoor sports and village halls include the village of Minskip (i.e. all those settlements present within the 36 km sq grid covering the area).

		Sufficient to support provision at minimum size standard
4 km sq Grid		
Allotments and Community Gardens	-0.18 Hectares	Yes
Amenity Greenspace (All)	+0.29 Hectares	-
Amenity Greenspace (Excluding verges)	-0.20 Hectares	Yes
Cemeteries and Disused Churchyards	+0.12 Hectares	Not Applicable
Provision for Children and Young People	-0.00 Hectares	No
Parks and Gardens	-0.04 Hectares	No
36 km sq Grid		
Natural & Semi-Natural Greenspace	-1.84 Hectares	Yes
Outdoor Sports Facilities	-1.51 Hectares	Yes
Village Halls	+0.47 Village Halls	Yes

Please note that there is a degree of double counting in the Staveley 36 km sq grid with that covering Aldborough, Boroughbridge, Kirby Hill, Langthorne, Minskip, Roecliffe and Skelton on Ure. The northern boundary of the grid includes the Village of Minskip.

5.56 Whixley

		Sufficient to support provision at minimum size standard
4 km sq Grid		
Allotments and Community Gardens	-0.05 Hectares	No
Amenity Greenspace (All)	+1.65 Hectares	-
Amenity Greenspace (Excluding verges)	+0.74 Hectares	-
Cemeteries and Disused Churchyards	+0.38 Hectares	Not Applicable
Provision for Children and Young People	+0.10 Hectares	-
Parks and Gardens	-0.04 Hectares	No

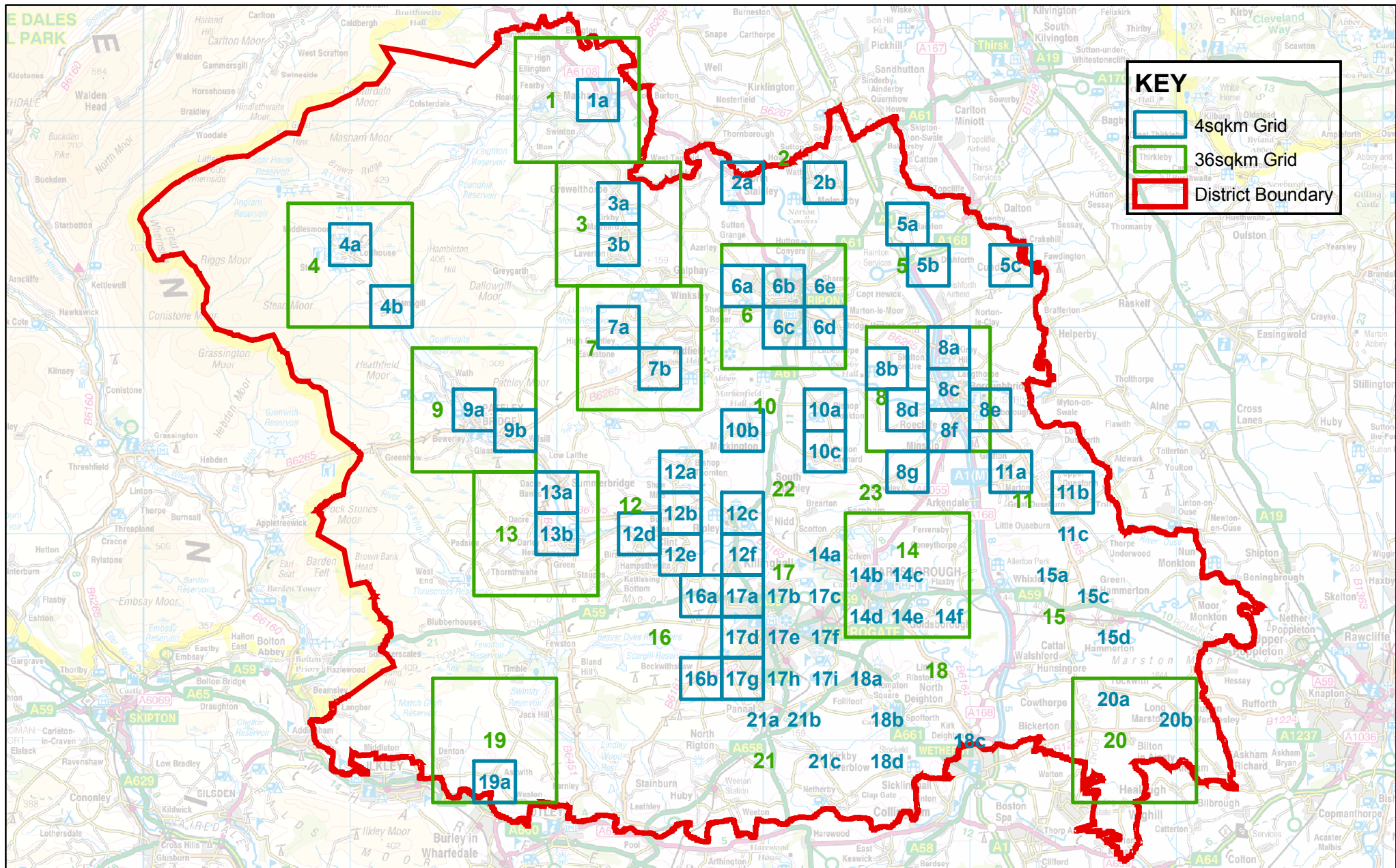
36 km sq Grid		
Natural & Semi-Natural Greenspace	-3.81 Hectares	Yes
Outdoor Sports Facilities	+3.02 Hectares	-
Village Halls	-0.38 Village Halls	No

6.0 NEXT STEPS

- 6.1 This evidence base report forms part of the Urban Areas Consultation¹³ taking place between 9 September and 4 November 2011. The purpose of the consultation is highlighted in Section 4.0 of this report. Following completion of the consultation exercise the Council will identify and assess site options for delivering new sports, recreation, open space and village hall facilities¹⁴. Sites that are considered to have potential to be allocated in the Sites & Policies DPD will be subject to further consultation with the public prior to their inclusion in the plan.
- 6.2 An allocation of land for open space and/or a village hall in the Sites and Policies DPD will provide certainty that, subject to scale and design, the principle of the land use is established. To allocate land in the Sites & Policies DPD for any new land uses, the Council must be able to demonstrate at examination that:
1. there is a clear need for the land use;
 2. the most appropriate site has been chosen and it is sustainable;
 3. any adverse impact likely to be caused by the proposal is outweighed by the need;
 4. the land can be delivered in terms of landowners support, no insurmountable site development constraints and funding; and
 5. appropriate public consultation has taken place about the process.
- 6.3 The lack of an allocation in the DPD for open space and/or village hall does not mean that these facilities cannot be developed during the plan period. Planning applications for new development, including open spaces can be submitted at any time and will be considered against the relevant planning policies of the development plan. Emerging planning policies would allow for the development of sites to deliver new open space and village hall facilities over the plan period (see paragraph 2.10). The Council will also continue to require developers of residential schemes to make adequate provision for open space within their development proposals, including housing sites allocated in the Sites & Policies DPD.

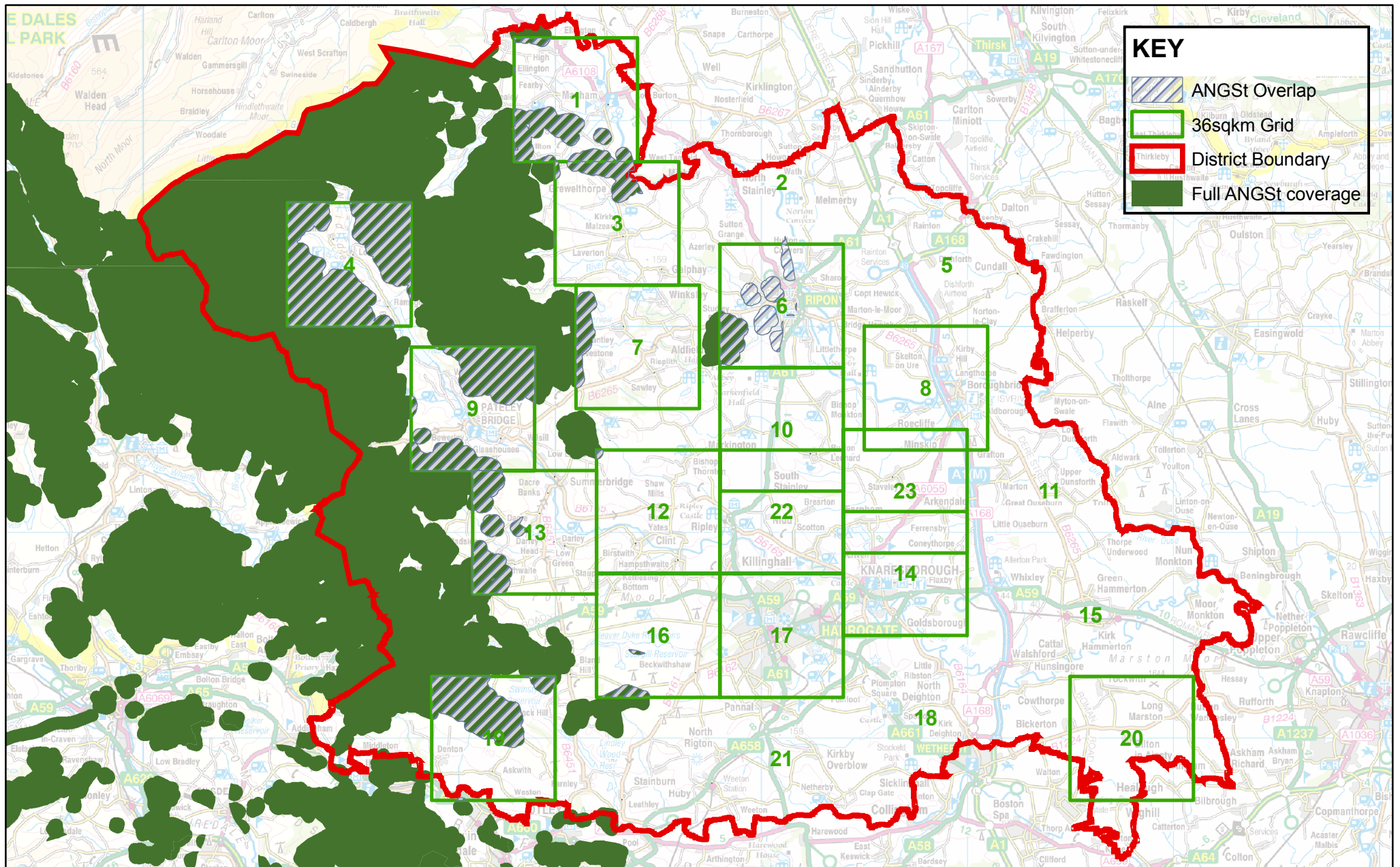
¹³ Details of the Urban Areas Consultation can be found on the Council's website at the following address: www.harrogate.gov.uk/ldfconsult

¹⁴ This process has already started in relation to the provision of new outdoor sports facilities for Harrogate Knaresborough and Ripon (Part 2 of this study) – available on the Council's website at the website address given above.



KEY

- 4sqkm Grid
- 36sqkm Grid
- District Boundary



Appendix 2: ANGSt overlap with 36 SQ KM Grid

APPENDIX 4: SPORT, RECREATION AND OPEN SPACE REQUIREMENTS (36 SQ KM GRID)

Grid Square	Settlement	Popn	Existing Open Space Provision (Ha)				Area Required to Meet Quantity Standard (Ha)			Difference Between Demand and Supply (Ha)			Requirement for New Open Spaces at Min Size (No. Spaces)		
			ANGST	NATGS	SPTS	CEMCH	NATGS	SPTS	CEMCH	NATGS	SPTS	CEMCH	NATGS (0.25 Ha)	SPTS (0.8 Ha)	CEMCH
1	Masham	2010	803.3629	1.5355	3.6109	N/A	5.427	3.2763	N/A	-3.8915	0.3346	N/A	-15.57	0.42	N/A
2	North Stainley, Melmerby, Wath	1262	4.5045	1.5493	1.8456	N/A	3.4074	2.05706	N/A	-1.8581	-0.2115	N/A	-7.43	-0.26	N/A
3	Grewelthorpe, Kirkby Malzeard	1926	350.8694	0.2982	1.5303	N/A	5.2002	3.13938	N/A	-4.9020	-1.6091	N/A	-19.61	-2.01	N/A
4	Lofthouse, Ramsgill	418	2531.5963	0.0531	0.7120	N/A	1.1286	0.68134	N/A	-1.0755	0.0307	N/A	-4.30	0.04	N/A
5	Rainton, Dishforth, Cundall	2017	0.0000	0.4153	3.4064	N/A	5.4459	3.28771	N/A	-5.0306	0.1187	N/A	-20.12	0.15	N/A
6	Ripon, Sharow	19381	711.4320	62.7945	27.2004	8.0339	52.3287	31.59103	9.6905	10.4658	-4.3906	-1.6566	41.86	-5.49	N/A
7	Grantely, Sawley	755	301.2585	1.1373	0.0000	N/A	2.0385	1.23065	N/A	-0.9012	-1.2307	N/A	-3.60	-1.54	N/A
8	Boroughbridge, Skelton on Ure, Kirby Hill, Rocliffe, Minskip, Aldborough	5562	0.0000	6.0656	10.5678	N/A	15.0174	9.06606	N/A	-8.9518	1.5017	N/A	-35.81	1.88	N/A
9	Pateley Bridge, Glasshouses	3219	1495.3326	0.0000	2.1667	N/A	8.6913	5.24697	N/A	-8.6913	-3.0803	N/A	-34.77	-3.85	N/A
10	Markington, Bishop Monkton, Burton Leonard	2390	0.0000	3.9161	5.5708	N/A	6.453	3.8957	N/A	-2.5369	1.6751	N/A	-10.15	2.09	N/A
11	Marton cum Grafton, Great Ouseburn, Little Ouseburn	1757	0.0000	6.9446	2.5117	N/A	4.7439	2.86391	N/A	2.2007	-0.3522	N/A	8.80	-0.44	N/A
12	Bishop Thornton, Burnt Yates, Birstwith, Hampsthwaite	3150	11.8235	0.0000	4.3091	N/A	8.505	5.1345	N/A	-8.5050	-0.8254	N/A	-34.02	-1.03	N/A
13	Summerbridge, Darley, Dacre, Dacre Banks	2923	765.7819	0.0401	3.7557	N/A	7.8921	4.76449	N/A	-7.8520	-1.0088	N/A	-31.41	-1.26	N/A
14	Knaresborough, Goldsborough	16749	0.0000	26.0430	19.5149	5.7167	45.2223	27.30087	8.3745	-19.1793	-7.7860	-2.6578	-76.72	-9.73	N/A
15	Whixley, Green Hammerton, Kirk Hammerton	2194	0.0000	2.1101	6.6003	N/A	5.9238	3.57622	N/A	-3.8137	3.0241	N/A	-15.25	3.78	N/A
16	Beckwithshaw, Killinghall Moor	2751	98.8355	23.0073	10.5725	N/A	7.4277	4.48413	N/A	15.5796	6.0884	N/A	62.32	7.61	N/A
17	Harrogate	80784	0.0000	134.7804	25.3281	15.865	218.1168	131.67792	40.392	-83.3364	-106.3498	-24.5270	-333.35	-132.94	N/A
18	Spofforth, Sicklinghall, Kirk Deighton, Follifoot	2235	0.0000	3.9161	6.2835	N/A	6.0345	3.64305	N/A	-2.1184	2.6405	N/A	-8.47	3.30	N/A
19	Askwith	595	1105.6598	0.0399	0.0000	N/A	1.6065	0.96985	N/A	-1.5666	-0.9699	N/A	-6.27	-1.21	N/A
20	Tockwith, Long Marston	2345	0.0000	0.4847	4.4270	N/A	6.3315	3.82235	N/A	-5.8468	0.6047	N/A	-23.39	0.76	N/A
21	Pannal, Kirkby Overblow	3133	0.0000	2.7338	1.4132	N/A	8.4591	5.10679	N/A	-5.7253	-3.6936	N/A	-22.90	-4.62	N/A
22	Killinghall, Ripley, Scotton	3669	0.0000	52.8806	9.9001	N/A	9.9063	5.98047	N/A	42.9743	3.9196	N/A	171.90	4.90	N/A
23	Staveley	1642	0.0000	2.5913	1.1682	N/A	4.4334	2.67646	N/A	-1.8421	-1.5083	N/A	-7.37	-1.89	N/A

Key:	
ANGSt	Accessible Natural Greenspace Standard
NATGS	Natural and Semi-Natural Greenspace (including Urban Woodlands)
SPTS	Outdoor Sports Facilities
CEMCH	Cemetries, Disused Churchyards and other Burial Grounds

APPENDIX 5: VILLAGE HALL REQUIREMENTS (36 SQ KM GRID)

Grid Square	Settlement	Popn	Existing Village Hall Provision	No. Required to Meet Quantity Standard	Difference Between Demand and Supply
1	Masham	2010	2	3.09	-1.09
2	North Stainley, Melmerby, Wath	1262	2	1.94	0.06
3	Grewelthorpe, Kirkby Malzeard	1926	4	2.96	1.04
4	Lofthouse, Ramsgill	418	3	0.64	2.36
5	Rainton, Dishforth, Cundall	2017	4	3.10	0.90
6e	Sharow*	686	1	1.06	-0.06
7	Grantely, Sawley	755	2	1.16	0.84
8	Boroughbridge, Skelton on Ure, Kirby Hill, Roecliffe, Minskip, Aldborough	5562	6	8.56	-2.56
9	Pateley Bridge, Glasshouses	3219	2	4.95	-2.95
10	Markington, Bishop Monkton, Burton Leonard	2390	4	3.68	0.32
11	Marton cum Grafton, Great Ouseburn, Little Ouseburn	1757	3	2.70	0.30
12	Bishop Thornton, Burnt Yates, Birstwith, Hampsthwaite	3150	3	4.85	-1.85
13	Summerbridge, Darley, Dacre, Dacre Banks	2923	7	4.50	2.50
14f	Goldsborough*	361	0	0.56	-0.56
15	Whixley, Green Hammerton, Kirk Hammerton	2194	3	3.38	-0.38
16	Beckwithshaw, Killinghall Moor	2751	2	4.23	-2.23
17	Harrogate	80784	N/A	N/A	N/A
18	Spofforth, Sicklinghall, Kirk Deighton, Follifoot	2235	5	3.44	1.56
19	Askwith	595	3	0.92	2.08
20	Tockwith, Long Marston	2345	2	3.61	-1.61
21	Pannal, Kirkby Overblow	3133	1	4.82	-3.82
22	Killinghall, Ripley, Scotton	3669	6	5.64	0.36
23	Staveley	1642	3	2.53	0.47

* Please Note: the results for Sawley and Goldsborough are based on the estimated population and current level of village hall provision in the 4 km sq grids covering these villages. This is because the 36 km sq grids that include these villages also include Ripon City and Knaresborough Town respectively. These are both classed as urban areas and the inclusion of their respective populations would greatly exaggerate the level of need identified for village halls in Sawley and Goldsborough.

APPENDIX 6: COMMUNITY ACCESS TO SCHOOL SPORTS FACILITIES

Introduction

The Council set up a Sports Working Group, made up of representatives from sports clubs, sports managing bodies and local residents, to discuss the Council's approach to sports provision in the District, with a particular focus on Harrogate, Knaresborough and Ripon. The working group has identified and discussed a number of options for improving sports provision, one of which is to explore the possibility of increasing community usage of school sports facilities.

The Sports Working Group asked the Council to collect information on current community usage of school sports facilities and the potential to increase the level of access in the future. In order to determine the viability of this option the Council, working in partnership with the Harrogate School Sports Partnership, sent a questionnaire to 86 primary and secondary schools in the District (excluding independent schools) in October 2010. The aim of the questionnaire was to provide the Council and School Sports Partnership with a clearer view of the opportunity, desirability and practicality of increasing community usage of school sports facilities.

A total of 46 schools (a response rate of 53%) responded to the questionnaire, including 6 secondary schools and 40 primary schools, based in a variety of different settlements providing a good geographic spread across urban and rural parts of the District.

Of particular relevance to this study, the questionnaire contained the following questions related to the existing level of access to school sports facilities by the community, barriers to increasing community use and identifying opportunities to increase community access to school facilities:

1. Does the school currently allow community use of their sports facilities?

Yes	<i>Please go to Question 4</i>
No	<i>Please go to Question 2</i>

2. What are the reasons for not currently allowing community use of school sports facilities? (Tick all that apply)

Never been considered	
Concerns over security	
Inappropriate access arrangements	
Inadequate changing facilities	
Impact on school use of facilities	
Impact on neighbouring properties	
Cost (e.g. payment of caretaker)	
No support from school board/governors	

Other, please specify:

--

3. **Would your school be interested in establishing community use of its sports facilities in the future?**

Yes	<input type="checkbox"/>
No	<input type="checkbox"/>

Please go to Question 7

Thank you for taking the time to complete the questionnaire.

4. **What are the current arrangements for community use of the schools sports facilities?**

What sports clubs/groups use the facilities?								
On what days/times are sports facilities open to community use? (Tick all that apply)		Mon	Tue	Wed	Thu	Fri	Sat	Sun
	08.00-12.00							
	12.00-16.00							
	After 16.00							
What are the conditions of community usage (e.g. financial contribution, assistance with maintenance, coaching support, running of after school clubs etc)?								

5. **Are there any opportunities to increase the level of community usage of the school's sports facilities during the next 3 years?**

Yes	<input type="checkbox"/>
No	<input type="checkbox"/>

6. **What are the greatest barriers to increasing community use of school sports facilities?** (Tick all that apply)

Never been considered	<input type="checkbox"/>
Concerns over security	<input type="checkbox"/>
Inappropriate access arrangements	<input type="checkbox"/>
Inadequate changing facilities	<input type="checkbox"/>
Impact on school use of facilities	<input type="checkbox"/>
Impact on neighbouring properties	<input type="checkbox"/>

Cost (e.g. payment of caretaker)	
No support from school board/governors	

Other, please specify:

- 7. What are the procedures that need to be followed in order to secure increased community use of school sports facilities (e.g. information requirements, approval of school board, NYCC agreement etc)?**

- 8. Approximately how long would it take to work through the procedures you identified in answering Question 11?**

Summary of Responses

Below is a summary of the responses to these questions, followed by a full copy of the responses on subsequent pages.

- All of the secondary schools that responded to the questionnaire already allow community use of their sports facilities.
- 48% of the primary schools that responded to the questionnaire currently allow some community use of their sports facilities (although the number, range and quality of facilities available tend to be significantly less than those at secondary schools).
- Schools outlined a number of reasons for not allowing community use of their sports facilities, listed below with the most identified at the top followed by the others in descending order of importance:
 1. Concerns over security
 2. Inadequate changing facilities and cost (e.g. payment of caretaker)
 3. Inappropriate access arrangements
 4. Impact on school use of facilities and impact on neighbouring properties
 5. Never been considered

Additional comments included issues related to the lack of facilities, the size and poor quality of existing facilities and that there was no demand for community use. A number of primary schools also highlighted the fact that they did not have any sports facilities of their own and that they used village facilities instead.

- 61% of those primary schools that said that they did not currently allow community use of their sports facilities said they would not be interested in establishing community use in the future.

- Community use of sports facilities in primary schools that allow it is restricted to after closing hours of the school during weekdays (i.e. after 4pm). 7 primary schools identified that they allow their facilities to be used on Saturdays and/or Sundays.
- Similar to the primary schools, the secondary schools did not allow community use of their sports facilities during weekdays until after the school closed. All of the secondary schools allowed some community use of their facilities Saturdays and Sundays. Uses were predominantly of a sporting nature making full use of the equipment and space dedicated to individual sports e.g. cricket, athletics and swimming. Conditions of community usage included:
 - Hourly rate of hire
 - In lieu of coaching
 - Fee for use of equipment
 - Fee to cover cost of caretaker/maintenance
 - Access only after extra curricular clubs had finished
- Of those primary schools that answered question five, 60% felt there were no opportunities to increase community use of sports facilities at their school. In contrast, 67% of secondary schools stated that there were opportunities to increase community use of facilities.
- Of those primary and secondary schools who answered question six, the following issues were highlighted as the greatest barriers to increasing community use of school sports facilities (in order of decreasing importance):
 1. Inadequate changing facilities
 2. Cost (e.g. payment of caretaker)
 3. Concerns over security, impact on school use of facilities and impact on neighbouring properties
 4. Inappropriate access arrangements

In addition the following issues were identified:

- Extensive community use already
 - Inadequate facilities
 - Insurance and liability issues
 - No extra space
 - Time needed to organise it
 - Agreement needed from governing body
 - Parking arrangements
 - Just not needed
- Respondents from both primary and secondary schools gave a mixed response to the procedures that would need to be followed in order to increase community use.

Q4: What are the current arrangements for community use?

School	Primary/Secondary	Who uses the facilities?	Mon	Tue	Wed	Thur	Fri	Sat	Sun	Conditions of use?
Harrogate Schools										
Bilton Grange	Primary School									
Grove Road	Primary School	Brazilian soccer, dance, keep fit club, ballroom dancing.	After 4pm	After 4pm	After 4pm	After 4pm	After 4pm	8-12pm & 12-4pm	8-12pm & 12-4pm	Brazilian football - also runs after school club. Others - financial contribution.
Harrogate Grammar	Secondary School	Harrogate Volleyball, Pannal sports, Eagles Netball, Police football, Harrogate Racquets.	After 4pm	After 4pm	After 4pm	After 4pm	After 4pm	After 4pm	After 4pm	A mixture. Hired. In lieu of coaching.
Harrogate High School	Secondary School	Harrogate Hornets, Harrogate Badminton, Harrogate Harriers Athletics club, Harrogate Brazilian Soccer School, Harrogate Railway.	After 4pm	After 4pm	After 4pm	After 4pm	After 4pm	8-12pm & 12-4pm	8-12pm & 12-4pm	
Hookstone Chase	Primary School									
New Park	Primary School	None at present.								Financial Contribution.
Richard Taylor	Primary School	Youth club and scouts use field during summer. Bilton Gala use field in May.	After 4pm	After 4pm	After 4pm	After 4pm	After 4pm			The school has an established leasing policy but works with community groups to meet need.
Starbeck	Primary School	Harrogate Railway Football.						8-12pm		Assist with maintenance.
St Aidsan CE High School	Secondary School	St Marks Church, Raiders basketball, Harrogate Gateway, Disability football, Pannal Junior football, Pannal Cricket club, Yorkshire Cricket club, DTA - Badminton, football - staff.	After 4pm	After 4pm	After 4pm	After 4pm	After 4pm	8-12pm	8-12pm	Hire charges per hour, after extra curricular clubs have finished.
St Joseph's RC	Primary School	Before and after school club. School clubs eg. Fitness club, keep fit, yoga for adults.	After 4pm	After 4pm	After 4pm	After 4pm	After 4pm			Before and after school club pay contributions to costs. Keep fit/yoga also pay financial contribution. After school re clubs free.
Woodlands Junior	Primary School	Water babies swimming, Tiddlywink swimming club and Harrogate Railway junior football.	8-12pm		8-12pm & after 4pm				8-12pm	Letting fee.
Woodfield	Primary School	Football, karate.	After 4pm			After 4pm				Financial contributions.
Knaresborough Schools										
Aspin Park	Primary School	Yoga, Aspin Gaspers (men's keep fit), dance classes x3. After school Little athletes, football x3; dance club x2.	12-4pm & after 4pm	12-4pm & after 4pm	12-4pm & after 4pm	12-4pm & after 4pm	12-4pm & after 4pm	8-12pm		Football after school - coaching support. After school clubs 3.30-5pm. Lettings - financial.
Knaresborough St John's CE	Primary School	Knaresborough Celtic FC - use the field. Pilates, yoga and Harrogate Symphony Orchestra - use the school hall.	After 4pm	After 4pm	After 4pm	After 4pm	After 4pm	All day	All day	Fees in line with the school letting policy.
St Mary's Primary	Primary School									
Ripon Schools										
Moorside Infants School	Primary School	Karate						8-12pm		Financial contribution.
Ripon Cathedral CE	Primary School	Gymnastics, multi sports, football, schools out (dance and drama).	After 4pm		After 4pm		After 4pm			Holiday time pay but after school external providers don't.
Ripon Grammar	Secondary School	Badminton, cricket, netball, rock climbing, swimming clubs, beginner swimming lessons, rock it ball.	After 4pm	After 4pm	After 4pm	After 4pm	After 4pm	8-12pm & 12-4pm	8-12pm & 12-4pm	Booking fee to cover cost of caretaker etc. Coaching support within lessons plus running courses for our students, involvement of boarders in clubs.
Rural Schools										
Askwith	Primary School									
Birstwith CE	Primary School	Occasional use by uniform organisations.								When after school club is not running.
Bishop Monkton CE	Primary School	Cubs, scouts, dance, gymnastics, basket ball, netball, youth club, and athletics.	After 4pm	After 4pm	After 4pm	After 4pm	After 4pm			Use the village facilities.
Boroughbridge High	Secondary School	Middlesborough Football Club, Yorkshire Cricket, North Yorkshire Netball, junior football coaching, Knaresborough Celtic Football and Boroughbridge Football Clubs, community football groups, community badminton players, dance studio (zumba and pilates).	After 4pm	After 4pm	After 4pm	After 4pm	After 4pm	8-4pm & after 4pm	8-4pm & after 4pm	The community usage pays for staffing and maintenance of the facilities. Each facility has an hourly rate of hire.
Burnt Yates CE	Primary School									
Burton Leonard CE	Primary School									
Dacre Braithwaite CE	Primary School	Offer not taken up.						8-4pm & after 4pm	8-4pm & after 4pm	School letting policy.
Dishforth CE	Primary School									
Farnley CE VA	Primary School									
Glasshouses	Primary School	After school usage - PTA and A.S.C	After 4pm	After 4pm	After 4pm	After 4pm	After 4pm			Via letting agreement to the PTA for supervised usage of parents/children after school hours.
Great Ouseburn	Primary School									
Kettlesing Felliscliffe	Primary School									
Kirby Hill	Primary School									
Kirk Hammerton CE	Primary School	Extended school events.								A contribution to grounds maintenance costs.
Lofthouse Fountains Earth	Primary School									
Markington CE	Primary School									
Nidderdale High School	Secondary School	Duel use with the leisure centre for the sports hall and outdoor facilities. School uses them until 5.30pm then usage belongs to the leisure centre.	After 5.30pm	After 5.30pm	After 5.30pm	After 5.30pm	After 5.30pm	8-4pm & after 4pm	8-4pm & after 4pm	An old policy exists which needs updating. It is more to do with use of equipment.
Num Monkton FPS	Primary School									
Pannal	Primary School	Footnet sports (school holidays), after school clubs every night.	After 4pm	After 4pm	After 4pm	After 4pm	After 4pm			Pay rent per hour in school holidays. After school club either a voluntary contribution if staff led or cost if coach brought in.
Ripley Endowed School	Primary School									
Roecliffe CE	Primary School									
Scotlon Lingerfield	Primary School									
Sharow CE	Primary School									
Spofforth CE	Primary School	Karate club.		After 4pm						After school club - kids pay.
Staveley CP	Primary School									
St Cuthbert's Pateley Bridge	Primary School									
St Joseph's RC Bishop Thornton	Primary School									
St Peter's Brafferton CE VA	Primary School	Occasional use by dance teacher, parents netball club.	After 4pm		After 4pm	After 4pm	After 4pm			By arrangement. Letting policy.

Q5: Are there opportunities to increase community use?

School	Primary/Secondary	Yes	No
Harrogate Schools			
Bilton Grange	Primary School	0	1
Grove Road	Primary School	0	1
Harrogate Grammar	Secondary School	1	0
Harrogate High School	Secondary School	1	0
Hookstone Chase	Primary School	0	1
New Park	Primary School	1	0
Richard Taylor	Primary School	1	0
Starbeck	Primary School	1	0
St Aidans CE High School	Secondary School	0	1
St Joseph's RC	Primary School	0	1
Woodlands Junior	Primary School		
Woodfield	Primary School	1	0
Knarborough Schools			
Aspin Park	Primary School	0	1
Knarborough St John's CE	Primary School	1	0
St Mary's Primary	Primary School		
Ripon Schools			
Moorside Infants School	Primary School	0	1
Ripon Cathedral CE	Primary School	1	0
Ripon Grammar	Secondary School	1	0
Rural Schools			
Askwith	Primary School		
Birstwith CE	Primary School	0	1
Bishop Monkton CE	Primary School	0	1
Boroughbridge High	Secondary School	1	0
Burnt Yates CE	Primary School		
Burton Leanard CE	Primary School		
Dacre Braithwaite CE	Primary School		
Dishforth CE	Primary School		
Farnley CE VA	Primary School	0	1
Glasshouses	Primary School	0	1
Great Ouseburn	Primary School		
Kettlesing Felliscliffe	Primary School		
Kirby Hill	Primary School		
Kirk Hammerton CE	Primary School	1	0
Lofthouse Fountians Earth	Primary School		
Markington CE	Primary School		
Nidderdale High School	Secondary School	0	1
Num Monkton FPS	Primary School		
Pannal	Primary School	1	0
Ripley Endowed School	Primary School		
Roeclyffe CE	Primary School		
Scotton Lingerfield	Primary School		
Sharow CE	Primary School		
Spofforth CE	Primary School	0	1
Staveley CP	Primary School		
St Cuthbert's Pateley Bridge	Primary School		
St Joseph's RC Bishop Thornton	Primary School		
St Peter's Brafferton CE VA	Primary School	0	1

Q6: What are the greatest barriers to increasing community use?

Never considered	Security	Access	Changing Facilities	Impact on School Use	Impact on Neighbours	Cost	Lack of Support	Other
								Inadequate facilities.
		1			1			Community use of all 3 halls, 6 days a week so no extra space/capacity.
			1		1	1		
				1				
		1	1	1	1	1		Could be possible but would have to be carefully planned.
	1							
	1			1	1	1		
	1		1			1		Parking arrangements and insurance concerns. We only really have the school hall and that is in use every evening until 6pm and yoga/adult clubs until 8.30pm, 2 or 3 nights a week.
		1						Our facilities are used to capacity.
			1					
				1	1			Extensive community use at present.
		1		1		1		Time needed to organise it.
								PFI school.
				1	1	1	1	Time - school use gets priority, plus the boarders use the facility on an evening.
		1	1	1		1	1	Enough time and facilities to accommodate all user groups.
			1					No changing facilities.
								Lack of facilities.
	1		1	1	1	1	1	Lack of facilities on site. Insurance. Liability issues.
				1		1		
								No real sports facilities other than a small hall.
								No barriers, just not needed. The community has a sports hall, field and cricket/football pitches of its own - better than our field.

Q7-8: What procedures would need to be followed and how long would it take to increase community use?

School	Primary/Secondary	Procedures	How long would it take
Harrogate Schools			
Bilton Grange	Primary School	Not known.	
Grove Road	Primary School	Already fully used - no capacity to increase usage.	
Harrogate Grammar	Secondary School	All clubs need to have necessary documents regarding CRB etc. Public liability etc.	Variable.
Harrogate High School	Secondary School		
Hookstone Chase	Primary School		
New Park	Primary School	Governors agreement, legal services advice.	3 months.
Richard Taylor	Primary School	Agreement from Governing Body and leasing agreement. Information on insurance details would be needed.	Dependent on proposals?
Starbeck	Primary School	Approval of head/governors.	3-4 weeks
St Aidans CE High School	Secondary School	Through school governors.	3 months.
St Joseph's RC	Primary School	Approval of governors, increased insurance?	1 year.
Woodlands Junior	Primary School		
Woodfield	Primary School	Letting agreement, health and safety documentation.	2 weeks.
Knarborough Schools			
Aspin Park	Primary School		
Knarborough St John's CE	Primary School	Need to sign the school letting policy and agree to the costs. Need to have relevant	About one week.
St Mary's Primary	Primary School		
Ripon Schools			
Moorside Infants School	Primary School	Time to look into it. Organising fees, locking/unlocking facilities, cleaning etc.	Not known.
Ripon Cathedral CE	Primary School	PFI agreement.	
Ripon Grammar	Secondary School	Approval of premises manager. Must be after lesson times and school clubs.	Already in place - no time at all.
Rural Schools			
Askwith	Primary School	A successful capital build project link, the LA.	2-3 years.
Birstwith CE	Primary School	Village has adequate community sports facilities, so it is not felt that there is a need for increased community use of our school facilities.	
Bishop Monkton CE	Primary School	Need a bigger hall.	
Boroughbridge High	Secondary School	NYCC agreements, bookings (block bookings), information collation and evaluation.	A month? Evaluation and monitoring would be a continual ongoing process.
Burnt Yates CE	Primary School		
Burton Leonard CE	Primary School	Funding for locking and unlocking the grounds. NYCC agreement and further information.	Not known.
Dacre Braithwaite CE	Primary School	School's letting policy available to anyone.	A phone call.
Dishforth CE	Primary School		
Farnley CE VA	Primary School		
Glasshouses	Primary School		
Great Ouseburn	Primary School		
Kettlesing Felliscliffe	Primary School		
Kirby Hill	Primary School		
Kirk Hammerton CE	Primary School	Governer's approval, letting arrangements.	
Lofthouse Fountains Earth	Primary School		
Markington CE	Primary School		
Nidderdale High School	Secondary School		
Num Monkton FPS	Primary School		
Pannal	Primary School	Apply to school via headteacher, school governors.	Approximately 2 months.
Ripley Endowed School	Primary School		
Roecliffe CE	Primary School		
Scotton Lingerfield	Primary School		
Sharow CE	Primary School	We would be more than happy for school to be used for future village playschemes.	
Spofforth CE	Primary School		
Staveley CP	Primary School		
St Cuthbert's Pateley Bridge	Primary School		
St Joseph's RC Bishop Thornton	Primary School		
St Peter's Brafferton CE VA	Primary School	Council approval.	