

Harrogate Borough Council

Outdoor Sports Strategy

April 2013

Summary Conclusions and Recommendations



*Neil Allen Associates Registered Office:
20 Brook Road, Lymm, Cheshire, WA13 9AH*

*A limited company, registered in
England and Wales no. 6165280*

1. Summary Conclusions and Recommendations

Introduction

Neil Allen Associates was commissioned in April 2012 to produce an outdoor sports strategy for Harrogate Borough. The strategy updates the area based update and supplement to the Playing Pitch Assessment and Strategy (PPS) that was completed in 2007 and built upon the initial strategy that was produced in 2004.

This outdoor sports strategy takes into account the changing sporting landscape as well as the potential impact of population growth and ensures that the evidence base relating to outdoor sports facilities is relevant and reflective of sporting priorities in the Borough. It provides an understanding of the adequacy of pitch and outdoor sports provision at a local settlement level, as well as across Harrogate Borough as a whole.

The key drivers for the preparation of this strategy are;

- to inform decision making on the need for new and enhanced pitch provision;
- to ensure that there is an up to date outdoor sports assessment in place to support the ongoing development of the local planning framework, including the need for new allocations for sport and recreation facilities;
- to examine the impact of potential increases in participation in sport and active recreation across the borough;
- to help maximize the use of existing resources, including exploring the role that school sites can play in the overall delivery of outdoor sports facilities in the borough;
- to ensure that the pitch stock is tailored to meet changing demands and that the quality of facilities is sufficient to meet needs;
- guide a strategic and innovative approach to the delivery of playing pitches in the district linking with local, regional and National Governing Body priorities and in the context of the challenging financial environment; and
- provide a strategic context for any funding opportunities that arise.

The vision for the strategy is to create;

'An accessible, high quality and sustainable network of outdoor sports facilities, which provides local opportunities for participation by all residents of the borough at all levels of play from grassroots to elite'.

To achieve the vision, the strategy seeks to ensure that;

- there are sufficient pitches and courts to meet demand for both matches and training;
- facilities are of the required quality to cater for the needs of all participants; and

- opportunities for club development and increases for participation at all levels, including both grass roots and elite are maximised.

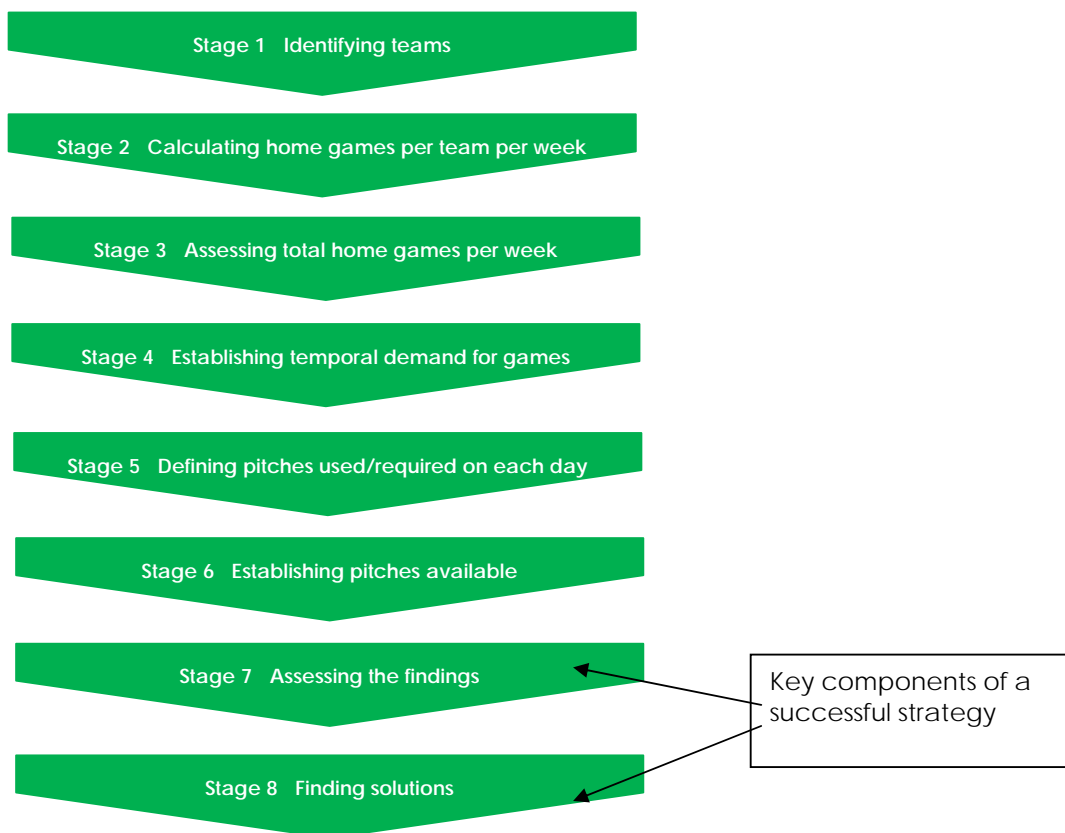
The strategy will contribute towards the achievement of many wider corporate Harrogate Borough Council objectives and those of key partners.

Methodology

This strategy evaluates the adequacy of provision and the priorities for action for football, cricket, rugby union, rugby league, hockey, tennis and croquet. These sports have been chosen because they are important in the context of Harrogate Borough. The strategy has been developed in line with *'Towards a Level Playing Field: A Manual for the Production of a Playing Pitch Strategy'* (Sport England, 2003) (TaLPF).

Figure E1 summarises the key stages of this methodology which broadly cover the issues of supply and demand. While stages one to six are largely numerical calculations, designed to evaluate the current supply and demand, it is steps 7 and 8, the evaluation of issues and solutions, which are the essential components of a successful strategy.

Figure E1 - The key stages of the Playing Pitch Methodology



TaLPF is currently being updated and a revised methodology is likely to be published in 2013. Where possible, changes anticipated to be included within the new methodology have been taken into account in the preparation of this document.

The approach taken in the development of this strategy was as follows;

Demand (Steps 1 – 5)

A full audit of teams playing or wishing to play within Harrogate Borough has been undertaken. This was supplemented with a consultation exercise to provide full understanding of the issues and challenges currently experienced. This comprised:

- distribution of a mixture of postal and electronic surveys to clubs;
- distribution of surveys to all schools;
- attendance at a meeting with representatives of football across the Borough especially configured to inform the preparation of this strategy;
- additional telephone and email consultations with secretaries of leagues;
- email and telephone discussions with Parish and Town Councils;
- face to face and telephone discussions with NGBs to discuss key issues and priorities;
- discussions with officers of Harrogate Borough Council; and
- discussions with other external stakeholders including Sport England.

Supply (Step 6)

A full audit of the supply of playing fields is an essential component of an outdoor sports strategy. A detailed audit of all facilities across the Borough was compiled by:

- analysing the audit of playing fields and open space compiled for the 2008 PPS;
- reviewing NGB data on pitches and the Sport England Active Places tool;
- a detailed survey to all schools and analyzing the findings of the sports club survey and league secretary consultation;
- engaging with Parish and Town Councils to understand provision in their control;
- consultation with other potential key providers;
- undertaking non technical site visits (in line with the Sport England Matrix) to all public playing fields and a sample of school sites;
- consulting with Grounds Maintenance staff; and
- carrying out internet searches and local consultation.

Strategy Development (Stages 7 and 8)

Following the collation of supply and demand data, calculations were undertaken to evaluate the adequacy of pitches in the borough. These calculations, alongside the key issues arising from consultations, drive the priorities of the strategy and the actions that emerge from these priorities. Extensive scenario testing was also included to provide a full picture of the adequacy of provision in different parts of Harrogate District.

Artificial pitches are increasingly being used to meet demand for pitch sports. To acknowledge this, the adequacy of AGPs has been evaluated using the Sport England Facility Planning Model (FPM). This work was undertaken by Sport England and supplied to NAA to inform the strategy document.

Summary of Key Issues

The key issues arising through the assessment of each sport are set out in the section that follows.

Key issues to address – Football

- Active People surveys indicate that participation is above national averages, although below Yorkshire regional averages. FA comparison with similar authorities however demonstrates that there is scope to increase the amount of participation in the district, as Harrogate is ranked relatively poorly in terms of the number of teams generated when measured against similar authorities.
- There has however been an increase in demand for football since the 2008 Playing Pitch Strategy. This increase is all junior teams and there has been a slight decline in the number of adult and mini football teams playing. This has been met in part by the reconfiguration of some existing playing fields.
- Despite some action since the 2004 and 2008 strategies, clubs remain dissatisfied and only 21% are happy with the pitch stock. 40% of clubs feel that pitch provision inhibits club development and this is attributed to a variety of factors including quality and changing facilities. Only 13% indicate that they have problems with the amount of pitches (although these are all large clubs with several teams).
- Modelling reveals that there are significant surpluses of adult pitches across the district, with circa 22 pitches spare on a peak day. There are also surplus mini pitches (33) but shortfalls of junior pitches. Reflecting the variety of concerns raised by clubs, these headline figures however disguise a multitude of issues, including the poor quality of some pitches, geographical differences and the role of school and cricket clubs in providing football pitches. While the overall amount of pitches is sufficient in most parts of the district, pressures are high in North East Harrogate District and Ripon. In contrast, there are high numbers of pitches in Harrogate.
- If cricket clubs were to withdraw their pitches (due to the impact on the quality of the outfield, supply would be much more closely matched with demand (particularly in more rural parts of the district). There are also several school sites which are currently meeting the needs of clubs but that do not offer security of tenure for these clubs (these are primarily in the more urban parts of the district, as well as in Boroughbridge).
- The spread of demand also means that while demand is relatively high at peak times, many pitches receive quite a lot of use outside of this which generates additional wear and tear. The amount of usage also varies significantly between sites and some sites are not used, while others are used significantly.
- The quality of existing pitches is variable and while there are some high quality facilities there are issues with surfaces, car parking, quality of equipment and changing accommodation. Drainage is also a significant issue, particularly in Harrogate and there are clear differences in the perception of pitch quality across the district.
- When taking into account the quality of pitches, there is a clear issue and supply is

Key issues to address – Football

much more closely matched with demand. This is particularly true of Harrogate, where the bulk of the poorer pitches are located. When excluding poorer quality pitches there are shortfalls of provision in Ripon, North East Harrogate District and Nidderdale and there are few pitches surplus in any areas.

- Adding to these issues, several clubs are dispersed across multiple sites many of which are poor quality. This is not beneficial to club development.
- The population of Harrogate District is ageing, and the propensity of residents to participate in football is therefore low, and this will become even more apparent over the strategy period. While the district will see population growth, the impact of this is negated to an extent by the change in the population profile. Casual and more recreational play is therefore likely to decline.
- However the larger more committed / developmental clubs all indicated that they are seeking to further increase participation. Pressures on pitches, which are already only just sufficient to meet demand, are therefore likely to grow.
- As well as facilities for matches, access to training pitches is also a significant barrier for clubs and most train on their match pitches. Although there are 9 artificial pitches, only three are accessible to the community and only two are 3g pitches (one of which is not currently accessible).
- The intended development of 9v9 football by the FA will bring requirements for a new type of pitch to the district – there will be a requirement to consider how and if this is to be implemented. This will place further pressures on small sided pitches.
- There are several pitches in the district that have previously been used as pitches and are no longer used for this purpose, as well as pitches that appear to be derelict.
- There are opportunities for improved partnership working across the district, to promote a more strategic approach to provision. The FA, leagues and clubs identified the need to improve communication and to ensure that facilities provided reflect the needs of clubs and of football development.
- The cost of participating was highlighted as a key issue by many clubs and a lack of volunteers and coaches was also seen as detrimental to ongoing football development.
- There are no issues identified for American Football. There are no existing facilities and no evidence of demand.

Key issues to address – Cricket

- Participation in cricket has increased since the previous playing pitch strategy, with particular growth in the junior form of the game. Cricket is a particularly popular sport in the borough, with participation levels significantly above both national and regional averages.
- Reflecting this, modelling reveals that the amount of cricket facilities is very closely matched with demand. On a peak day, calculations reveal that there are circa 2 pitches surplus. Analysis of site by site capacity suggests that there are no pitches that are not used on a peak day, but there is some potential to accommodate additional play at just 10 sites. This means that supply is very closely balanced with demand. Provision in the more built up areas is particularly limited, while clubs based in the north of the borough have the highest levels of spare capacity.
- Added to this, most sites are also heavily used midweek due to the growing number of junior teams that are run. It is evident that many of the larger clubs are nearing capacity and this is reflected in both the availability of pitches and the amount of use that wickets receive. In contrast, some of the smaller clubs have spare capacity midweek and are able to accommodate additional play. Many larger clubs are renting overspill facilities from smaller clubs to ensure that they are able to accommodate their fixtures and it is also noticeable that there is some use of school pitches.
- Calculations reveal that population growth alone will have little impact upon the demand for cricket pitches. Many clubs have however indicated that they wish to increase the number of teams they are running. Such increases would place greater pressures on cricket pitches. Most of the clubs with aspirations to increase the amount of teams playing at the site are those that are already at or approaching capacity. Initiatives to build participation in cricket through other new forms of the game (including Last Man Standing) and through the development of school club links may have further impact on increasing participation. There is therefore very little flexibility in the current pitch stock and this will become further constrained as participation grows. Longer term, a lack of facilities may inhibit the growth of some clubs.
- The high demands placed on the stock of facilities means that the quality of provision is particularly important and both the square and outfield must be able to sustain several games per week – the quality of grounds maintenance is therefore particularly important. The quality of existing pitches is high, although some clubs refer to the impact that the high levels of use are having on the quality of their facility. Several pavilions are of poor quality and some site specific pitch related issues are also identified.
- In addition to access to pitches for matches, clubs also reference the importance of facilities for training. The league highlight the need for additional indoor training facilities and several clubs also raise concerns about a lack of access to training facilities.

Key issues to address – Rugby Union

- Modelling and consultation reveal that when taking into account all rugby pitches there are sufficient pitches to meet peak time demand, although not all are currently available for community use. Furthermore, the nature of rugby, being a club based sport, means that satellite facilities inhibit the culture of club development. This ethos means that facilities play a big part in the success of the rugby club.
- Although there are only three rugby clubs in the district, foundations for rugby are strong and all three clubs have aspirations to increase participation with the potential for a minimum of five teams over the next couple of years. Clubs are already thought to be restricting the number of juniors that are taken into the club due to a lack of facilities and a lack of appropriate facilities. Several club specific issues have emerged, specifically.
- Harrogate RUFC are at capacity on their existing site, and even with the use of Harrogate High School are struggling to accommodate all of their teams. The club have relocation plans which would see the provision of additional pitches as well as a new clubhouse.
- Ripon RUFC is also nearing capacity however the club do not have security of tenure on their current pitches and the future of the club is therefore uncertain. The club has aspirations to secure new provision.
- Knaresborough RUFC have recently received funding to improve the quality of their pitches however the quality of ancillary facilities remains unsuitable and the facilities mean that junior and female play cannot currently be accommodated.

Key issues to address – Rugby League

There is limited participation in rugby league in Harrogate Borough Currently however there are aspirations to increase this over the course of this strategy period. While efforts are likely to focus upon the creation of a club at a school site, there will be a need to monitor facility requirements over the strategy period.

Key issues to address Hockey

Analysis of the current stock of AGPs demonstrates that there are eight facilities that could accommodate hockey, however only two of these are accessible to the general public.

- The Sport England Facility Planning Model indicates that there are shortages of Artificial Grass Pitches equivalent to up to three pitches (although one pitch is excluded from consideration as it has only recently been built). This model takes into account only those facilities that are available to the local community. It suggests there is greater unmet demand for 3g AGPs (that are suitable for football) than sand based AGPs (that are used for hockey). It is clear therefore that while there are sufficient pitches in the district in theory, the lack of access to these facilities means that demand is not being met.
- When taking into account all pitches in the district that are accessible for hockey, using both the FPM and Towards a Level Playing Field calculations which consider the actual demand for hockey in the district at peak time, there are sufficient pitches to accommodate the needs of Harrogate Hockey Club. More local analysis indicates the club base is becoming stretched and junior teams travel to use other facilities to ensure that fixtures can be fulfilled. England Hockey indicates that a lack of suitable facilities is inhibiting further growth of the club and development of the club site and they would like to see a second AGP provided on the Harrogate High School Site.

Key issues to address – Tennis

- Tennis offers a significant opportunity to increase overall participation in sport and physical activity in the Borough – the sport has a wider participation base than any other sport and the Active People Survey indicates that there is significant latent demand at present.
- There is a strong network of tennis clubs in the district and these are relatively evenly dispersed. There is spare capacity at all of the existing club bases for new members. Despite this, when comparing the amount of facilities that are provided with the potentially active population in the borough, it is clear that provision is reaching capacity. There are also significantly less facilities to meet the size of the population in the south and south east. Some clubs indicate that they require additional provision if they are to meet with needs (although most of these do not meet with LTA parameters for additional provision). If latent demand was realised, demand would be even more closely balanced with, and perhaps exceed, supply. There are several sites that are not accessible to the community that contain large amounts of courts (in particular in Harrogate and Ripon) and access to these sites would become essential.
- While there is a good network of club based facilities, there are lower levels of community facilities and the stock of public courts represents only a small proportion of the overall provision. Increasing the awareness of opportunities to play tennis, as well as the amount of use by local communities is a key priority of the LTA.
- The LTA is working to increase participation in the District and higher levels of take up of the sport may therefore become a reality. In particular, this includes the introduction of

new forms of tennis, which may place different demands for facilities.

- There are quality issues at both club and public facilities which may inhibit the overall development of tennis in both the short and long term if they are not addressed.
-

Key issues to address Croquet

- There are opportunities to increase the amount of croquet played in the district.
 - There are quality issues evident at the existing club at Bishop Monkton which are thought to impact upon club development.
-

Recommendations and Strategy Framework

In order to address the issues identified for each sport, the strategy sets out a series of recommendations that will guide decision making and provide a framework for the future delivery of outdoor sports facilities across Harrogate District. The recommendations seek to ensure that provision evolves and improves to meet current and changing needs and aspirations.

The recommendations set out the actions required to deliver the three aims and objectives set out earlier in this summary, specifically to ensure that:

- there are sufficient pitches and courts to meet demand for both matches and training;
- facilities are of the required quality to cater for the needs of all participants; and
- opportunities for club development and increases for participation at all levels, including both grass roots and elite are maximised.

The recommendations for each sport are set out in the sections that follow.

Football Recommendations

Ensuring that there are enough facilities to meet current and future demand

F1: Address identified deficiencies in junior football pitches and ensure that all teams are playing on pitches of the right size. In the first instance, there are some opportunities to undertake this by redesignating adult pitches as junior pitches, however there are relatively few opportunities to do this, as in most parts of the district the amount of adult pitches is already closely balanced with supply. This should therefore represent a short term (and possibly temporary option) only. Baseline calculations set out in Section 4 indicate that currently as a minimum 18 adult pitches, 25 junior pitches and 12 mini pitches are required to meet peak time demand.

F2: To maximise the use of existing resources and to address deficiencies, particularly in junior football, formalise community agreements at school sites that currently accommodate mini and junior community football. Priority should be given to those pitches currently permitting community use and where there are greater deficiencies. Long term security of tenure should be sought to enable clubs to invest in the facilities and to build partnerships with the school.

Opportunities to increase community use at other school sites through the creation of strong relationships between schools and clubs should also be explored. This is in line with the delivery priorities of the recent Sport England Strategy. There may be opportunities to facilitate community use at school sites through the planning process (referred to later in planning recommendations). It is recognised that there are particular challenges associated with securing community use of school sites. Guidance produced by Sport England [available at http://www.sportengland.org/support_advice/accessing_schools.aspx](http://www.sportengland.org/support_advice/accessing_schools.aspx) may help to maximise opportunities.

F3: Support the creation of new facilities where unmet demand is identified / and or where facilities are at capacity. This situation may arise for a variety of reasons (discussed in Section 4) including a shortage of pitches in quantitative terms, poor quality facilities meaning that pitches are not fit for purpose or a lack of facilities of appropriate size to meet the needs of certain clubs.

Deficiencies should be addressed by:

- expanding existing sites;
- securing community use of existing school sites;
- formalising existing informal pitches into more formal pitches – this may require qualitative improvements;
- providing new facilities (in particular new facilities to facilitate club development); and
- replacing poor quality pitches with high quality facilities on key hub sites.

F4: Seek to relocate clubs that are dispersed across a variety of sites in order to promote club development. This relocation strategy will also help to accommodate the needs of the FA review of youth football (F5).

F5: Support the introduction of new forms of the game introduced through the FA youth review by allocating appropriate pitches to meet new size guidelines. These new forms of the game are designed to make the transition between junior and adult football easier and to maximise technical improvements.

The introduction of new pitch sizes will however place further demands on the existing pitch stock and the way it is accommodated will need to be different for each club (for example some sites have sufficient capacity on site to lay out additional pitches, while others may need to overmark different sized pitches). Clubs that will be impacted

primarily have their own grounds already, but many are identified within this strategy as requiring new or extended grounds.

Ensuring that facilities are of sufficient quality to meet the needs of all users

F6: Seek to provide changing facilities of appropriate quality at all sites accommodating adult football and a minimum standard of toilets and wash facilities at sites for junior and mini football.

F7: Seek to improve the short and longer term quality of pitches by securing levels of investment to ensure that maintenance regimes appropriate to the pitch and its' usage are adopted. This may involve investment in further maintenance work and the purchase / regular renting of additional machinery. The quality of maintenance at all sites is particularly important given the levels of use that are sustained. Support with line marking (possibly guidelines laid down on each pitch at the beginning of the season) should also be given as current line marking is of poor quality on many sites and the sizing of pitches will become increasingly important with the introduction of the new FA review.

F8: To improve the capacity of existing sites and the playing experience for clubs, address identified drainage issues at existing pitches focusing firstly on larger sites where improvements will have maximum impact and where cancellations have been abundant due to drainage issues.

F9: Ensure facilities are tailored to the requirements of clubs by supporting clubs with specific requirements where identified, particularly where a lack of appropriate facilities will impact upon club development and / or progression through the FA pyramid. Consideration should also be given to the additional requirements arising from the FA Youth Review. This might include the provision of new storage facilities and locally required qualitative improvements.

F10: Support the growth and development of football clubs by improving access to training facilities for football clubs across the District. There is a need for both grass and artificial training facilities. Evidence suggests that there are currently not enough 3g pitches (although there are enough pitches when also taking into account sand based pitches, most of these are not open to the community). This should include:

- training floodlights at pitch sites – where training grids can be marked out, this will not impact upon the wear and tear of match pitches; and
- consideration given to the provision of one – two additional 3g AGPs in the District. This could be delivered either by resurfacing an existing facility and opening it up to the community, or the creation of a new facility. The key areas for consideration are Harrogate / Knaresborough (new 3g provision could be delivered by resurfacing and opening up existing facility or new provision), Ripon (new facility) or Boroughbridge (new provision).

Support Football Development

F11: Evaluate opportunities to improve booking systems to improve efficiencies and maximise access to different types of facilities for all user groups. This should include;

- to avoid imbalance in use of pitches, operate a system that ensures that pitches are evenly booked out to avoid wear and tear and operate a policy of rest and recovery on pitch sites during the season;
- the existing policy of ensuring prices reflect pitch quality should be retained and reviewed regularly; and
- given that demand for pitches is relatively closely balanced with supply in Harrogate District and there are shortfalls in neighbouring authorities, consideration should also be given to the implementation of a policy permitting use of Harrogate BC pitches only by residents in Harrogate.

F12: Re-establish a football development forum to improve communication between pitch providers, leagues and clubs and ensure that issues impacting upon participation and quality of play can be addressed immediately. An immediate area of discussion at this forum should be the implications of the FA review for football and how this is to be addressed.

F13: Support clubs in their growth and sustainability by implementing a policy of asset transfer / management agreements where clubs are able to demonstrate long term development plans and have achieved appropriate accreditations.

F14: Develop interventions to increase participation in football across the district.

Cricket Recommendations

Ensuring that there are enough facilities to meet current and future demand

C1: In partnership with the Yorkshire Cricket Board, ensure that the amount of cricket facilities available does not impact on the opportunities to grow participation in the sport. Many clubs are nearing capacity, particularly on a Saturday afternoon and midweek where demand for junior cricket is high. New facilities for use by these clubs should be sought through:

- the ongoing development of relationships between larger and smaller clubs. This has already proved successful in the district, with many larger clubs using facilities owned by smaller clubs;
- the development of school club links and the establishment of a relationship between schools and cricket clubs. Facilities at school sites can then be used by the cricket club as the club expands. Note improvements to the quality of facilities are likely to also be required (in line with recommendation (C3)); and
- the provision of a new satellite ground (ie off site facility) for clubs at capacity where this represents a sustainable option for growth.

C2: Secure the use of school facilities currently used to support community cricket. The challenges in achieving this are recognised, however guidance provided by Sport England (http://www.sportengland.org/support_advice/accessing_schools.aspx) will help to maximise opportunities.

Ensuring that facilities are of appropriate quality to meet the needs of all users

C3: Recognising the high levels of demand that are evident and the need for pitches to sustain high levels of use, work in partnership with the Yorkshire Cricket Board to support clubs in improving the quality of pitches, and in accessing funding through the ECB Grant Aid and Pitch Advisory Scheme. Key areas for improvement relate to:

- grounds maintenance skills – qualifications and education, as well membership of the Institute of Groundsmen
- changing pavilions
- equipment
- pitch quality.

C4: Work with local leagues and clubs to implement a means of monitoring the quality of provision. This should involve a similar process to that currently implemented by the Theakston Nidderdale Cricket League. This is particularly essential given the high levels of use that are evident as it will ensure that issues are identified early enough to rectify them before they impact upon club participation.

C5: Support cricket clubs in the development of training nets to enhance club sustainability and improve overall performance. This might include:

- securing the use of the indoor venues currently used for the junior league (Pateley Bridge and Boroughbridge)
- an additional indoor cricket venue (in an area of high participation and population – Harrogate / Knaresborough or Ripon)
- the provision of outdoor cricket nets at larger clubs that do not currently have access to such facilities.

Support Cricket Development

C6: Support the sustainable growth of cricket and clubs in the district by promoting communication between all of those involved in cricket through the continuation of the cricket development forum. New clubs should be encouraged to join and share good practice and the forum should support accurate forward planning for all clubs. This will also help in the achievement of recommendation C2 (building of relationships between smaller and larger clubs)

C7: Support the introduction of development initiatives to increase participation in cricket. This may include new forms of the game such as Last Man Standing and initiatives targeting school pupils. Efforts to increase junior participation should be particularly targeted at areas where current numbers of junior teams are lower and where there is capacity in the existing stock to accommodate such demand, specifically;

- North East Harrogate District
- Ripon.

Rugby Recommendations

Ensuring that there are enough facilities to meet current and future demand

R1: Support club relocation where existing club bases are constraining the amount and standard of play.

R2: Consider opportunities to improve security of tenure.

R3: Monitor demand for rugby league provision over the strategy period.

Ensuring that facilities are of appropriate quality to meet the needs of current and future users

R4: Support partners to maintain and improve the quality of existing facilities including;

- Improving and expanding changing accommodation
- The provision of training floodlights at all sites in the District.

Support Rugby Development

R5: Support aspirations to increase participation in rugby across the district and manage the impact of these aspirations on facility development.

R6: Support initiatives to increase rugby participation including the introduction of new forms of the game, which may require the provision of flexible spaces.

Hockey Recommendations

Ensuring that there are enough facilities to meet current and future demand

H1: Consider the provision of an additional AGP to support the needs of Harrogate Hockey Club.

Ensure that facilities are of appropriate quality to meet the needs of users

H2: Harrogate Hockey Club are currently happy with the quality of facilities at their club site. Support any improvements that are required to maintain this standard in the longer term. It should also be ensured that a sinking fund is in place to support the refurbishment of the pitch surface when this is required.

Promote Hockey Development

H2: Support initiatives to introduce new forms of hockey to the district by ensuring that appropriate flexible spaces are available. Priority initiatives for England Hockey are:

- Rush Hockey
- Back to Hockey

H4: Support increases in participation in hockey through the existing club structure and improvement of links with potential participants through the ongoing delivery of hockey in schools.

Tennis Recommendations

Ensuring that there are enough facilities to meet current and future demand

T1: Support the provision of a new indoor tennis facility to enhance the capacity and functionality of existing facilities in the district. This would be best located in Harrogate.

T2: Support Parish Councils with aspirations to develop local tennis provision in order to meet the identified latent demand where this is identified. Priority should be placed on areas which will meet gaps in accessibility.

Ensure that facilities are of appropriate quality to meet the needs of users

T3: Work with the LTA to develop at least one community tennis facility under the Beacon sites programme. This could be located at one of the public tennis sites, or alternatively at a school site that does not currently offer public use or have a club base.

T4: Address quality issues identified at club sites prioritising areas where club development is limited by quality constraints.

T5: Work with the LTA to raise awareness of opportunities for tennis at both public and private facilities across the district.

T6: Support the development of new forms of tennis in order to increase participation across the district. This might include mini tennis, which provides the use of more flexible spaces.

Croquet Recommendations

Ensure that there are enough facilities to meet the needs of users

CQ1: Investigate opportunities to provide a new croquet lawn in Harrogate Town. This should be delivered in conjunction with The Croquet Association (potentially at a former bowling green) and should follow the success introduction of taster days.

Ensure that facilities are of appropriate quality to meet the needs of users

CQ2: Ensure that facilities are of sufficient quality to meet the needs of users by addressing quality issues at existing sites.

Maximise Club Development

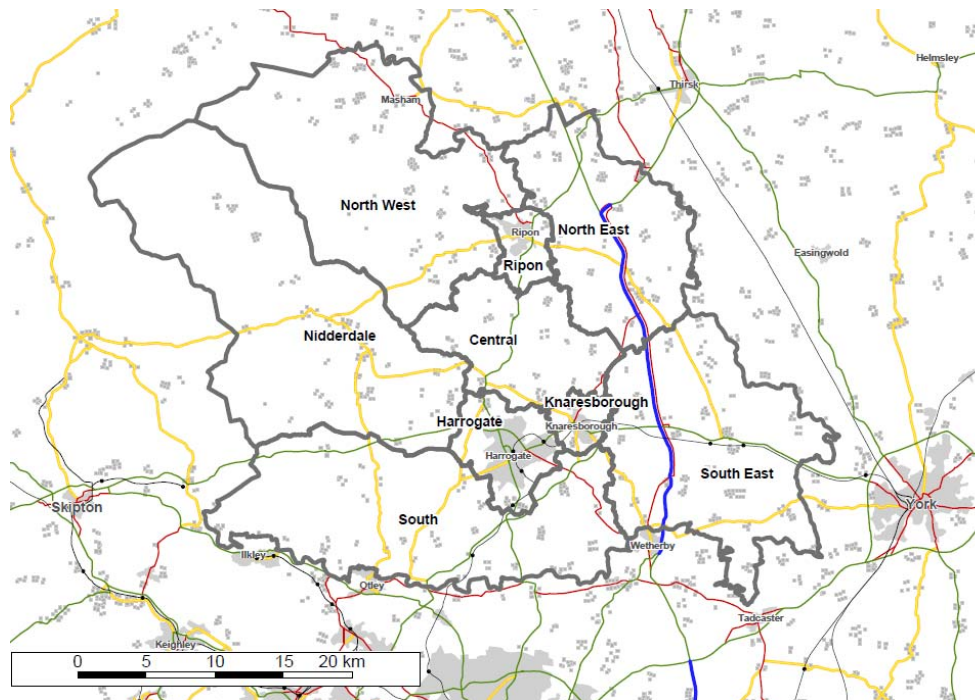
CQ3: Seek to increase participation by running taster days to introduce new participants to croquet.

Geographical Issues and Key Priorities

To fully understand the patterns of supply and demand, the adequacy of provision has also been analysed more specifically within each of nine geographical regions. This ensures that issues relating to specific areas of the district are identified and that settlement and site specific issues can be recorded. These geographical regions are illustrated in Map E1 and are as follows:

- Harrogate Town
- Knaresborough
- Ripon
- South Harrogate District
- South East Harrogate District
- Central Harrogate District
- Nidderdale
- North East Harrogate District
- North West Harrogate District

Map E1 – Geographical Areas of Harrogate



The key issues arising for each sport in each part of the district are summarised in the tables that follow. For each area, the strategy considers:

- The context and issues for each sport
- The recommendations that are most appropriate to this area
- Site specific opportunities for delivery of the recommendations.

Central Harrogate District

Central Harrogate District has a population of circa 4940 and the largest settlements are Ripley and Burton Leonard. Other parishes also included within this area are Markenfield Hall, Markington with Wallerthwaite, Bishop Thornton, Ripley, Nidd, Brearton, Scotton, Farnham, Ferrensby, Staveley, Walkingham Hill with Occaney, Copgrove, Burton Leonard, Bishop Monkton, South Stainley with Cayton

Table E2 – Context – Area Specific Summary - Central Harrogate District

Sport	Context	Issues to be Addressed
Football	<p>14 pitches secured for community use. 21 teams in total, with a strong emphasis on junior football. Key clubs include Scotton Scorchers, Burton Bullets and Ripley Rockets. Football pitches in Central Harrogate District are managed by clubs and Parish Councils / Playing Fields Trusts. Unlike the district wide average, demand is higher for pitches on a Saturday morning (junior and mini pitches) and a Sunday afternoon (teams needing larger pitches—primarily U17 / U18 teams).</p> <p>Reflecting the number of junior teams, there are pressures on junior pitches, which are caused primarily by the large numbers of teams run by Scotton Scorchers JFC and Nidd United FC. It is also clear that cricket clubs have a particularly important role to play in this part of the district, with shortfalls of pitches if cricket clubs are taken out of the equation. More than one club indicate that pitch provision for juniors is already becoming tightly balanced in this area.</p>	<p>Shortages of junior pitch provision</p> <p>Reliance upon cricket clubs to provide pitches for football</p> <p>Dispersal of clubs</p> <p>Quality issues, particularly with changing facilities.</p>

Sport	Context	Issues to be Addressed																								
	<table border="1"> <thead> <tr> <th data-bbox="331 321 846 435">Scenario</th> <th data-bbox="856 321 1050 435">Adult Football Shortfall / Surplus</th> <th data-bbox="1060 321 1253 435">Junior Football -Shortfall / Surplus</th> <th data-bbox="1264 321 1423 435">Mini Football -Shortfall / Surplus</th> </tr> </thead> <tbody> <tr> <td data-bbox="331 443 846 500">Baseline Supply and Demand (draws upon district wide patterns of play).</td> <td data-bbox="856 443 1050 500">3.3</td> <td data-bbox="1060 443 1253 500">-1</td> <td data-bbox="1264 443 1423 500">6.9</td> </tr> <tr> <td data-bbox="331 508 846 597">Supply and Demand taking into account area specific patterns of play <i>(Explained further in Table 4.10)</i></td> <td data-bbox="856 508 1050 597">2.5</td> <td data-bbox="1060 508 1253 597">-3</td> <td data-bbox="1264 508 1423 597">4</td> </tr> <tr> <td data-bbox="331 605 846 654">Including schools that offer informal community access <i>(Explained further in Table 4.11)</i></td> <td data-bbox="856 605 1050 654">3.3</td> <td data-bbox="1060 605 1253 654">-1</td> <td data-bbox="1264 605 1423 654">6.9</td> </tr> <tr> <td data-bbox="331 662 846 719">Excluding pitches provided at cricket clubs (which may be removed if they are not used)</td> <td data-bbox="856 662 1050 719">3.3</td> <td data-bbox="1060 662 1253 719">-2</td> <td data-bbox="1264 662 1423 719">-0.1</td> </tr> <tr> <td data-bbox="331 727 846 800">Shortfalls and Surpluses excluding Poor Quality Pitches <i>(Explained further in Table 4.13)</i></td> <td data-bbox="856 727 1050 800">2.3</td> <td data-bbox="1060 727 1253 800">-1</td> <td data-bbox="1264 727 1423 800">6.9</td> </tr> </tbody> </table>	Scenario	Adult Football Shortfall / Surplus	Junior Football -Shortfall / Surplus	Mini Football -Shortfall / Surplus	Baseline Supply and Demand (draws upon district wide patterns of play).	3.3	-1	6.9	Supply and Demand taking into account area specific patterns of play <i>(Explained further in Table 4.10)</i>	2.5	-3	4	Including schools that offer informal community access <i>(Explained further in Table 4.11)</i>	3.3	-1	6.9	Excluding pitches provided at cricket clubs (which may be removed if they are not used)	3.3	-2	-0.1	Shortfalls and Surpluses excluding Poor Quality Pitches <i>(Explained further in Table 4.13)</i>	2.3	-1	6.9	
Scenario	Adult Football Shortfall / Surplus	Junior Football -Shortfall / Surplus	Mini Football -Shortfall / Surplus																							
Baseline Supply and Demand (draws upon district wide patterns of play).	3.3	-1	6.9																							
Supply and Demand taking into account area specific patterns of play <i>(Explained further in Table 4.10)</i>	2.5	-3	4																							
Including schools that offer informal community access <i>(Explained further in Table 4.11)</i>	3.3	-1	6.9																							
Excluding pitches provided at cricket clubs (which may be removed if they are not used)	3.3	-2	-0.1																							
Shortfalls and Surpluses excluding Poor Quality Pitches <i>(Explained further in Table 4.13)</i>	2.3	-1	6.9																							
	<p>Building upon the data presented on the previous page, for adult pitches both Burton Leonard and Bishop Monkton have capacity. Markington also has capacity although there are no changing facilities at this site, the club use the cricket pavilion. Capacity for additional junior teams is more limited. While there is some availability at peak time, demand is spread meaning that pitches take lots of games over the weekend period. As highlighted above, clubs highlight concerns about the limited provision of pitches. No clubs indicated however that they have issues accessing pitches for matches or training currently. Scotton Scorchers use the adult pitch as three mini pitches frequently, meaning that this pitch takes extra wear and tear than would otherwise be the case and it also accommodates training.</p> <p>Adding to this, clubs raise concerns relating to overuse of existing pitches and the impact that this will have longer term. The quality of facilities is good, with the highest average percentage in the district. Changing facilities are however a concern, with provision at the majority of sites considered poor. The range of scores achieved (51-86% demonstrates this). Just over 50% of clubs are not satisfied with the stock of facilities currently and this was attributed to the quality of provision rather than the amount of facilities.</p>																									

Sport	Context	Issues to be Addressed
	<p>The relatively small size of sites in this area means that junior clubs are spread across multiple venues. They also train on their pitches adding further pressures to these sites.</p>	
Cricket	<p>Cricket in Central Harrogate is focused on seven sites and there are 26 adult teams and 12 junior teams. In terms of the number of teams measured against the population of the area, this means that participation in cricket is higher in this part of the borough than in any other. Both Burton Leonard and Ripley, the two largest settlements in the area have strong cricket clubs.</p> <p>Reflecting this, at peak time on a Saturday afternoon, there is a small shortfall of pitches in Central Harrogate equivalent to 0.8 pitches. This suggests that the existing stock of cricket pitches is at capacity and that there is limited scope for further growth.</p> <p>With the exception of Bishop Monkton Playing Fields, all pitches have at least two teams wishing to use them on a Saturday afternoon (peak time) and they are therefore fully booked. There is capacity at all sites on a Sunday. It is clear that capacity at larger clubs is becoming stretched. For Burton Leonard and Ripley CC specifically, capacity midweek is also becoming stretched due to high numbers of junior teams, as well as participation by adults in midweek leagues. This suggests that cricket pitches in this part of the district are well used.</p> <p>Both Ripley CC and Bishop Thornton CC comment on the impact that the amount of play is already having on their wickets and data suggests that both clubs use each strip more than the recommended number of times per season.</p> <p>Two clubs do not currently have any practice nets – specifically Markington and Scotton. Both of these are relatively small clubs.</p> <p>Quality is varying in this part of the district, with scores ranging from 64% to 91%. Both Markington and Staveley CC have poor pavilions and several clubs reference issues with lack of equipment and concerns with pitch maintenance and drainage. It is notable that almost all facilities in this part of the district are also used for football which places extra wear and tear on the outfield. Site visits clearly demonstrate the implications of this, with evidence of damage to the surface at several sites. Quality concerns are of greater priority currently than quantity, however longer term, pressures on cricket pitches may further increase if clubs continue to grow and it is likely that even in the short term, facilities will begin to restrict the expansion of some of the larger clubs. There are no school sites in this area that currently have cricket pitches.</p>	<p>Impact of football on cricket pitches</p> <p>Short term quality issues</p> <p>Longer term shortfalls of provision</p>

Sport	Context	Issues to be Addressed
Rugby	No rugby played in this area.	None
Hockey	No hockey played in this area.	None
Tennis	<p>There are five courts in Central Harrogate all of which are accessible. Both large settlements within this area (Ripley and Burton Leonard) have facilities meaning that the larger areas of population are within close proximity to a site. The location of facilities in these settlements also provides for those in the immediate surrounds and most residents have access to a facility within a 10 minute drivetime.</p> <p>Assuming the average participation rate across the Borough of 4.1%, each court in this area would be required to accommodate circa 40 players. This suggests that there is capacity in the current facility stock. While Burton Leonard TC indicate that they would like an additional court, LTA parameters suggest that the club does not have enough members currently to require this, although longer term if membership was to increase an additional court would help to cater for this demand. All clubs have capacity for existing members.</p>	None
Croquet	The only croquet facility in this area of the district is located at Bishop Monkton. The club is a progressive club but issues with the drainage mean that the rink has been unused this year.	Drainage at existing club site

Table E.2 draws upon the general recommendations set out in this strategy and identifies the key priorities for the Central Harrogate Area.

Table E.2 Central Harrogate – Summary of Key Priorities

Sport	Key Priorities in Central Harrogate	Rationale	Priority
Football	F5: Support the introduction of new forms of the game.	The impact of these proposals will need to be considered in the short term as new pitch configurations will be required in 2013. This will exacerbate the urgency of the recommendations below. There is a strong participation in junior football in this area and the impact for pitch requirements will therefore be felt strongly.	Short Term
	F3 / F5: Support the creation of	Demand for junior pitch provision is high and there is a need	

Sport	Key Priorities in Central Harrogate	Rationale	Priority
	<p>new facilities / relocate clubs that are dispersed across a variety of sites.</p> <p>F7 / F8 /F9– Improve pitch quality</p>	<p>to provide additional facilities in the short term and a potential longer term further requirement. Long term secured use of school sites will increase the amount of facilities available.</p> <p>Quality of pitches is high although there are issues with changing facilities. The quality of pitches is particularly important in this area as facilities are required to sustain high levels of use and this can impact on quality. Providing additional facilities will reduce the wear and tear on existing pitches, however qualitative improvements will still be required.</p>	<p>Short – Long Term</p> <p>Medium – Long Term</p>
Cricket	<p>C3: Support clubs to improve pitch quality</p> <p>C5: Support clubs in the development of training nets and enhance sustainability</p> <p>C1: Ensure the amount of pitches does not impact upon participation</p>	<p>Quality issues at some sites reduce playing experience. The level of existing provision means that qualitative improvements are as important as new pitches currently.</p> <p>Training nets are an important part of club development, however both clubs without facilities in this area are however small clubs only meaning that they are not a high strategic priority.</p> <p>Capacity is becoming restricted at some larger clubs and extended provision may be required to accommodate demand in the longer term.</p>	<ul style="list-style-type: none"> • Short – Medium Term • Ongoing • Long Term
Rugby	No demand evident	No demand evident	N/A
Hockey	No demand evident	No demand evident	N/A
Tennis	T4 – Address qualitative issues at existing clubs	Capacity in current facility stock. Quality of facilities important if participation is to be maintained.	
Other sports	No demand evident	No demand evident	N/A

Table E.3 sets out the potential options to address the recommendations on a site specific basis.

Table E.3 – Potential Options to Address Recommendations – Central Harrogate

Links	Recommendation for Central Harrogate	Site Specific Opportunities
C3	Support the improvement of existing cricket facilities	Staveley CC (pavilion), Markington CC.
C5	C5: Support clubs in the development of training nets and enhance sustainability	Markington CC, Scotton CC (although both only small clubs)
F3 / F4	Extend facilities for football in area to accommodate club demand	Expansion of facilities at Percy Field to add capacity for Scotton Scorchers and Nidd United. Nidd United are currently spread across a range of sites (in both Central Harrogate and Nidderdale) Longer term new provision may be required through the allocation of land for sporting purposes through the local plan or through the reinstatement of former playing fields that are now used for informal purposes only. This may be of benefit to Nidd United, who are currently spread across several venues. This would also enhance capacity elsewhere.
F5	Evaluate the impact of the new forms of the game introduced through the FA Youth Review	Discuss site specific implications with Scotton Scorchers, Ripley Rockets and Nidd United FC
F7 / F9	Improve pitch quality and support drainage improvements and upgrades	Bishop Monkton Playing Fields, Percy Fields, cricket grounds used for football.

Harrogate Town

Harrogate Town is the main settlement in the borough and has an estimated current population of 78070. For the purposes of analysis, Harrogate Town is considered to include Harrogate, Killinghall and Pannal. It is anticipated that a high proportion of population growth will take place in Harrogate Town.

Table E.4 Context - Area Specific Summary – Harrogate Town

Sport	Context	Issues to be Addressed																								
Football	<p>45 pitches secured for community use. 26 pitches either not fully secure or unavailable. Harrogate High School and Harrogate Grammar School are important providers of pitches for the community. Harrogate Borough Council is the main provider of community pitches.</p> <p>81 teams in total of which 32 are adult, 32 junior and the remainder mini. Clubs are more dissatisfied with provision in Harrogate than any other part of the district. Only one club playing in the town is happy with the facility stock.</p> <p>Modelling reveals that at first glance, there are more than sufficient pitches within Harrogate Town to meet current demand. This however disguises a multitude of issues and various scenarios are set out below.</p> <table border="1" data-bbox="338 760 1440 1317"> <thead> <tr> <th data-bbox="348 760 863 873">Scenario</th> <th data-bbox="873 760 1066 873">Adult Football Shortfall / Surplus</th> <th data-bbox="1077 760 1270 873">Junior Football -Shortfall / Surplus</th> <th data-bbox="1281 760 1440 873">Mini Football -Shortfall / Surplus</th> </tr> </thead> <tbody> <tr> <td data-bbox="348 881 863 938">Baseline Supply and Demand (draws upon district wide patterns of play).</td> <td data-bbox="873 881 1066 938">11.5</td> <td data-bbox="1077 881 1270 938">0.8</td> <td data-bbox="1281 881 1440 938">13.4</td> </tr> <tr> <td data-bbox="348 946 863 1003">Supply and Demand taking into account area specific patterns of play</td> <td data-bbox="873 946 1066 1003">10.75</td> <td data-bbox="1077 946 1270 1003">-4.75</td> <td data-bbox="1281 946 1440 1003">10</td> </tr> <tr> <td data-bbox="348 1011 863 1101">Including schools that offer informal community access (<i>Explained further in Table 4.11</i>)</td> <td data-bbox="873 1011 1066 1101">25.5</td> <td data-bbox="1077 1011 1270 1101">1.8</td> <td data-bbox="1281 1011 1440 1101">13.4</td> </tr> <tr> <td data-bbox="348 1109 863 1230">Excluding pitches provided at cricket clubs (which may be removed if they impact upon pitch quality) (<i>Explained further in Table 4.12</i>)</td> <td data-bbox="873 1109 1066 1230">11.5</td> <td data-bbox="1077 1109 1270 1230">0.8</td> <td data-bbox="1281 1109 1440 1230">7.4</td> </tr> <tr> <td data-bbox="348 1239 863 1317">Shortfalls and Surpluses excluding Poor Quality Pitches (<i>Explained further in Table 4.13</i>)</td> <td data-bbox="873 1239 1066 1317">4.5</td> <td data-bbox="1077 1239 1270 1317">-4.2</td> <td data-bbox="1281 1239 1440 1317">4.4</td> </tr> </tbody> </table>	Scenario	Adult Football Shortfall / Surplus	Junior Football -Shortfall / Surplus	Mini Football -Shortfall / Surplus	Baseline Supply and Demand (draws upon district wide patterns of play).	11.5	0.8	13.4	Supply and Demand taking into account area specific patterns of play	10.75	-4.75	10	Including schools that offer informal community access (<i>Explained further in Table 4.11</i>)	25.5	1.8	13.4	Excluding pitches provided at cricket clubs (which may be removed if they impact upon pitch quality) (<i>Explained further in Table 4.12</i>)	11.5	0.8	7.4	Shortfalls and Surpluses excluding Poor Quality Pitches (<i>Explained further in Table 4.13</i>)	4.5	-4.2	4.4	<p>Imbalance between adult and junior football provision.</p> <p>Poor pitch quality impacting upon overall capacity</p> <p>Role of schools in meeting demand</p> <p>Uneven use of pitches</p> <p>Dispersion of key clubs</p>
Scenario	Adult Football Shortfall / Surplus	Junior Football -Shortfall / Surplus	Mini Football -Shortfall / Surplus																							
Baseline Supply and Demand (draws upon district wide patterns of play).	11.5	0.8	13.4																							
Supply and Demand taking into account area specific patterns of play	10.75	-4.75	10																							
Including schools that offer informal community access (<i>Explained further in Table 4.11</i>)	25.5	1.8	13.4																							
Excluding pitches provided at cricket clubs (which may be removed if they impact upon pitch quality) (<i>Explained further in Table 4.12</i>)	11.5	0.8	7.4																							
Shortfalls and Surpluses excluding Poor Quality Pitches (<i>Explained further in Table 4.13</i>)	4.5	-4.2	4.4																							

Sport	Context	Issues to be Addressed
	<p>Firstly, the district wide figures present a slightly misleading picture, as Harrogate Town is unique in that it is the only part of the district where the peak time for all types of football is the same – Sunday morning. This intensifies the demand at this time. Secondly, there is a clear imbalance between demand for junior pitches and the amount of pitches, and the amount of adult pitches compared to demand.</p> <p>Adding to this, many of the pitches have already been used on a Saturday for competitive play and the majority of teams in the area also train on a Saturday, causing further wear and tear. It is also worth noting that many pitches in this area are overmarked – for example Oatlands Recreation Ground - this means that provision is perhaps slightly more flexible than it may first appear as pitches accommodate teams of different age groups rather than requiring separate pitches.</p> <p>There is a clear role for schools -. Harrogate High School and Harrogate Grammar School are particularly important in meeting the needs of the community for both matches and training and this is clear when schools are added into the equation. There are some concerns about the lack of ancillary facilities available at these sites.</p> <p>While on face value there are more than sufficient pitches to meet requirements, it is clear that quality is a significant issue. When taking into account the quality of pitches and excluding poor quality and / or undesirable pitches, the supply and demand balance is very close. The quality of pitches in this part of the district is lower than many other areas with an average score of 71%. This average however disguises significant variation in pitch quality, with sites achieving scores of between 40% and 91%. Key issues include drainage, lack of appropriate changing accommodation and poor pitch surface conditions.</p> <p>Adding to this, use is unevenly distributed across the pitch stock and indeed many of the pitches are operating at or near capacity at peak time for both adults and juniors. Usage of pitches is influenced by pitch quality. Pitches that are heavily used include Almsford Playing Fields, Blue Coats Nursery, Harlow Hill Playing fields and Killinghall Moor. Several pitches available at the Stray that are not used due to the quality of the pitches and the lack of changing for all pitches. This is indicative of the issues in this part of the district. Poor quality, a lack of changing accommodation and insufficient pitches of the right size were perceived to be the key issues by clubs. Consultation as well as modelling therefore points to the fact that there are not enough pitches of the right quality. Of particular note, many of the pitches suffer from drainage issues. As well as restricting the amount of play that a pitch can take, this also results in frequent</p>	

Sport	Context	Issues to be Addressed
	<p>cancellations, which adds to the backlog of fixtures.</p> <p>Adding to this, several clubs are dispersed across multiple venues. Most notably these include Pannal Sports FC and Pannal Ash FC (both of whom have struggled to access pitches) and Killinghall Nomads. All of these clubs have declared an aspiration to lease pitches in order that they can manage the sites with a view to obtaining funding to improve pitch quality.</p> <p>Harrogate contains the only 3g pitch in the district that is currently available for use (at Rosset Sports Centre). This pitch is perceived by clubs to be fully booked and issues with the cost of the facility are also raised. Nine clubs indicate that they have difficulties obtaining facilities for training and these are a mixture of adult and junior teams.</p> <p>The pitch at Harrogate Grammar School pitch (sand based) is also available to the community although the surface means that it is not suitable for competitive football fixtures.</p>	
Cricket	<p>Participation in Harrogate town is amongst the highest in the district in terms of number of teams (50) however TGRs are lower than all other areas. This means that a lower proportion of people aged up to 55 play cricket in Harrogate Town than in all other areas, suggesting that there is latent demand. There are 7 club based pitches (at six clubs – Harrogate CC has two pitches).</p> <p>Calculations indicate that there is a small shortfall of 0.6 pitches on a Saturday afternoon (peak time), which suggests that the existing stock of cricket pitches is at capacity. Reflecting this, with the exception of Pannal Ash CC, all pitches are fully booked on a Saturday afternoon and most also receive heavy use throughout the week, with only one pitch not used on a Sunday and midweek. Emphasising this, both Bilton CC and Killinghall CC highlight issues with accessing pitches for matches and Killinghall CC is shown to be at capacity in terms of amount of play on the wickets. Pannal CC are also at capacity and have to travel to other grounds to accommodate all of their teams. Almsford Oval is a particularly important overspill ground in this part of the district and is used by a variety of teams including Knaresborough Forest CC, Ripley CC, Pannal CC.</p> <p>Usage of pitches in terms of the number of matches per wicket is lower in this part of the district than in some other areas, however it is notable that there are similar issues – large clubs are nearing capacity although there is space at some of the smaller grounds. There is already evidence of clubs having to travel to other sites to obtain cricket pitches.</p>	<p>Lack of secured access to school facilities</p> <p>Quality issues at some sites</p> <p>Pitches nearing capacity</p>

Sport	Context	Issues to be Addressed
	<p>There are several cricket pitches within Harrogate Town that are not currently used including St John Fishers Catholic High School, St Aidans High School, Army Foundation College, National Policing Improvement Centre, Rossett School and Harrogate Grammar School. Harrogate Gas Cricket Club is also now derelict and the team has recently disbanded.</p> <p>While sites are nearing capacity, quality is also an issue. The quality of facilities at Almsford Playing Fields (pavilion) and Pannal Ash (pavilion) are highlighted as being in need of improvement and the Nidderdale Cricket League ground reports also raised issues relating to the quality of the Almsford Oval pitches. Pannal Ash CC also highlight issues with drainage of pitches.</p>	
Rugby	<p>Harrogate RUFC are the largest club in the borough. Their existing facilities are leased until 2014 however there has been an increase in demand and the club is no longer able to focus all training and playing activities at the single venue. While RFU guidelines suggest that the optimum capacity for pitches is 2 -3 games per week, pitches at Harrogate RFU are used much more frequently than this, catering for both matches and training. The use of additional pitches at Harrogate High School reduces this demand on pitches slightly, however the lack of changing facilities, medical facilities or shelter from the weather is an issue. The club also often uses grassed areas on The Stray (no pitches marked out) to reduce wear and tear on the main pitches. Calculations however clearly demonstrate that pitches are used more than the optimum levels.</p> <p>Uncertainties regarding the lease and a potential move to a new site mean that little investment has been put into the facilities in recent years and the quality of both pitches and changing facilities is relatively poor.</p> <p>The club are also concerned about the lack of floodlit training facilities. The club have aspirations to relocate and have identified a new site.</p>	<p>Harrogate RUFC club base is at capacity and the club needs to expand to deliver it's aspirations. The club have identified a new site.</p> <p>Lack of security of tenure for rugby club</p>
Hockey	<p>Harrogate Hockey Club are the only club in the district and are based at Harrogate High School. The club operates ten senior teams and also has a thriving junior section.</p> <p>Analysis of the current stock of AGPs demonstrates that there are eight facilities that could accommodate hockey, however only two of these are accessible to the general public. The Sport England Facility Planning Model indicates that there are shortages of Artificial Grass Pitches equivalent to up to three pitches (although one pitch is excluded from consideration as</p>	<p>Restrictions on club development from a lack of facilities for Harrogate Hockey Club</p>

Sport	Context	Issues to be Addressed
	<p>it has only recently been built). This model takes into account only those facilities that are available to the local community. It suggests there is greater unmet demand for 3g AGPs (that are suitable for football) than sand based AGPs (that are used for hockey). It is clear therefore that while there are sufficient pitches in the district in theory, the lack of access to these facilities means that demand is not being met.</p> <p>When taking into account all pitches in the district that are accessible for hockey, using both the FPM and Towards a Level Playing Field calculations which consider the actual demand for hockey in the district at peak time, there are sufficient pitches to accommodate the needs of Harrogate Hockey Club. More local analysis indicates the club base is becoming stretched and junior teams travel to use other facilities to ensure that fixtures can be fulfilled. England Hockey indicate that a lack of suitable facilities is inhibiting further growth of the club and development of the club site and they would like to see a second AGP provided on the Harrogate High School Site.</p>	
Tennis	<p>Harrogate Town area has the largest number of courts in the district, and also the largest number of courts that are not currently accessible to the community. All residents are within 5 miles of at least one court. The higher population in the area means that based on the assumed participation rate of 4.1%:</p> <ul style="list-style-type: none"> • If all courts were accessible, each court in Harrogate would accommodate 50 people • When taking into account just those courts that are currently available, this rises to 65 people. <p>Both of the above levels suggest that facilities are nearing capacity, but that currently, in quantitative terms are only just sufficient to meet demand. Longer term however, if latent demand is realised, community use of facilities that are not currently available would be essential if demand was satisfied. All of the existing clubs have capacity and none of the clubs have a membership that exceeds the number of courts that they have, based upon LTA parameters although Spa Lawn Tennis Club and Harrogate Racquets Club are nearing these levels.</p> <p>While the overall amount of facilities is sufficient, it is notable that the stock of courts is predominantly club based. Research suggests that the provision of a variety of opportunities is likely to maximise participation. Spa Lawn Tennis Club wish to relocate to develop a new tennis</p>	<p>Priorities of the LTA to increase public awareness of pay and play opportunities and to develop a beacon facility</p> <p>Lack of access to some tennis courts</p> <p>Quality issues at some sites</p>

Sport	Context	Issues to be Addressed
	<p>centre including both indoor and outdoor courts.</p> <p>The quality of facilities is generally good, although several clubs identify site specific issues relating to the pavilion and the need to resurface courts. The LTA also wish to maximise the role of public tennis facilities.</p>	
Croquet	There are no croquet facilities within Harrogate although a former site was disbanded several years ago. The Croquet Association highlight opportunities to grow participation in this area through the introduction of a new facility.	Potential to grow participation

Table E.5 draws upon the general recommendations set out in this strategy and identifies the key priorities for the Harrogate Town area.

Table E.5 Harrogate Town – Summary of Key Priorities

Sport	Key Priorities in Harrogate Town	Rationale	Priority
Football	F1: Address balance of provision through redesignation of adult and junior pitches.	Pitch provision not tailored to users. There are shortfalls of junior pitches and surplus adult pitches. Redesignation will help to provide a short term solution to reduce these pressures.	Short Term
	F5: Support the introduction of new forms of the game.	The impact of these proposals will need to be considered in the short term as new pitch configurations will be required in 2013. This will exacerbate the urgency of the recommendations below.	
	F7 / F8 – Improve pitch quality and drainage	Quality of pitches impacts upon capacity and desirability of pitches. As a consequence, there is an imbalance of use and perceived shortfalls of provision. There are not enough pitches of the right quality. Improvements to pitch quality / drainage will maximise the role of existing facilities.	Short – Medium Term
	F3 / F5: Support the creation of new facilities / relocate clubs that are dispersed across a	Relocation of clubs that are currently dispersed to new provision will free up capacity at other sites for existing	Medium – Long Term

Sport	Key Priorities in Harrogate Town	Rationale	Priority
	<p>variety of sites.</p> <p>F10: Consider the provision of a 3g AGP</p>	<p>teams.</p> <p>Long term secured use of school sites will increase the amount of facilities available. Improvements to these pitches may be required (linking with F7 / F8 / F6) to ensure that they are suitable for community use.</p> <p>Replacement of poor quality facilities with higher quality sites would better meet demand. This may include the replacement of single pitches with larger quality sites.</p> <p>As the largest centre of population, a 3g AGP would improve the strategic distribution of these facilities as well as providing additional capacity for football.</p>	<p>Long Term</p>
Cricket	<p>C3: Support clubs to improve pitch quality</p> <p>C1: Ensure the amount of pitches does not impact upon participation</p> <p>C5: Support clubs in the development of training nets and enhance sustainability</p>	<p>Quality issues at some sites reduce playing experience. Longer term, as larger clubs near capacity, there may be opportunities to use smaller facilities as overspill (see below) but only if they are appropriate quality).</p> <p>Capacity is becoming restricted at some larger clubs and extended provision may be required to accommodate demand.</p> <p>Pitch and quality is essential if capacity of existing facilities is to be sustained.</p>	<ul style="list-style-type: none"> • Short – Medium Term • Medium Term • Ongoing
Rugby	<p>R1: Support the relocation of rugby clubs where existing provision will constrain provision</p>	<p>Existing pitch provision is constrained at Harrogate RUFC in terms of both quality and quantity.</p>	<ul style="list-style-type: none"> • Short Term
Hockey	<p>H2: Support any improvements that are required in pitch provision</p>	<p>Quality improvements will be required as pitch ages</p>	<ul style="list-style-type: none"> • Medium Term

Sport	Key Priorities in Harrogate Town	Rationale	Priority
	H1: Consider the need to provide an additional pitch at Harrogate Hockey Club	Club is nearing capacity and increases in participation may see additional facilities required.	<ul style="list-style-type: none"> Long Term

Table E.6 sets out the potential options to address the recommendations on a site specific basis.

Table E.6 – Potential Options to Address Recommendations – Harrogate Town

Links	Recommendation for Harrogate Town	Site Specific Opportunities
C1	Meet requirements of several clubs who are nearing capacity.	<p>Bring back into use the former Harrogate Gas Cricket Ground (located opposite Killinghall Cricket Club)</p> <p>Local plan allocations to support new facilities, potentially including Pannal Cricket Club</p>
C3	Support the improvement of existing cricket facilities	Almsford Oval (pavilion and pitch)
F1	Redesignation of pitches	<p>Killinghall Moor (change adult to junior pitches)</p> <p>The Stray (adult to junior pitches)</p>
F10	Negotiate access for the community to new 3g AGP or create new facility within Harrogate Town	Ashville College.
F13	Progress discussions with interested clubs in securing leases for facilities,	<p>Killinghall Nomads FC (Killinghall Moor) and Pannal Ash FC (Almsford Oval). It may also be of benefit to consider Oatlands Recreation Ground for Pannal Ash FC as the sites are located very close together). Any lease for Almsford Oval should consider the interrelationship with the cricket pitch on the site as this is an important facility.</p> <p>Discussions with Pannal Ash FC should however consider club</p>

Links	Recommendation for Harrogate Town	Site Specific Opportunities
		<p>development and whether the club should seek a larger site.</p> <p>Any discussions with these clubs should consider the relocation of other clubs / teams that would be effected. The relocation of teams from these clubs to the new grounds would release capacity elsewhere (the Stray).</p>
F2 / F6/ / F9	Secure formal agreements for the use of football pitches. This should include the provision of changing facilities	Harrogate Grammar School, Harrogate High School, St John Fisher School, St Aidans High School
F3 / F4	Allocate land for a new site for at least one large club – this should contain space for sufficient pitches to meet current and projected demand as well as changing accommodation.	Large Club – key opportunities include Pannal Ash, Pannal Sports FC.
F3 / F6 / F7 / F8	<p>Seek to improve access to facilities of appropriate quality across Harrogate by either:</p> <ul style="list-style-type: none"> Identifying opportunities to relocate pitches to existing green spaces – there are several green spaces that may have capacity to accommodate new pitches (appropriate changing accommodation would also be required). Existing pitches should then be returned to green space. There are currently several single pitch sites within Harrogate – the replacement of these facilities with multi pitch sites of higher quality would be of longer term greater value and of higher sporting benefit <p>Or, if no suitable locations are available; the quality of existing facilities should be improved.</p>	<p>a) If drainage issues cannot be addressed at The Stray, it may be necessary to retain this site as green space only and provide a new site (s) to replace these pitches. Other small sites that should be considered include Crimble Meadows, Prospect Park, Harlow Hill, Belmont Park / Cats Field.</p> <p>b)Replacement facilities should be provided through the local plan process through land allocations for sport or on site facilities within larger urban extensions.</p> <p>Quality issues that require improvement are:</p> <ul style="list-style-type: none"> Parking, slope and changing – Queen Ethelburga’s –Changing accommodation improvements / provision – Plantation Avenue / Stray. Drainage – The Hydro, Harrogate Railway, Almsford Oval Pitch improvements - Oatlands Recreation Ground Toilets / washing facilities at smaller sites (Crimble Meadows, Queen Ethelburgas), Cats Field, Belmont Park.

Links	Recommendation for Harrogate Town	Site Specific Opportunities
F5	Evaluate the impact of the new forms of the game introduced through the FA Youth Review	Discuss site specific implications with Killinghall Nomads, Pannal Sports, Pannal Ash FC
F8	Address issues with drainage on existing facilities	Killinghall Moor The Stray Queen Ethelburga's Playing Fields Harrogate Railway Almsford Oval
H1	Support Harrogate Hockey Club in their aspirations for a new hockey pitch at the club base to ensure the ongoing growth of the club, as well as to facilitate aspirations to grow the sport of hockey in the district.	Harrogate Hockey Club
R1	Relocation of rugby clubs to meet demand	Seek to agree suitable relocation site with Harrogate RUFC
T3	Work with the LTA to introduce a Beacon Tennis Centre in the town	Valley Gardens or school site
T4	Address qualitative improvements at tennis clubs;	Harlow TC – Clubhouse Harrogate Racquets Club – Clubhouse St John Fisher School – resurfacing.

Knareborough

Knareborough is one of the key urban settlements within the district and has a population of 16,290. For the purposes of analysis, Knareborough includes the parishes of Knareborough, Plompton, Scriven and Goldsborough.

Table E.7 Area Specific Summary - Knareborough

Sport	Context	Issues to be Addressed																								
Football	<p>11 pitches available for community use and a further five pitches (all located at school sites) with no community use. Only one pitch owned by Council (Fyshe Field), remainder leased and managed by clubs.</p> <p>20 teams in total focused around two key clubs – Knareborough Town and Knareborough Celtic. There has been significant investment into facilities in this area, led by clubs in partnership with the Football Foundation. Demand is perhaps more focused than in other areas of the district, with all adult demand focused on a Saturday afternoon, while junior sport is played on a Sunday. Results of modelling calculations are set out below:</p> <table border="1" data-bbox="338 789 1440 1230"> <thead> <tr> <th data-bbox="348 789 863 902">Scenario</th> <th data-bbox="873 789 1062 902">Adult Football Shortfall / Surplus</th> <th data-bbox="1073 789 1262 902">Junior Football -Shortfall / Surplus</th> <th data-bbox="1272 789 1440 902">Mini Football -Shortfall / Surplus</th> </tr> </thead> <tbody> <tr> <td data-bbox="348 902 863 971">Baseline Supply and Demand (draws upon district wide patterns of play).</td> <td data-bbox="873 902 1062 971">0.3</td> <td data-bbox="1073 902 1262 971">2.9</td> <td data-bbox="1272 902 1440 971">3</td> </tr> <tr> <td data-bbox="348 971 863 1039">Supply and Demand taking into account area specific patterns of play</td> <td data-bbox="873 971 1062 1039">-0.5</td> <td data-bbox="1073 971 1262 1039">2.25</td> <td data-bbox="1272 971 1440 1039">2.75</td> </tr> <tr> <td data-bbox="348 1039 863 1084">Including schools that offer informal community access (Explained further in Table 4.13)</td> <td data-bbox="873 1039 1062 1084">0.3</td> <td data-bbox="1073 1039 1262 1084">3.9</td> <td data-bbox="1272 1039 1440 1084">4</td> </tr> <tr> <td data-bbox="348 1084 863 1153">Excluding pitches provided at cricket clubs (which may be removed if they are not used)</td> <td data-bbox="873 1084 1062 1153">0.3</td> <td data-bbox="1073 1084 1262 1153">2.9</td> <td data-bbox="1272 1084 1440 1153">3</td> </tr> <tr> <td data-bbox="348 1153 863 1230">Shortfalls and Surpluses excluding Poor Quality Pitches (Explained further in Table 4.13)</td> <td data-bbox="873 1153 1062 1230">0.3</td> <td data-bbox="1073 1153 1262 1230">2.9</td> <td data-bbox="1272 1153 1440 1230">3</td> </tr> </tbody> </table> <p>As demonstrated by figures overleaf, despite the higher than average temporal demand, provision is sufficient in quantitative terms to meet the needs of clubs and there is no reliance on cricket clubs or schools to meet needs currently. Despite this, most sites are at or nearing peak</p>	Scenario	Adult Football Shortfall / Surplus	Junior Football -Shortfall / Surplus	Mini Football -Shortfall / Surplus	Baseline Supply and Demand (draws upon district wide patterns of play).	0.3	2.9	3	Supply and Demand taking into account area specific patterns of play	-0.5	2.25	2.75	Including schools that offer informal community access (Explained further in Table 4.13)	0.3	3.9	4	Excluding pitches provided at cricket clubs (which may be removed if they are not used)	0.3	2.9	3	Shortfalls and Surpluses excluding Poor Quality Pitches (Explained further in Table 4.13)	0.3	2.9	3	<p>Adequate existing club bases that have received recent investment. Limited strategic reserve</p> <p>There are few opportunities in Knareborough however for teams that are not affiliated to one of the large clubs to play.</p> <p>Good quality sites but suffer from overuse and unofficial use</p> <p>Future role of St James School – AGP and community use of grass pitches.</p>
Scenario	Adult Football Shortfall / Surplus	Junior Football -Shortfall / Surplus	Mini Football -Shortfall / Surplus																							
Baseline Supply and Demand (draws upon district wide patterns of play).	0.3	2.9	3																							
Supply and Demand taking into account area specific patterns of play	-0.5	2.25	2.75																							
Including schools that offer informal community access (Explained further in Table 4.13)	0.3	3.9	4																							
Excluding pitches provided at cricket clubs (which may be removed if they are not used)	0.3	2.9	3																							
Shortfalls and Surpluses excluding Poor Quality Pitches (Explained further in Table 4.13)	0.3	2.9	3																							

Sport	Context	Issues to be Addressed
	<p>time and weekly capacity. Knaresborough Celtic use King George V Playing Fields as an overspill as their main home site is full and Knaresborough Town also have no capacity at peak times. A mini pitch has also been marked out at Hay a Park to accommodate additional play. Pitches are therefore sustaining relatively high levels of use.</p> <p>Although the quality of pitches is good, there are some signs of heavy use including damage to the surface and poor grass cover. Pitches achieve scores of between 56% and 98%, suggesting that there is a degree in variation, however on average facilities are better than in many other parts of the district. Many of the quality issues can be attributed to high amounts of play.</p> <p>There is no 3g football pitch in Knaresborough. The existing sand based pitch at King James School receives some limited community use however the facility does not have floodlights and it's potential role for community sport is therefore limited. King James School are keen to extend the role of the school in catering for the community, however there are concerns with the drainage of the school playing fields meaning that there are currently limited opportunities for community use of these facilities.</p>	
Cricket	<p>Cricket is focused around three cricket clubs that between them have a total of 26 teams (of which 16 are adult teams). The number of teams that are accommodated at a peak time means that pressures in Knaresborough are higher on a Saturday than in any other part of the borough, with a shortfall of almost two pitches. This is reflected by the use of Almsford Oval by Knaresborough Forest CC – the team have to travel into Harrogate to play. The strips at Knaresborough Forest CC are also heavily used.</p> <p>All three sites are at capacity at peak time. Like in most other parts of the district, and reflecting the number of junior teams that are run by clubs, cricket pitches are also well used on both Sundays and midweek. Knaresborough Cricket Club is at capacity on Sundays as well as Saturdays and all clubs host midweek matches.</p> <p>Although clubs are reaching capacity, quality of facilities emerged as a higher priority, with Knaresborough Forest CC identifying the need to improve changing and drainage, while Goldsborough CC struggle to source appropriate training facilities although all three clubs have practice nets. Changing facilities at Goldsborough are also poor.</p>	<p>Quality issues at key sites</p> <p>Existing sites reaching capacity</p>

Sport	Context	Issues to be Addressed
Rugby	<p>Knaresborough RUFC are one of three rugby clubs in the district. They run two senior teams but have no junior section. They have recently secured a 99 year lease from Harrogate Borough Council for the use of their facilities. Since then, significant investment has been made into the quality of pitches through money received from S106 contributions, as well as funding from Sport England and the RFU. This money was invested in pitch improvements including levelling, drainage, installation of a fence and the purchase of new equipment and posts. As a result, the pitch quality (particularly the first team pitch) is high. The quality of the club house and changing accommodation is poor although a grant has recently been awarded that will see significant improvements to the facility available.</p> <p>Current use of the pitches is below optimum levels and the club has room for expansion in terms of the number of pitches that can be laid out.</p> <p>Although Knaresborough RUFC do not currently operate a junior section, it is hoped that the recent improvements to pitch quality, as well as the planned development of the club house will facilitate the creation of a junior and midi rugby section. The existing club base is not sufficient to enable junior and female participation.</p>	<p>Poor quality pavilion and clubhouse restricts club development.</p>
Hockey	<p>There is no hockey played in Knaresborough. The AGP at Knaresborough King James is the right surface for hockey but is not floodlit.</p>	<p>None</p>
Tennis	<p>There are only two sites containing tennis courts - Conyngam Park and St James School. St James School is an important club base (and includes three new courts) while Congyngam Park is a public facility. There is therefore a good balance of facilities in the town and all residents are able to access a tennis court within a five mile drive. The only quality issue identified is the limited availability of the floodlights at Knaresborough King James.</p> <p>Assuming the average participation rate across the District of 4.1%, each court in this area would be required to accommodate circa 67 players. This suggests that provision in Knaresborough is nearing capacity.</p>	<p>Priorities of the LTA to increase public awareness of pay and play opportunities</p> <p>Limited availability of floodlights at club base</p> <p>Longer term potential requirement for additional courts if latent demand was realised.</p>

Table E.8 draws upon the general recommendations set out in this strategy and identifies the key priorities for the Knaresborough area.

Table E.8 Knaresborough – Summary of Key Priorities

Sport	Key Priorities in Knaresborough	Rationale	Priority
Football	<p>F5: Support the introduction of new forms of the game.</p> <p>F7 / F8 /F9 – Improve pitch quality and drainage</p> <p>F3 / F5: Support the creation of new facilities / relocate clubs that are dispersed across a variety of sites.</p> <p>F10: Support the provision of a new AGP or conversion of an existing facility.</p>	<p>The impact of these proposals will need to be considered in the short term as new pitch configurations will be required in 2013.</p> <p>Quality of pitches impacts upon capacity and desirability of pitches. This is particularly important when pitches are heavily used as in Knaresborough.</p> <p>Long term secured use of school sites will increase the amount of facilities available and reduce the wear and tear on existing pitches. Improvements to these pitches may be required (linking with F7 / F8 / F6) to ensure that they are suitable for community use.</p> <p>As one of the largest centres of population, a 3g AGP in Knaresborough would improve the strategic distribution of these facilities as well as providing additional capacity for football.</p>	<p>Short Term</p> <p>Medium Term</p> <p>Medium Term</p> <p>Medium Term</p>
Cricket	<p>C3: Support clubs to improve pitch quality</p> <p>C1: Ensure the amount of pitches does not impact upon participation</p> <p>C5: Support clubs in the development of training nets</p>	<p>Quality issues at some sites reduce playing experience. The amount of use at these sites means that the quality of facilities is even more important.</p> <p>Capacity is becoming restricted at some larger clubs and extended provision may be required to accommodate demand.</p> <p>Pitch quality is essential if capacity of existing facilities is to be sustained. Training facilities are an important part of this.</p>	<ul style="list-style-type: none"> • Short – Medium Term • Medium Term • Ongoing

Sport	Key Priorities in Knaresborough	Rationale	Priority
	and enhance sustainability		
Rugby	R4: Support qualitative improvements to rugby provision	Capacity of club constrained due to restrictions of clubhouse and pavilion.	<ul style="list-style-type: none"> • Short Term
Hockey	No demand identified	No demand identified	N/A
Tennis	T4: Address quality issues at current tennis sites T5: Improve awareness and participation in tennis	Quality of facilities essential to maintain current levels of participation and increase capacity of key club site. Community participation in tennis is a key priority of the LTA. There are few opportunities for tennis in Knaresborough.	<ul style="list-style-type: none"> • Short term • Medium Term

Table E.9 sets out the potential options to address the recommendations on a site specific basis.

Table E.9 – Potential Options to Address Recommendations – Knaresborough Town

Links	Recommendation for Knaresborough	Site Specific Opportunities
C1	Meet requirements of clubs who are nearing capacity.	Use of facilities at King James School. There is no existing cricket pitch at the site however the creation of a facility could be instrumental in building relationships between the school and local clubs. Local plan allocations to support new facilities. Long term requirement only.
C3/ C5	Support the improvement of existing cricket facilities	Goldsborough Cricket Club Knaresborough Forest Cricket Club (changing facilities)

Links	Recommendation for Knaresborough	Site Specific Opportunities
F10	Consider the provision of a 3g AGP	Resurface AGP at King James School and secure community access to this facility. Floodlights would also be required to maximise the capacity of the site
F2/ F3 /F6/ / F9/F8	Secure formal agreements for the use of football pitches. This should include the provision of changing facilities.	King James School (drainage improvements will also be required to ensure facilities are of appropriate standard). Hay a Park may also be able to accommodate additional junior football. If this option is unsuccessful, extensions to existing club bases may be required long term. This may need to be delivered through the Local Plan via land allocations for sport and on site facilities within larger urban extensions.
F5	Evaluate the impact of the new forms of the game introduced through the FA Youth Review	Discuss site specific implications with Knaresborough Celtic
R4	Improvement of quality of facilities	Support improvements to Knaresborough RUFC (grant received).
T5	Work with the LTA to raise awareness and increase public use of Tennis facilities	Conyngnam Park
T4	Address qualitative improvements at tennis clubs;	King James School – investigate new floodlighting technology with a view to increasing the amount of time lights can be used for.

Ripon

Ripon is the second largest settlement in Harrogate District. For the purposes of analysis, the Ripon area includes Littlethorpe and Sharow. The total population of the area is 18,270.

Table E.10 Area Specific Summary - Ripon

Sport	Context	Issues to be Addressed																								
Football	<p>7 pitches available for community use. Two public pitches (at Camp Close and Ure Bank) and the other pitches are in club control (Hell Wath is leased to Ripon City Panthers by Harrogate BC). Further 10 pitches not secured for use. 4 of these pitches are used by the community currently.</p> <p>21 teams in total. Demand more evenly split than most other parts of the district, with only 50% of demand at peak time for adults, and junior and mini teams playing on a Sunday.</p> <p>Highest levels of dissatisfaction– clubs dissatisfied with both amount and quality of provision.</p> <p>Modelling suggests that supply is closely matched with demand as set out below. Shortfalls of junior pitches are only just outweighed by surpluses of other pitch types. Further discussion is provided on these figures overleaf.</p> <table border="1" data-bbox="342 760 1182 1240"> <thead> <tr> <th data-bbox="352 768 699 914">Scenario</th> <th data-bbox="709 768 846 914">Adult Football Shortfall / Surplus</th> <th data-bbox="856 768 993 914">Junior Football - Shortfall / Surplus</th> <th data-bbox="1003 768 1171 914">Mini Football - Shortfall / Surplus</th> </tr> </thead> <tbody> <tr> <td data-bbox="352 922 699 979">Baseline Supply and Demand (draws upon</td> <td data-bbox="709 922 846 979">1.3</td> <td data-bbox="856 922 993 979">-0.8</td> <td data-bbox="1003 922 1171 979">1.4</td> </tr> <tr> <td data-bbox="352 987 699 1044">Supply and Demand taking into account area specific</td> <td data-bbox="709 987 846 1044">1.5</td> <td data-bbox="856 987 993 1044">0</td> <td data-bbox="1003 987 1171 1044">1.75</td> </tr> <tr> <td data-bbox="352 1052 699 1101">Including schools that offer informal community access</td> <td data-bbox="709 1052 846 1101">3.4</td> <td data-bbox="856 1052 993 1101">0.2</td> <td data-bbox="1003 1052 1171 1101">1.4</td> </tr> <tr> <td data-bbox="352 1109 699 1166">Excluding pitches provided at cricket clubs (which</td> <td data-bbox="709 1109 846 1166">1.4</td> <td data-bbox="856 1109 993 1166">-0.8</td> <td data-bbox="1003 1109 1171 1166">1.4</td> </tr> <tr> <td data-bbox="352 1174 699 1230">Shortfalls and Surpluses excluding Poor Quality</td> <td data-bbox="709 1174 846 1230">0.4</td> <td data-bbox="856 1174 993 1230">-0.8</td> <td data-bbox="1003 1174 1171 1230">1.4</td> </tr> </tbody> </table> <p>When taking into account the actual temporal demand in Ripon (rather than the district wide average) provision is more able to meet demand, however this is partially enforced by the constraints of the pitch stock rather than desires and aspirations of clubs. Districtwide, of the</p>	Scenario	Adult Football Shortfall / Surplus	Junior Football - Shortfall / Surplus	Mini Football - Shortfall / Surplus	Baseline Supply and Demand (draws upon	1.3	-0.8	1.4	Supply and Demand taking into account area specific	1.5	0	1.75	Including schools that offer informal community access	3.4	0.2	1.4	Excluding pitches provided at cricket clubs (which	1.4	-0.8	1.4	Shortfalls and Surpluses excluding Poor Quality	0.4	-0.8	1.4	<p>Pressures on existing pitch stock – provision constraining demand and no strategic reserve</p> <p>Lack of secure access to some pitches</p> <p>Aspirations of Ripon City FC to relocate in order to improve quality and amount of facilities provided. The rugby club would like to use the site vacated by Ripon City FC if this is vacated as the club move to an additional site – this conflicts with the aspirations of the football club, who need to sell the land in order to fund the planned move.</p> <p>Variation in pitch quality and high levels of wear and tear</p> <p>Role of Ure Bank playing pitch</p>
Scenario	Adult Football Shortfall / Surplus	Junior Football - Shortfall / Surplus	Mini Football - Shortfall / Surplus																							
Baseline Supply and Demand (draws upon	1.3	-0.8	1.4																							
Supply and Demand taking into account area specific	1.5	0	1.75																							
Including schools that offer informal community access	3.4	0.2	1.4																							
Excluding pitches provided at cricket clubs (which	1.4	-0.8	1.4																							
Shortfalls and Surpluses excluding Poor Quality	0.4	-0.8	1.4																							

Sport	Context	Issues to be Addressed
	<p>three adult clubs struggling to access match pitches, two are based in Ripon and more than half of all clubs struggle for pitches. There is no capacity on a Saturday afternoon for additional adult play, and only one slot on a Sunday morning at Mallorie Park and Camp Close.</p> <p>Like adult pitches, facilities at Hell Wath are heavily used (and are for the sole use of Ripon City Panthers) and there is no capacity for additional play. These facilities are also used extensively for training.</p> <p>Quality in Ripon varies more than any other part of the district (from 32% (Ure Bank) to 95%). Quality of pitches has an impact on the overall capacity of pitches, with less than one surplus pitch when excluding Ure Bank. This pitch is not used, due to it's quality. This pitch received the lowest quality rating of all facilities in the district and is poorly located</p> <p>All pitches demonstrate signs of overuse and wear tear, specifically limited grass cover and damage to the surface. This heavy use of pitches means that opportunities to train on pitches are limited and the lack of alternative pitches means that clubs struggle to access facilities.</p> <p>There are no 3g pitches in the Ripon area and the only sand based pitch is at Ripon Grammar School, which has limited if any access to the general public. More than 50% of clubs also highlighted concerns about a lack of facilities for training. Training is not permitted on several match pitches in the area.</p>	
Cricket	<p>There are only 9 cricket teams – this is lower than in all other parts of the district. As one of the largest settlements, there may therefore be potential to realise latent demand. Participation in junior cricket is particularly low. There are only two cricket clubs – Ripon CC and Sharow CC. Studley Royal CC is located just outside the boundaries of the Ripon analysis area but is also thought to draw users from this area.</p> <p>Calculations demonstrate that on a Saturday (peak time) there is a shortfall of 0.4 pitches. Both clubs have three adult teams wishing to play on a Saturday and both sites are at capacity at peak time. Facilities at Ripon Grammar School are used as an overspill. This not however secured for community use and access could be removed at any time. There is also a pitch at Claro Barracks that is not accessible.</p> <p>Both sites have capacity outside of peak time (although the strips at Sharow CC are heavily</p>	<p>Lack of secured access to facility at Ripon Grammar School</p> <p>Potential to increase participation</p>

Sport	Context	Issues to be Addressed
	<p>used) and there is particular scope to increase participation at Ripon CC.</p> <p>The quality of both facilities is good, although Ripon CC can suffer from drainage issues during periods of heavy rainfall.</p>	
Rugby	<p>Ripon RUFC one of three clubs in the district and run 14 teams on their three pitches. The club only owns one of these pitches and is reliant on the goodwill of the land owner for use of the others. The club are keen to run additional teams (one adult and one junior team over the next two years). There are rugby pitches at Ripon Grammar, Outwood Academy and Cathedral Choir School that cater for some use although there is no long term relationship with the club.</p> <p>Taking into account match play and training, pitches are used almost 4 times per week which is above optimum levels and the club needs to expand to delivery its aspirations. Although there are sufficient rugby pitches in the district as a whole, rugby is a club based sport and the club base is central to the growth of the club. The club would like to use the site vacated by Ripon City FC if this is vacated as the club move to an additional site – this conflicts with the aspirations of the football club. The club also report issues with the lack of training facilities in the area.</p>	<p>club base is nearing capacity</p> <p>Lack of security of tenure for rugby club</p> <p>Role of school rugby pitches.</p> <p>Lack of training pitches.</p>
Hockey	<p>There is no hockey played in Ripon. The City Council comment that anyone wishing to play hockey must travel to Thirsk as there is a lack of facilities</p>	<p>No clear demand identified for new provision although this should be monitored.</p>
Tennis	<p>The only publicly accessible indoor facility in the district is located in Ripon and there is also a public tennis facility at Ripon Spa Park. All residents are within a 10 minute drive of a tennis court.</p> <p>Almost 50% of the existing courts are not however accessible to the community (located at school / MOD sites that are not open to the public) and this means that there is significant scope to increase provision in this area should the need arise.</p> <p>Assuming that 4.1% of the population (average) play tennis, currently, each court serves over 60 people on average. While at the top end of recommended levels, the presence of the indoor tennis facilities negates this to an extent as such a facility is able to accommodate many more players (LTA estimates circa 100 people per court). If latent demand was realised however, supply would be very closely balanced with demand. Demand for the indoor facility is particularly high as it is the only facility in the district and this facility attracts usage from outside</p>	<p>Priorities of the LTA to increase public awareness of play and play opportunities</p> <p>Lack of access to some tennis courts</p>

Sport	Context	Issues to be Addressed
	<p>Ripon as there are no other indoor facilities in the district. There are several sites that are not available for community access. If all facilities were available to the community, usage would decrease to circa 34 people per court.</p> <p>The quality of tennis courts in this part of the district is high.</p>	
Croquet	There are three croquet lawns at the Ripon Spa Hotel. There are no real issues facing the club currently and there are no additional facility related requirements.	

Table E.11 draws upon the general recommendations and sets out the key priorities for pitch provision in Ripon

Table E.11 – Key Priorities in Ripon

Sport	Key Priorities in Ripon	Rationale	Priority
Football	F5: Support the introduction of new forms of the game.	The impact of these proposals will need to be considered in the short term as new pitch configurations will be required in 2013. This will exacerbate the urgency of the recommendations below.	Short Term
	F3: Support the creation of new facilities where unmet demand is identified and where facilities are at capacity	There are shortfalls in provision in Ripon and it is in this area where the highest pressures in the district are evident. It must be noted that there is a need to balance the requirements of the football and rugby club. Club based facilities are required and there is also potential to create a new public playing field. The creation of new facilities is a priority issue to ensure that football development is not restricted.	Short – Medium Term
	F2 – Secure community use	Replacement of poor quality facilities with higher quality sites would better meet demand. This may include the replacement of single pitches with larger quality sites. There are shortfalls of pitches in Ripon and several school sites that have facilities, some of which are already being	Medium – Long Term

Sport	Key Priorities in Ripon	Rationale	Priority
	agreements at school sites F10 – consider the provision of a new AGP	used on an informal basis. Securing these facilities will provide extra capacity and will reduce unmet demand. This may present a shorter term solution than the priority of securing a new facility (set out above). As the largest centre of population, a 3g AGP would improve the strategic distribution of these facilities as well as providing additional capacity for football.	
Cricket	C2: Investigate opportunities to secure community use at school sites.	Capacity is becoming restricted at both club sites. Informal use is currently made of a school facility but access could be removed from this site at any time. These resources are important to ensure the sustainability of club cricket in Ripon.	<ul style="list-style-type: none"> Short – Medium Term
Rugby	R1: Support the relocation of rugby clubs where existing provision will constrain provision	Existing pitch provision is constrained at Ripon RUFC in terms of both quality and quantity. As set out above, it is important that solutions to this issue are evaluated in conjunction with plans for football.	<ul style="list-style-type: none"> Short Term
Hockey	No demand identified	No demand identified	N/A
Tennis	T3 / T5 Improve access to community tennis facilities	Community participation in tennis is a key priority of the LTA. Existing club based tennis facilities are nearing capacity	

Table E.12 sets out the potential options to address the recommendations on a site specific basis.

Table E.12 – Potential Options to Address Recommendations – Ripon

Links	Recommendation for Ripon	Site Specific Opportunities
C2	Investigate opportunities to secure community use at school sites.	Ripon Grammar School (currently used by club as overspill)

Links	Recommendation for Ripon	Site Specific Opportunities
F10	Provide a new 3g APG	<p>Negotiate access to facility at Ripon Grammar School and reprovide the facility as a 3g pitch (currently sand)</p> <p>New pitch</p>
F3 / R1	Support new facilities for rugby and football clubs to meet demand.	<p>It is important that plans for the football club and rugby club are viewed in the context of each other to ensure an overall sporting benefit for Ripon. The sale for example of the current football club site (and its replacement as a new facility) reduces the options available for the rugby club, who are also struggling for space.</p> <p>Discussions should be held with both Ripon City FC and Ripon RUFC with regards the following options:</p> <ul style="list-style-type: none"> • Creation of a multi sport site in the current location (football / rugby / cricket). To achieve this, qualitative improvements would be required and secured tenure of all existing land used by all clubs would be needed. This may limit future expansion opportunities • Relocation of the football club to a new site – this would need to be delivered through a sporting allocation in the local plan. In this event, the rugby club could expand to the previous land used by the football club, or alternatively, could look to secure new / additional facilities at an alternative venue. Potential facilities include Outwood Academy (formerly Ripon College), Ripon Grammar School and the former Cathedral Choir School playing fields. <p>All existing playing fields should be protected until a satisfactory outcome is reached for both clubs, given the knock on implications of proposals.</p> <p>Additional public pitches are also required in Ripon. The Ure Bank Playing Fields have no current or future sporting value and</p>

Links	Recommendation for Ripon	Site Specific Opportunities
		<p>opportunities to replace this site should be considered. Opportunities for new facilities in Ripon include:</p> <ul style="list-style-type: none"> • New site (potentially replacing Ure Bank) • Use of the former Cathedral Choir School Playing Fields • A sporting allocation in the local plan. This might create an opportunity for Ripon City Panthers to move to a larger site and for their existing site at Hell Wath to accommodate other smaller clubs / single teams.
F5	Evaluate the impact of the new forms of the game introduced through the FA Youth Review	Discuss site specific implications with Ripon City Panthers
T3	Work with the LTA to introduce a Beacon Tennis Centre in the town	Ripon Spa Park

Nidderdale

The Nidderdale area has a population of 9800 and includes the larger settlements of Pateley Bridge, Birstwith, Darley, Summerbridge and Hampsthwaite. It also includes the Parishes of Stonebeck Up, Stonebeck Down, Fountains Earth, High and Low Bishopside, Hartwith cum Winsley, Clint, Felliscliffe, Menwith With Darley, Thonthwaite with Padside, Thuscross, Bewerley, Dacre.

Table E.13 – Issues and Priorities in Nidderdale

Sport	Context	Issues to be Addressed																								
Football	<p>Demand for pitches in Nidderdale is focused on a Saturday for mini soccer, but on Sunday morning for both junior and senior football. This means that there are limited opportunities for adults and juniors to share pitches and a higher demand at this time.</p> <p>Provision in this part of the district is relatively limited, with the only community pitches being at Pateley Bridge Showground, Darley and Hampsthwaite Recreation Ground. Notably, Nidderdale is one of the areas where clubs have expressed higher levels of dissatisfaction with the stock of facilities. The results of calculations are summarised below:</p> <table border="1" data-bbox="336 609 1438 1047"> <thead> <tr> <th data-bbox="346 609 861 722">Scenario</th> <th data-bbox="871 609 1060 722">Adult Football Shortfall / Surplus</th> <th data-bbox="1071 609 1260 722">Junior Football -Shortfall / Surplus</th> <th data-bbox="1270 609 1438 722">Mini Football -Shortfall / Surplus</th> </tr> </thead> <tbody> <tr> <td data-bbox="346 722 861 787">Baseline Supply and Demand (draws upon district wide patterns of play).</td> <td data-bbox="871 722 1060 787">0.4</td> <td data-bbox="1071 722 1260 787">-0.5</td> <td data-bbox="1270 722 1438 787">1.6</td> </tr> <tr> <td data-bbox="346 787 861 852">Supply and Demand taking into account area specific patterns of play</td> <td data-bbox="871 787 1060 852">0</td> <td data-bbox="1071 787 1260 852">-1.5</td> <td data-bbox="1270 787 1438 852">1</td> </tr> <tr> <td data-bbox="346 852 861 917">Including schools that offer informal community access (Explained further in Table 4.13)</td> <td data-bbox="871 852 1060 917">1.4</td> <td data-bbox="1071 852 1260 917">0.5</td> <td data-bbox="1270 852 1438 917">1.6</td> </tr> <tr> <td data-bbox="346 917 861 982">Excluding pitches provided at cricket clubs (which may be removed if they are not used)</td> <td data-bbox="871 917 1060 982">0.4</td> <td data-bbox="1071 917 1260 982">-0.5</td> <td data-bbox="1270 917 1438 982">1.6</td> </tr> <tr> <td data-bbox="346 982 861 1047">Shortfalls and Surpluses excluding Poor Quality Pitches (Explained further in Table 4.13)</td> <td data-bbox="871 982 1060 1047">0.4</td> <td data-bbox="1071 982 1260 1047">-1.5</td> <td data-bbox="1270 982 1438 1047">-0.4</td> </tr> </tbody> </table> <p>As indicated above, even at the baseline level, supply is closely matched with demand. The shortfall of junior pitches is just outweighed by the surplus of adult pitches and the high emphasis on demand for adult and junior pitches on a Sunday morning is clear as there are shortfalls of provision. The playing fields at Nidderdale High School are not currently used, but they would offer additional capacity and reduce pressures on other pitches.</p> <p>The quality of pitches has further negative impact, with shortfalls in this part of the borough increasing when considering the impact of quality of facilities. This is also reflected in club consultation, which demonstrated higher levels of dissatisfaction with the quality of provision</p>	Scenario	Adult Football Shortfall / Surplus	Junior Football -Shortfall / Surplus	Mini Football -Shortfall / Surplus	Baseline Supply and Demand (draws upon district wide patterns of play).	0.4	-0.5	1.6	Supply and Demand taking into account area specific patterns of play	0	-1.5	1	Including schools that offer informal community access (Explained further in Table 4.13)	1.4	0.5	1.6	Excluding pitches provided at cricket clubs (which may be removed if they are not used)	0.4	-0.5	1.6	Shortfalls and Surpluses excluding Poor Quality Pitches (Explained further in Table 4.13)	0.4	-1.5	-0.4	<p>Poor quality of existing facilities</p> <p>Dissatisfaction of clubs and unevenly distributed play</p> <p>Lack of training facilities and access to AGP</p>
Scenario	Adult Football Shortfall / Surplus	Junior Football -Shortfall / Surplus	Mini Football -Shortfall / Surplus																							
Baseline Supply and Demand (draws upon district wide patterns of play).	0.4	-0.5	1.6																							
Supply and Demand taking into account area specific patterns of play	0	-1.5	1																							
Including schools that offer informal community access (Explained further in Table 4.13)	1.4	0.5	1.6																							
Excluding pitches provided at cricket clubs (which may be removed if they are not used)	0.4	-0.5	1.6																							
Shortfalls and Surpluses excluding Poor Quality Pitches (Explained further in Table 4.13)	0.4	-1.5	-0.4																							

Sport	Context	Issues to be Addressed
	<p>than in most other areas. Directly resulting from the quality of facilities, with regards adult pitches, usage is uneven. There is high demand at Darley Playing Fields and Pateley Bridge Showground is also fully booked on a Saturday.</p> <p>The quality of pitches in this area is impacted upon by drainage and water retention issues and it is notable that there is little variation in the quality of the overall facilities, with an average score of 53% to 67%. This however suggests that there are no particularly high quality facilities and quality is lower than many other areas. The poor quality reduces the availability of pitches and can result in cancellations and the relocation of teams. Hampsthwaite Recreation Ground is identified as having particularly poor drainage. Pitches at Hampsthwaite also not have changing facilities which restricts their attractiveness to users. Hampsthwaite has very good toilets and teams change in the cricket pavilion which is in close proximity to the recreation ground. Two adult teams from Hampsthwaite are currently forced to travel to Harrogate Town to use pitches as they are not able to access appropriate pitches within Hampsthwaite. Notably, all clubs expressing dissatisfaction with the pitch stock referenced the quality of pitches and not the amount of facilities.</p> <p>In addition to the pitches highlighted in this section to date, there are several facilities not currently used as formal pitches but that have previously functioned as such, specifically Pateley Bridge Park and Max Pullan Recreation Ground.</p> <p>Access to artificial pitches is limited and many residents are outside of the recommended catchment. There are no 3g pitches in the area and no sand based facilities. Nidderdale High School expressed the aspiration to develop an AGP.</p>	
Cricket	<p>With the exception of Summerbridge, there is a cricket club in all larger settlements in the Nidderdale area and participation is high.</p> <p>Calculations undertaken in line with Towards a Level Playing Field indicate that provision is just sufficient to meet requirements in Nidderdale (0.2 pitches surplus). In addition to secured pitches, Belmont Grosvenor School is regularly used as an overspill facility by clubs, however this site is currently unsecured and access could be removed at any time.</p> <p>Despite calculations suggesting that provision is relatively tight in this area (these are based on the boroughwide temporal distribution of play) Table 5.14 indicates that there is more spare capacity in the stock of facilities than in most other parts of the district with Glasshouses CC,</p>	<p>Role of Belmont Grosvenor School</p> <p>Short term quality issues</p> <p>Lack of training provision at Birstwith CC</p>

Sport	Context	Issues to be Addressed
	<p>Birstwith CC and Hamphthwaite CC both currently able to accommodate additional play on a Saturday. Grounds in this part of the district however have fewer strips on the square, meaning that they have a lower overall capacity to sustain matches and some grounds are nearing capacity in terms of the number of matches that are played, even though there are timeslots available for to accommodate matches.</p> <p>The quality of facilities is varying, but most issues identified relate to the quality of the playing pitch rather than the changing facilities. A lack of practice nets is also raised by some clubs and it is clear that a lower proportion of clubs in this part of the district have access to nets. It is particularly noticeable that Birstwith CC, a relatively large club with 2 grounds have to travel to use nets and have no on site facilities.</p>	
Rugby	No rugby played in this area.	None
Hockey	No hockey played in this area.	None
Tennis	<p>There are four sites containing nine courts in the Nidderdale area and these are a range of public, club and school facilities. Two of the courts are not currently accessible to the general public (at Belmont School). Like the other rural areas, access to courts in some parts of Nidderdale is limited and residents are further than five miles from a facility.</p> <p>Assuming the average participation rate across the Borough of 4.1%, each court in this area would be required to accommodate circa 44 players. This suggests that there is capacity in the current facility stock and this is emphasised by the fact that all clubs have capacity for new members. None of the clubs have a membership that exceeds the number of courts that they have, based upon LTA parameters.</p> <p>When excluding the tennis courts at Belmont School that are not currently available, this rises to 54, which is still within acceptable levels. Dacre Tennis Club highlight the need for a replacement pavilion (shared with cricket club).</p>	None

Table E.14 draws upon the general recommendations set out in this strategy and identifies the key priorities for the Nidderdale Area

Table E.14 Nidderdale – Summary of Key Priorities

Sport	Key Priorities in Nidderdale	Rationale	Priority
Football	<p>F5: Support the introduction of new forms of the game.</p> <p>F7 / F8 /F9– Improve pitch quality</p> <p>F3 / F4 /F5: Support the creation of new facilities / relocate clubs that are dispersed across a variety of sites.</p>	<p>The impact of these proposals will need to be considered in the short term as new pitch configurations will be required in 2013.</p> <p>Quality of pitches is high although there are issues with changing facilities. The quality of pitches is particularly important in this area as facilities are required to sustain high levels of use.</p> <p>Demand for pitch provision is closely matched with demand meaning that longer term, demand may exceed supply. There are several sites that have previously been used for formal play that could be reinstated for this purpose. This may also require qualitative improvements (F7 / F8 / F9)</p>	<p>Short Term</p> <p>Short Term</p> <p>Medium – Long Term</p>
Cricket	<p>C3: Support clubs to improve pitch quality</p> <p>C5: Support clubs in the development of training nets and enhance sustainability</p> <p>C2: Ensure the amount of pitches does not impact upon participation by securing access to school sites</p>	<p>Quality issues at some sites reduce playing experience.</p> <p>Pitch and quality is essential if capacity of existing facilities is to be sustained. Capacity is becoming restricted at some larger clubs and extended provision may be required to accommodate demand.</p> <p>Use takes place on a school site that is not secured formally. This means that access could be removed at any point in time which would be detrimental to cricket provision in the area.</p>	<ul style="list-style-type: none"> • Short – Medium Term • Short - medium • Long Term
Rugby	No demand evident	No demand evident	N/A
Hockey	No demand evident	No demand evident	N/A

Sport	Key Priorities in Nidderdale	Rationale	Priority
Tennis	T4 – Address qualitative issues at existing clubs	Capacity in current facility stock. Quality of facilities important if participation is to be maintained.	
Other sports	No demand evident	No demand evident	N/A

Table E.15 sets out the potential options to address the recommendations on a site specific basis.

Table E.15 – Potential Options to Address Recommendations – Nidderdale

Links	Recommendation for Nidderdale	Site Specific Opportunities
C3 / T4	Support the improvement of existing cricket facilities	Dacre Cricket and Tennis Club
C5	Support clubs in the development of training nets and enhance sustainability	Birstwith CC second ground
F3	Provide additional facilities in the area to accommodate demand.	Reinstatement of facilities previously used for formal play – include Pateley Bridge Park and Max Pullan Recreation Ground. Longer term new provision for Nidd United (linked with recommendations in Central Harrogate). There is also high demand for facilities in Hampsthwaite
F5	Evaluate the impact of the new forms of the game introduced through the FA Youth Review	Discuss site specific implications with Hampsthwaite JFC, Nidd United,
F7 / F9	Improve pitch quality and support drainage improvements and upgrades	Hampsthwaite Recreation Ground
C2/ F2	Negotiate community access to school facilities	Belmont Grosvenor School

North East Harrogate District

The largest settlement in the North East of Harrogate District is Boroughbridge. The area, which has a population of 9350 is illustrated on Map E and also contains the Parishes of Copt Hewick, Bridge Hewick, Givendale, Newby with Multick, Weswick, Roecliffe, Boroughbridge, Ellenthorpe, Milby, Kirby Hill, Humberton, Thornton Bridge, Norton-le-Clay, Cundall with Leckby, Dishforth, Skelton, Marton-le-Moor, Langthorpe, Melmbery, Wath, Rainton with Newby, Asenby, Hutton Conyers, Baldersby and Norton Conyers.

Table E.16 – Issues and Priorities in North East Harrogate District

Sport	Context	Issues to be Addressed																								
Football	<p>There are only 2 adult football pitches secured for community use but there are 15 teams. Boroughbridge High School and Primary School both offer unsecured use. The only community pitches are at Boroughbridge Sports Association and Dishforth Playing Fields. Boroughbridge is the main settlement in this area of the district and the majority of demand is based within this area.</p> <p>Demand for pitches in North East Harrogate District is focused upon a Saturday afternoon for adults and Saturday mornings for junior and mini teams. This means that there is heavy use of pitches on a Saturday. The results of calculations and modelling are summarised below.</p> <table border="1" style="width: 100%; border-collapse: collapse; text-align: center;"> <thead> <tr> <th style="background-color: #008000; color: white;">Scenario</th> <th style="background-color: #008000; color: white;">Adult Football Shortfall / Surplus</th> <th style="background-color: #008000; color: white;">Junior Football -Shortfall / Surplus</th> <th style="background-color: #008000; color: white;">Mini Football -Shortfall / Surplus</th> </tr> </thead> <tbody> <tr> <td>Baseline Supply and Demand (draws upon district wide patterns of play).</td> <td>0.4</td> <td style="color: red;">-1.5</td> <td style="color: red;">-0.4</td> </tr> <tr> <td>Supply and Demand taking into account area specific patterns of play</td> <td>1.5</td> <td>-1</td> <td>-1</td> </tr> <tr> <td>Including schools that offer informal community access (Explained further in Table 4.13)</td> <td>3.4</td> <td>1.5</td> <td>0.6</td> </tr> <tr> <td>Excluding pitches provided at cricket clubs (which may be removed if they are not used)</td> <td>0.4</td> <td style="color: red;">-1.5</td> <td style="color: red;">-0.4</td> </tr> <tr> <td>Shortfalls and Surpluses excluding Poor Quality Pitches (Explained further in Table 4.13)</td> <td>0.4</td> <td style="color: red;">-1.5</td> <td style="color: red;">-0.4</td> </tr> </tbody> </table> <p>It is clearly evident that even at the baseline level, there are shortfalls of junior and mini pitches and the provision of adult pitches is only just sufficient. When taking into account the temporal demand for pitches, this situation intensifies further.</p>	Scenario	Adult Football Shortfall / Surplus	Junior Football -Shortfall / Surplus	Mini Football -Shortfall / Surplus	Baseline Supply and Demand (draws upon district wide patterns of play).	0.4	-1.5	-0.4	Supply and Demand taking into account area specific patterns of play	1.5	-1	-1	Including schools that offer informal community access (Explained further in Table 4.13)	3.4	1.5	0.6	Excluding pitches provided at cricket clubs (which may be removed if they are not used)	0.4	-1.5	-0.4	Shortfalls and Surpluses excluding Poor Quality Pitches (Explained further in Table 4.13)	0.4	-1.5	-0.4	<p>Shortfalls in provision</p> <p>Lack of security of tenure for large club</p> <p>Lack of training facilities and access to AGP</p>
Scenario	Adult Football Shortfall / Surplus	Junior Football -Shortfall / Surplus	Mini Football -Shortfall / Surplus																							
Baseline Supply and Demand (draws upon district wide patterns of play).	0.4	-1.5	-0.4																							
Supply and Demand taking into account area specific patterns of play	1.5	-1	-1																							
Including schools that offer informal community access (Explained further in Table 4.13)	3.4	1.5	0.6																							
Excluding pitches provided at cricket clubs (which may be removed if they are not used)	0.4	-1.5	-0.4																							
Shortfalls and Surpluses excluding Poor Quality Pitches (Explained further in Table 4.13)	0.4	-1.5	-0.4																							

Sport	Context	Issues to be Addressed
	<p>Incorporation of facilities at school sites shows a clear reliance upon pitches at school sites (specifically at Boroughbridge High School and Boroughbridge Primary School). These schools do not offer formal community use.</p> <p>The quality of pitches has minimal impact on the overall capacity of community pitches although it must be noted that neither school site offers ancillary facilities to support the pitches that are used.</p> <p>More specifically, with regards adult pitches, Boroughbridge Sports Association is heavily used and there is no spare capacity on either Saturday or Sunday. In contrast, Dishforth Playing Fields is able to accommodate additional play on both Saturday and Sunday</p> <p>There are no opportunities for junior teams outside of the school sites. Boroughbridge JFC are spread across both the High School and the Primary School and they have no security of tenure of facilities. Reflecting this, the clubs express dissatisfaction with the total lack of pitches in this part of the borough and are concerned about the future implications of this in terms of club development. There are also concerns about the quality of pitches, including access to facilities on site. Boroughbridge High School also raise concerns with the drainage of these pitches.</p> <p>In addition to the pitches highlighted in this section to date, Rainton Recreation Field is not currently used as a formal pitch but has previously functioned as such.</p> <p>Access to artificial pitches is limited and many residents are outside of the recommended catchment of 20 minutes. There are no 3g pitches in the area and no sand based facilities. Reflecting this, concerns about access to training facilities were also raised by the clubs. Boroughbridge High School expressed an aspiration to provide an AGP on site.</p>	
Cricket	<p>Boroughbridge, the largest settlement in the North east area contains a cricket club and additional provision is also provided at Boroughbridge High School, although this is available informally only and is rarely if at all used by the clubs.</p> <p>Calculations undertaken in line with Towards a Level Playing Field indicate that provision is sufficient to meet requirements in North East Harrogate District, with more than two pitches surplus to requirements at peak time. This is the only area of the borough where calculations suggest that there are more than two pitches spare on a peak day. Three of the six cricket</p>	Opportunities to increase usage

Sport	Context	Issues to be Addressed
	<p>pitches (there are two at Newby Hall Cricket Club) are able to accommodate additional play on a Saturday. There is also capacity across the week and on a Sunday.</p> <p>There is greater flexibility in the stock of facilities in this area and as a consequence there is particular scope to increase the amount of junior participation, with lower than average numbers of teams playing and most clubs focusing solely on adult participation. Most clubs also have capacity during the week and could therefore accommodate growth in participation. Analysis of the usage of wickets available reinforces this, suggesting that all strips are used below optimum levels.</p> <p>Few quality issues were raised and no clubs raised any concerns.</p>	
Rugby	No rugby played in this area.	None
Hockey	No hockey played in this area.	None
Tennis	<p>The only tennis courts within North East Harrogate are in Boroughbridge, the largest settlement in this part of the district. They are situated on two sites (Boroughbridge Tennis Club and Boroughbridge High School). Like other rural areas, not all residents in this part of the district are within five miles of a tennis court.</p> <p>Assuming that all courts are available (6) (and based upon the average participation rate across the Borough of 4.1%) each court would be required to accommodate circa 60 players which is just within acceptable limits. Tennis courts at Boroughbridge High School are not however currently used by the public and there is no formal use agreement. Courts therefore theoretically accommodate double this (120 people per court) which is over the recommended amount of people.</p> <p>While provision is only just sufficient to meet demand in theoretical terms, there is no evidence to suggest that additional tennis facilities are required at Boroughbridge Tennis Club and the club has capacity for additional members.</p>	None

Table E.17 North East Harrogate District – Summary of Key Priorities

Sport	Key Priorities in North East Harrogate	Rationale	Priority
Football	<p>F5: Support the introduction of new forms of the game.</p> <p>F3 / F5: Support the creation of new facilities / relocate clubs that are dispersed across a variety of sites</p> <p>F2: Secure access to school facilities</p> <p>F10: Consider the provision of a 3g APG</p>	<p>The impact of these proposals will need to be considered in the short term as new pitch configurations will be required in 2013.</p> <p>Demand for pitch provision is closely matched with demand and there are shortfalls of junior pitches. The junior club is dispersed across several sites and does not have security of tenure.</p> <p>Access to school facilities will help to reduce capacity issues and provide longer term sustainability for clubs. Securing access to these facilities may provide a shorter term solution than the new provision suggested above.</p> <p>There is a lack of AGPs in this area of the borough. Provision of a 3g facility may reduce use of grass pitches</p>	<p>Short Term</p> <p>Short Term</p> <p>Short Term</p> <p>Medium – Long Term</p>
Cricket	C3: Support clubs to improve pitch quality	Quality is important to maximise playing experience.	<ul style="list-style-type: none"> Ongoing
Rugby	No demand evident	No demand evident	N/A
Hockey	No demand evident	No demand evident	N/A
Tennis	T4 – Address qualitative issues at existing clubs	Current facilities meeting high levels of demand. Quality of facilities important if participation is to be maintained.	
Other sports	No demand evident	No demand evident	N/A

Table E.18 sets out the potential options to address the recommendations on a site specific basis.

Table E.18 – Potential Options to Address Recommendations – North East Harrogate District

Links	Recommendation for North East Harrogate District	Site Specific Opportunities
F3	Provide additional facilities in the area to accommodate demand.	Support the provision of new facilities at Aldboroughgate
F5	Evaluate the impact of the new forms of the game introduced through the FA Youth Review	Discuss site specific implications with Boroughbridge Juniors and ensure that these requirements are taken into account in the design of Aldboroughgate
F10	Consider the provision of a new AGP	Boroughbridge High School
C2/ F2	Secure community access to school facilities	Boroughbridge High School, Boroughbridge Primary School

North West Harrogate District

North West Harrogate District has a population of just 5800 and includes the larger settlements of Kirkby Malzeard and Masham. It also includes the parishes of Colsterdale, Healey, Ilton-Cum-Pott, Laverton, Skelding, Eavestone, Sawley, Warshill, Aldfield, Lindrick with Studley Royal and Fountains, Studley Roger, Azerley, North Stainley with Sleningford, Gewelthorpe, Burton-on-Yore, Fearby, Ellington High and Low, Ellingstring, Swinton with Wathermarske, Grantley, Winksley.

Table E.19 – Issues and Priorities in North West Harrogate District

Sport	Context	Issues to be Addressed																								
Football	<p>Demand for pitches in North West Harrogate District is focused upon a Saturday afternoon for adults and Saturday mornings for junior and mini teams. There are six teams in total.</p> <p>This means that there is heavy use of pitches on a Saturday. Provision in this part of the district is relatively limited, with the only community pitches being at Kirkby Malzeard (Highside Playing Fields) and Masham Sports Association. This means however that the two key settlements in this part of the borough both have playing fields. Calculations and modelling undertaken are summarised below.</p> <table border="1" data-bbox="359 662 1461 1109"> <thead> <tr> <th data-bbox="359 662 884 781">Scenario</th> <th data-bbox="884 662 1087 781">Adult Football Shortfall / Surplus</th> <th data-bbox="1087 662 1291 781">Junior Football -Shortfall / Surplus</th> <th data-bbox="1291 662 1461 781">Mini Football -Shortfall / Surplus</th> </tr> </thead> <tbody> <tr> <td data-bbox="359 781 884 849">Baseline Supply and Demand (draws upon district wide patterns of play).</td> <td data-bbox="884 781 1087 849">1.3</td> <td data-bbox="1087 781 1291 849">-0.3</td> <td data-bbox="1291 781 1461 849">2.6</td> </tr> <tr> <td data-bbox="359 849 884 917">Supply and Demand taking into account area specific patterns of play</td> <td data-bbox="884 849 1087 917">1</td> <td data-bbox="1087 849 1291 917">-0.5</td> <td data-bbox="1291 849 1461 917">2</td> </tr> <tr> <td data-bbox="359 917 884 985">Including schools that offer informal community access (<i>Explained further in Table 4.13</i>)</td> <td data-bbox="884 917 1087 985">1.3</td> <td data-bbox="1087 917 1291 985">-0.3</td> <td data-bbox="1291 917 1461 985">2.6</td> </tr> <tr> <td data-bbox="359 985 884 1053">Excluding pitches provided at cricket clubs (which may be removed if they are not used)</td> <td data-bbox="884 985 1087 1053">1.3</td> <td data-bbox="1087 985 1291 1053">-0.3</td> <td data-bbox="1291 985 1461 1053">2.6</td> </tr> <tr> <td data-bbox="359 1053 884 1109">Shortfalls and Surpluses excluding Poor Quality Pitches (<i>Explained further in Table 4.13</i>)</td> <td data-bbox="884 1053 1087 1109">1.3</td> <td data-bbox="1087 1053 1291 1109">-0.3</td> <td data-bbox="1291 1053 1461 1109">2.6</td> </tr> </tbody> </table> <p>It is clear that even at the baseline level, provision is just sufficient to meet requirements. There are enough adult and mini pitches, but pressures on junior pitches. There is limited use of school facilities in this area and the situation remains consistent when taking into account schools that are open for informal community use. The quality of pitches has minimal impact on the overall capacity of community pitches.</p> <p>More specifically, there is spare capacity at both sites for adult usage. There is also spare</p>	Scenario	Adult Football Shortfall / Surplus	Junior Football -Shortfall / Surplus	Mini Football -Shortfall / Surplus	Baseline Supply and Demand (draws upon district wide patterns of play).	1.3	-0.3	2.6	Supply and Demand taking into account area specific patterns of play	1	-0.5	2	Including schools that offer informal community access (<i>Explained further in Table 4.13</i>)	1.3	-0.3	2.6	Excluding pitches provided at cricket clubs (which may be removed if they are not used)	1.3	-0.3	2.6	Shortfalls and Surpluses excluding Poor Quality Pitches (<i>Explained further in Table 4.13</i>)	1.3	-0.3	2.6	None, provision currently sufficient to meet demand overall.
Scenario	Adult Football Shortfall / Surplus	Junior Football -Shortfall / Surplus	Mini Football -Shortfall / Surplus																							
Baseline Supply and Demand (draws upon district wide patterns of play).	1.3	-0.3	2.6																							
Supply and Demand taking into account area specific patterns of play	1	-0.5	2																							
Including schools that offer informal community access (<i>Explained further in Table 4.13</i>)	1.3	-0.3	2.6																							
Excluding pitches provided at cricket clubs (which may be removed if they are not used)	1.3	-0.3	2.6																							
Shortfalls and Surpluses excluding Poor Quality Pitches (<i>Explained further in Table 4.13</i>)	1.3	-0.3	2.6																							

Sport	Context	Issues to be Addressed
	<p>capacity at Highside Playing Fields for mini teams and it is thought that pitches are used flexibly, with the adult pitch being used for mini play on occasion.</p> <p>The quality of pitch provision is comparatively good and is consistent. The Kirkby Malzeard Playing Fields received Football Foundation Funding in 2011 and as a consequence were upgraded significantly. There are greater opportunities to upgrade the playing fields at Masham Sports Association.</p> <p>In addition to the pitches highlighted in this section to date, North Stainley Recreation Association is not currently used as a formal pitch but has previously functioned as such.</p> <p>Access to artificial pitches is limited and many residents are outside of the recommended catchment. There are no 3g pitches in the area and no sand based facilities.</p>	
Cricket	<p>Calculations undertaken in line with Towards a Level Playing Field indicate that provision is just sufficient to meet requirements in North West Harrogate District, with almost two pitches surplus to requirements at peak time. Two sites (Lofthouse and Middlemoor CC and Highside Playing Fields) are able to accommodate additional play on a Saturday. There is also capacity across the week and on a Sunday.</p> <p>It is clear however that pitches are still well used with a lot of play midweek as a result of the high numbers of junior teams. The overall picture in this area disguises club specific issues at Studley CC and North Stainley CC – the two clubs with a larger junior base. This reflects the situation in many parts of the district where clubs are reaching their capacity.</p> <p>It is clear that many of the cricket pitches in this part of the district are smaller than average and are of lower quality, with some issues relating to grass cover and drainage.</p>	<p>Quality of facilities</p> <p>Some clubs reaching capacity</p>
Rugby	No rugby played in this area.	None
Hockey	No hockey played in this area.	None
Tennis	Provision in North West Harrogate District is comparatively high, with seven courts, all of which are available to the public. This means that using the average participation as a base, each court is required to accommodate circa 34 players, a level below recommended amounts.	Quality of facilities

Sport	Context	Issues to be Addressed
	<p>This suggests that there is capacity in the current facility stock.</p> <p>Both of the larger settlements (Kirkby Malzeard and Masham) have tennis courts and associated clubs and both of these clubs have capacity for additional members. Like other rural parts of the district however there are some residents that fall outside of the target catchment of a tennis court.</p> <p>While the quantity of courts in relation to the population is high, the quality of facilities is perhaps more varying than other areas.</p>	

Table E.20 draws upon the general recommendations set out in this strategy and identifies the key priorities for North West Harrogate District

Table E.20 North West Harrogate District – Summary of Key Priorities

Sport	Key Priorities in North West Harrogate District	Rationale	Priority
Football	<p>F5: Support the introduction of new forms of the game.</p> <p>F7 / F8 /F9- Improve pitch quality</p> <p>F3 / F5: Support the creation of new facilities / relocate clubs that are dispersed across a variety of sites.</p>	<p>The impact of these proposals will need to be considered in the short term as new pitch configurations will be required in 2013.</p> <p>There are currently enough pitches but there are opportunities to improve the quality of facilities.</p> <p>Like in many other areas, demand for pitch provision is relatively closely matched with supply meaning that longer term, demand may exceed supply. There are pitches that have previously been used for formal play that could be reinstated for this purpose. This may also require qualitative improvements (F7 / F8 / F9)</p>	<p>Short Term</p> <p>Short Term</p> <p>Medium – Long Term</p>

Sport	Key Priorities in North West Harrogate District	Rationale	Priority
Cricket	<p>C3: Support clubs to improve pitch quality</p> <p>C5: Support clubs in the development of training nets and enhance sustainability</p> <p>C2: Ensure the amount of pitches does not impact upon participation</p>	<p>Quality issues at some sites reduce playing experience. Pitch and quality is essential if capacity of existing facilities is to be sustained. As there are currently enough facilities, quality improvements are of higher priorities.</p> <p>Two clubs are however approaching capacity and longer term, consideration may need to be given to the availability of existing facilities, either through the use of facilities at a smaller club as a satellite ground, or the creation of new facilities.</p>	<ul style="list-style-type: none"> • Short – Medium Term • Short - medium • Long Term
Rugby	No demand evident	No demand evident	N/A
Hockey	No demand evident	No demand evident	N/A
Tennis	T4 – Address qualitative issues at existing clubs	Capacity in current facility stock. Quality of facilities important if participation is to be maintained.	
Other sports	No demand evident	No demand evident	N/A

Table E.21 sets out the potential options to address the recommendations on a site specific basis.

Table E.21 – Potential Options to Address Recommendations – North West Harrogate District

Links	Recommendation for North West Harrogate District	Site Specific Opportunities
C3 / T4	Support the improvement of existing cricket facilities	Studley Royal CC, North Stainley CC
C5	Support clubs in the development of training nets and enhance sustainability	North Stainley CC, Galphay and Winsley CC (small club only)
F3	Provide additional facilities in the area to accommodate demand.	Reinstatement of facilities previously used for formal play – include Pateley Bridge Park and Max Pullan Recreation Ground. Longer term new provision for Nidd United (linked with recommendations in Central Harrogate). There is also high demand for facilities in Hampsthwaite
F5	Evaluate the impact of the new forms of the game introduced through the FA Youth Review	Discuss site specific implications with Kirkby Lions FC
F7 / F9	Improve pitch quality and support drainage improvements and upgrades	Masham Recreation Ground
C1	Provide additional cricket facilities where required through a variety of different means	Studley Royal CC
T5	Improve the quality of tennis courts	Galphay Village Institute

South Harrogate District

The total population of the South Harrogate district area is 6520. The largest settlements are Spofforth and Follifoot and this part of the district also contains the parishes of Blubberhouses, Fewston, Norwood, Haverah Park, Beckwithshaw, North Rigton, Weeton, Castley,

Stainburn, Leathley, Farnley, Newhall with Clifton, Lindley, Weston, Askwith, Denton, Middleton, Nesfield with Lanbar, Great Timble, Little Timble, Kirkby Overblow, Kearby with Netherby and Sicklinghall.

Table E.22 – Issues and Priorities in South Harrogate District

Sport	Context	Issues to be Addressed																								
Football	<p>Demand for pitches in South Harrogate is spread, with peak time for adult football being Saturday, youth (Sunday morning) and mini teams playing on Sunday afternoon. There are 17 teams in total. Beckwithshaw contains the only facilities in this part of the district, with two sites at the Village Hall and the Cricket Club. The results of the modelling are below.</p> <table border="1" style="width: 100%; border-collapse: collapse;"> <thead> <tr> <th style="background-color: #008000; color: white;">Scenario</th> <th style="background-color: #008000; color: white;">Adult Football Shortfall / Surplus</th> <th style="background-color: #008000; color: white;">Junior Football -Shortfall / Surplus</th> <th style="background-color: #008000; color: white;">Mini Football -Shortfall / Surplus</th> </tr> </thead> <tbody> <tr> <td>Baseline Supply and Demand (draws upon district wide patterns of play).</td> <td style="text-align: center;">0.5</td> <td style="text-align: center;">-0.8</td> <td style="text-align: center;">5.2</td> </tr> <tr> <td>Supply and Demand taking into account area specific patterns of play</td> <td style="text-align: center;">0</td> <td style="text-align: center;">-0.25</td> <td style="text-align: center;">4.75</td> </tr> <tr> <td>Including schools that offer informal community access (Explained further in Table 4.13)</td> <td style="text-align: center;">0.5</td> <td style="text-align: center;">-0.8</td> <td style="text-align: center;">5.2</td> </tr> <tr> <td>Excluding pitches provided at cricket clubs (which may be removed if they are not used)</td> <td style="text-align: center;">0.5</td> <td style="text-align: center;">-0.8</td> <td style="text-align: center;">-0.8</td> </tr> <tr> <td>Shortfalls and Surpluses excluding Poor Quality Pitches (Explained further in Table 4.13)</td> <td style="text-align: center;">0.5</td> <td style="text-align: center;">-0.8</td> <td style="text-align: center;">5.2</td> </tr> </tbody> </table> <p>As can clearly be seen;</p> <p>Even at the baseline level, supply is closely matched with demand in terms of adult and junior football. There are however clearly sufficient mini pitches with the largest surplus in the district (after Harrogate). The facilities at the cricket club are of particular importance to the local club – without these pitches there would be a shortfall in this area of mini pitches and the amount of teams currently run by the club would be unsustainable</p> <p>There are concerns relating to the quality of the facilities and provision becomes more closely matched with demand when quality is taken into account.</p>	Scenario	Adult Football Shortfall / Surplus	Junior Football -Shortfall / Surplus	Mini Football -Shortfall / Surplus	Baseline Supply and Demand (draws upon district wide patterns of play).	0.5	-0.8	5.2	Supply and Demand taking into account area specific patterns of play	0	-0.25	4.75	Including schools that offer informal community access (Explained further in Table 4.13)	0.5	-0.8	5.2	Excluding pitches provided at cricket clubs (which may be removed if they are not used)	0.5	-0.8	-0.8	Shortfalls and Surpluses excluding Poor Quality Pitches (Explained further in Table 4.13)	0.5	-0.8	5.2	<p>Shortfalls in pitch provision and longer term impact on club</p> <p>Quality issues at existing sites</p>
Scenario	Adult Football Shortfall / Surplus	Junior Football -Shortfall / Surplus	Mini Football -Shortfall / Surplus																							
Baseline Supply and Demand (draws upon district wide patterns of play).	0.5	-0.8	5.2																							
Supply and Demand taking into account area specific patterns of play	0	-0.25	4.75																							
Including schools that offer informal community access (Explained further in Table 4.13)	0.5	-0.8	5.2																							
Excluding pitches provided at cricket clubs (which may be removed if they are not used)	0.5	-0.8	-0.8																							
Shortfalls and Surpluses excluding Poor Quality Pitches (Explained further in Table 4.13)	0.5	-0.8	5.2																							

Sport	Context	Issues to be Addressed
	<p>More detailed analysis reveals that there is capacity for additional adult play on a Saturday at the Village Hall. This site is however at capacity on a Sunday morning with junior teams and it is likely that the pitch would be used by these teams. Reality therefore suggests that there are limited further opportunities for adults in this part of the district.</p> <p>Although the village hall is unable to accommodate additional matches at peak times, there is scope to increase the amount of play at Beckwithshaw Cricket club at peak times although the impact on the quality of the cricket outfield should be monitored. The impact of training on pitch provision should also be considered.</p> <p>The quality of the changing facility at the village hall is poor. While this does not impact upon capacity, it limits the attractiveness of the facility. Pitch quality also requires improvement. The only issues raised in this part of the district related to the quality of provision. No concerns over the quantity of pitches were evident.</p>	
Cricket	<p>Participation in cricket in South Harrogate is amongst the highest of all parts of the district, with 37 teams in total accommodated on six sites. Both Spofforth and Follifoot, the two largest settlements in this part of the district include a cricket club.</p> <p>Calculations indicate that there are sufficient pitches to meet demand on a peak day. Despite this, supply is in fact closely matched with demand and indeed there is only one pitch available on a Saturday for senior cricket (and this is already used as overspill by Pannal CC). There is good use of facilities midweek although Sicklinghall CC is only used on a Saturday and there is more capacity available midweek than in many other parts of the district. Follifoot Cricket Club are already struggling to accommodate matches and is evident that similar to other areas, the larger clubs are reaching capacity. Usage of the wickets at Follifoot CC is already above optimum levels.</p> <p>The quality of pitches in this part of the district is high and there are few areas for improvement identified.</p>	<p>Quality of facilities</p> <p>Some clubs reaching capacity</p>
Rugby	No rugby played in this area.	None
Hockey	No hockey played in this area.	None

Sport	Context	Issues to be Addressed
Tennis	<p>South Harrogate district has only three courts – at Kirkby Overblow (2) and Follifoot. There are no courts in Spofforth, one of the largest settlements in this area (although these residents are within a 10 minute drive of Wetherby). Not all residents are within a 5 mile catchment of tennis courts and that provision is relatively sparse in this part of the district.</p> <p>Based on the assumed participation rate of 4.1% across the district, this means that each court accommodates 89 players which is above recommended levels. Despite this, both clubs are thought to have capacity for additional members.</p>	None

Table E.23 draws upon the general recommendations set out in this strategy and identifies the key priorities for South Harrogate District

Table E.23 South Harrogate District – Summary of Key Priorities

Sport	Key Priorities in South Harrogate District	Rationale	Priority
Football	F5: Support the introduction of new forms of the game.	The impact of these proposals will need to be considered in the short term as new pitch configurations will be required in 2013.	Short Term
	F7 / F8 /F9– Improve pitch quality	There are concerns over the quality of existing pitch provision and a need to improve sites to ensure that they continue to meet local need.	Short Term
	F3 / F5: Support the creation of new facilities / relocate clubs that are dispersed across a variety of sites.	Like in many other areas, demand for pitch provision is relatively closely matched with supply. The club are spread across three sites (all of them small) and while the partnership between the football and cricket clubs is positive), the amount of use of the cricket outfield may lead to long term deterioration. New provision may be required to meet the club’s needs longer term.	Medium – Long Term
Cricket	C3 /C5: Support clubs in the development of training nets	Quality issues at some sites reduce playing experience. Pitch and quality is essential if capacity of existing facilities is to be sustained. As there are currently enough facilities, quality	<ul style="list-style-type: none"> Short – Medium Term

Sport	Key Priorities in South Harrogate District	Rationale	Priority
	and enhance sustainability C1 – Ensure that there are sufficient facilities for cricket	improvements are of higher priorities and this includes training facilities. Two clubs are however approaching capacity and longer term, consideration may need to be given to the availability of existing facilities, either through the use of facilities at a smaller club as a satellite ground, or the creation of new facilities.	<ul style="list-style-type: none"> Long Term
Rugby	No demand evident	No demand evident	N/A
Hockey	No demand evident	No demand evident	N/A
Tennis	T4 – Address qualitative issues at existing clubs T6: Support new tennis provision	Capacity in current club bases but courts are highly used. Quality of facilities important if participation is to be maintained. Given that there is no tennis in Spofforth, the largest settlement in this area, and potential usage is high, longer term new provision should be supported if demand arises.	
Other sports	No demand evident	No demand evident	N/A

Table E.24 sets out the potential options to address the recommendations on a site specific basis.

Table E.24 – Potential Options to Address Recommendations – South Harrogate District

Links	Recommendation for South Harrogate District	Site Specific Opportunities
C3 / C5	Support the improvement of existing cricket facilities	Spofforth CC, Follifoot CC
F3	Provide additional facilities in the area to accommodate demand.	Beckwithshaw JFC
F5	Evaluate the impact of the new forms of the game introduced through the FA Youth Review	Discuss site specific implications with Beckwithshaw JFC
F7 / F9	Improve pitch and changing quality	Beckwithshaw Village Hall (changing)

South East Harrogate District

South East Harrogate District contains the parishes of Arkendale, Marton Cum Grafton, Dunsforths, Great Ouseburn, Little Ouseburn, Kirby Hall, Thorpe Underwoods, Whixley, Allerton Mauleverer with Hopperton, Flaxby, Coneythorpe and Clareton, Ribston Great and Walshford, Little Ribston, North Deighton, Kirk Deighton, Hunsingore, Tockwith, Bilton in Ainsty, Wighill, Long Marston, Wilstrop, Moor Monkton, Nun Monkton, Green Hammerton, Kirk Hammerton, Cattal and Thornville. This area has a total population of 9490. The largest settlements in the area are Marton Cum Grafton, Great Ouseburn, Green Hammerton and Tockwith.

Table E.25 – Issues and Priorities in South East Harrogate District

Sport	Context	Issues to be Addressed
Football	<p>Demand for pitches in South East Harrogate District is focused on a Saturday for adults, Sunday morning for mini football and Sunday afternoon for junior football. This means that demand is spread across the weekend. In total there are 35 teams.</p> <p>Provision in South East Harrogate is relatively high and is primarily focused upon club and Parish Council / Playing Field association facilities. The results of modelling are summarised below.</p>	<p>Quality issues</p> <p>Pressures at Tockwith FC</p>

Sport	Context	Issues to be Addressed																								
	<table border="1" data-bbox="327 329 1430 769"> <thead> <tr> <th data-bbox="336 336 846 443">Scenario</th> <th data-bbox="854 336 1052 443">Adult Football Shortfall / Surplus</th> <th data-bbox="1060 336 1257 443">Junior Football -Shortfall / Surplus</th> <th data-bbox="1266 336 1421 443">Mini Football -Shortfall / Surplus</th> </tr> </thead> <tbody> <tr> <td data-bbox="336 449 846 509">Baseline Supply and Demand (draws upon district wide patterns of play).</td> <td data-bbox="854 449 1052 509">4.2</td> <td data-bbox="1060 449 1257 509">0.9</td> <td data-bbox="1266 449 1421 509">-0.3</td> </tr> <tr> <td data-bbox="336 516 846 576">Supply and Demand taking into account area specific patterns of play</td> <td data-bbox="854 516 1052 576">3</td> <td data-bbox="1060 516 1257 576">1</td> <td data-bbox="1266 516 1421 576">-0.5</td> </tr> <tr> <td data-bbox="336 583 846 643">Including schools that offer informal community access (Explained further in Table 4.13)</td> <td data-bbox="854 583 1052 643">4.2</td> <td data-bbox="1060 583 1257 643">0.9</td> <td data-bbox="1266 583 1421 643">1.7</td> </tr> <tr> <td data-bbox="336 633 846 693">Excluding pitches provided at cricket clubs (which may be removed if they are not used)</td> <td data-bbox="854 633 1052 693">4.2</td> <td data-bbox="1060 633 1257 693">0.9</td> <td data-bbox="1266 633 1421 693">-0.3</td> </tr> <tr> <td data-bbox="336 699 846 760">Shortfalls and Surpluses excluding Poor Quality Pitches (Explained further in Table 4.13)</td> <td data-bbox="854 699 1052 760">4.2</td> <td data-bbox="1060 699 1257 760">0.9</td> <td data-bbox="1266 699 1421 760">-0.3</td> </tr> </tbody> </table> <p data-bbox="327 865 1493 987">It is clear that provision is sufficient to meet demand at a baseline level, with sufficient adult and junior pitches and only a small shortfall of mini football pitches. This shortfall is offset by the surplus adult and junior pitches. Adjustments to the temporal demand have little impact on the overall adequacy of provision.</p> <p data-bbox="327 1019 1493 1109">School sites used informally provide a little additional capacity. This is due to the inclusion of Tockwith Primary School, which provides two mini football pitches. The role of cricket pitches is however clear, as there is a small shortfall of provision when taken out of the equation.</p> <p data-bbox="327 1141 1493 1295">The quality of pitches has some impact on the overall adequacy of provision, with the surpluses of adult football pitches reducing. This suggests that not all pitches in the area are fit for the purpose that they are intended. Reflecting this, usage of adult pitches is uneven. There is high demand at Kirk Hammerton and Kirk Deighton pitches as well as Great Ouseburn however there is capacity at Green Hammerton and Whixley Playing Field is hardly used.</p> <p data-bbox="327 1328 1493 1349">Analysis of the adequacy of pitches for juniors presents a misleading picture, as Kirk Deighton</p>	Scenario	Adult Football Shortfall / Surplus	Junior Football -Shortfall / Surplus	Mini Football -Shortfall / Surplus	Baseline Supply and Demand (draws upon district wide patterns of play).	4.2	0.9	-0.3	Supply and Demand taking into account area specific patterns of play	3	1	-0.5	Including schools that offer informal community access (Explained further in Table 4.13)	4.2	0.9	1.7	Excluding pitches provided at cricket clubs (which may be removed if they are not used)	4.2	0.9	-0.3	Shortfalls and Surpluses excluding Poor Quality Pitches (Explained further in Table 4.13)	4.2	0.9	-0.3	
Scenario	Adult Football Shortfall / Surplus	Junior Football -Shortfall / Surplus	Mini Football -Shortfall / Surplus																							
Baseline Supply and Demand (draws upon district wide patterns of play).	4.2	0.9	-0.3																							
Supply and Demand taking into account area specific patterns of play	3	1	-0.5																							
Including schools that offer informal community access (Explained further in Table 4.13)	4.2	0.9	1.7																							
Excluding pitches provided at cricket clubs (which may be removed if they are not used)	4.2	0.9	-0.3																							
Shortfalls and Surpluses excluding Poor Quality Pitches (Explained further in Table 4.13)	4.2	0.9	-0.3																							

Sport	Context	Issues to be Addressed
	<p>JFC actually travel out of the district to Wetherby to use their new facility (Grange Park). The old facility at Loshpott Lane still exists and is occasionally used, but has capacity to accommodate additional play. Tockwith FC is a growing club and facilities are nearing capacity. The club uses Tockwith Primary School to accommodate this overflow and raises concerns about the impact of the recent FA review on the adequacy of pitches. The club also uses its facilities for training, adding further wear and tear.</p> <p>The quality of pitches is varying, but none fall below the threshold that suggests they may offer reduced capacity. There are however some quality issues that need to be addressed.</p> <p>In addition to the pitches highlighted in this section to date, Marton Cum Grafton Recreation Ground is not currently used as a formal pitch but has previously functioned as such.</p>	
Cricket	<p>Participation in cricket in South East Harrogate is the highest in the district in terms of number of teams (44) and also the number of clubs. Reflecting this, like other parts of the district, there is little spare capacity in the pitch stock, with only Wighill Cricket Club able to accommodate additional play on a Saturday.</p> <p>There is greater ability to accommodate additional play midweek than in other areas although the majority of facilities are still well used. With the exception of Kirk Deighton Cricket Club, most wickets are also used at or below optimum capacity.</p> <p>Quality is an issue for several clubs in this part of the district, with Great Ouseburn CC, Kirk Deighton CC, Kirk Hammerton CC and Long Marston CC all identifying qualitative improvements that are required. Most of these issues were also reflected in scores achieved in site visits, with sites achieving lower scores than most other areas and several pavilions rated as poor.</p>	<p>Facilities reaching capacity at peak time</p> <p>Qualitative issues</p>
Rugby	No rugby played in this area.	None
Hockey	No hockey played in this area.	None
Tennis	Tockwith Tennis Club is the only club in South East Harrogate and offers two courts. There is no pay and play access to these courts. This means that none of the larger settlements of Marton Cum Grafton, Great Ouseburn or Green Hammerton offer a facility and residents must travel	Improvements required for Tockwith TC

Sport	Context	Issues to be Addressed
	and are outside of the five mile catchment for a tennis court. Reflecting the fact that there are only two courts within this part of the district, when using the LTA standards as a measure of the adequacy of supply, it can be concluded that there is a shortfall in provision, with courts expected to serve almost 200 players each. Despite this, there is capacity within the existing club to accommodate new members and the club are seeking to do so through active promotion. The club currently do not have a clubhouse or floodlights, which reduces the amount of play that can take place.	Potential latent demand

Table E.26 draws upon the general recommendations set out in this strategy and identifies the key priorities for South East Harrogate District

Table E.26 South Harrogate District – Summary of Key Priorities

Sport	Key Priorities in South Harrogate District	Rationale	Priority
Football	F5: Support the introduction of new forms of the game.	The impact of these proposals will need to be considered in the short term as new pitch configurations will be required in 2013.	Short Term
	F7 / F8 /F9– Improve pitch quality	There are concerns over the quality of existing pitch provision and a need to improve sites to ensure that they continue to meet local need.	Short Term
	F2: - Secure access to school sites	Access to school sites is currently important in sustaining the activity of the club.	
	F3 / F5: Support the creation of new facilities / relocate clubs that are dispersed across a variety of sites.	Longer term, expanding clubs may need additional facilities to accommodate junior teams.	Medium – Long Term
Cricket	C3 /C5: Support clubs in the	Quality issues at some sites reduce playing experience. Pitch	• Short – Medium Term

Sport	Key Priorities in South Harrogate District	Rationale	Priority
	development of training nets and enhance sustainability C1 – Ensure that there are sufficient facilities for cricket	quality is essential if capacity of existing facilities is to be sustained. There is little capacity in the existing pitch stock and longer term, additional provision may be required to accommodate demand.	<ul style="list-style-type: none"> Long Term
Rugby	No demand evident	No demand evident	N/A
Hockey	No demand evident	No demand evident	N/A
Tennis	T4 – Address qualitative issues at existing clubs T6: Support new tennis provision	Limited current provision in this area and the only facility in this part of the district does not have floodlights or a pavilion. Potential to provide new tennis facilities due to potential high levels of use if demand was expressed.	
Other sports	No demand evident	No demand evident	N/A

Table E.27 sets out the potential options to address the recommendations on a site specific basis.

Table E.27 – Potential Options to Address Recommendations – South East Harrogate District

Links	Recommendation for South East Harrogate District	Site Specific Opportunities
C3 / C5	Support the improvement of existing cricket facilities	Great Ouseburn CC, Kirk Deighton CC (equipment and training nets) Kirk Hammerton CC (pavilion) and Long Marston CC (pitch improvements), Little Ribston (training nets)
F3	Provide additional facilities in the area to accommodate demand.	Extension of Tockwith FC facilities – scope to provide additional pitches within current footprint
F5	Evaluate the impact of the new forms of the game introduced through the FA Youth Review	Discuss site specific implications with Tockwith JFC

F2	Secure access to school facilities	Tockwith Primary School
T5	Improve quality of tennis facilities	Tockwith Tennis Club

Planning Issues

The identified deficiencies of certain pitch types (and pressures on the stock of pitch sports in other areas) emphasise the importance of protecting existing areas of playing pitch land and open space in public, private and educational ownership, as playing pitches can be under threat from other, non sport development.

As well as setting out the requirements for current and future pitch provision, the strategy also outlines recommended local standards, which include;

- quantitative elements (how much new provision may be needed);
- a qualitative component (against which to measure the need for the enhancement of existing facilities); and
- accessibility (including distance thresholds and consideration of the cost of using a facility).

The main report outlines the background to the standards, however the following standards have been set.

Quantity Standards - 1.16 ha per 1000 population is required to meet local demand in terms of pitches for football, cricket, rugby and tennis. This standard considers only the playing field area required and does not include run offs, buffer zones etc. All pitches should meet with quality, which include appropriate safety margins.

Quality Standards - there are several factors integral to the successful delivery of a network of high sports facilities, specifically, the needs and expectations and users, as well as the design, management and maintenance of existing facilities. The strategy sets out range of expectations for new and improved facilities, which include;

- a high standard of maintenance, enabling the pitch to be played at least twice per week without detrimental impact and ensuring that sites are clean and attractive facilities;
- adequate changing facilities;
- managed community access;
- easily accessible by public transport and by car with sufficient parking;
- size of pitches and run offs must meet NGB specification;
- located in a no flood zone;
- security of tenure (at least 10 years) if a club is to be based at the site; and
- for rugby clubs in particular, sites should include floodlit training facilities.

Each National Governing Body (NGB) provides detailed guidance on the design of facilities and changing accommodation and all new sites and any modifications to existing facilities should be undertaken in line with this guidance.

Accessibility Standards: When planning new facilities, particularly as part of new developments that while facilities are required locally (although ideally of sufficient size to accommodate all teams within a club all at one venue) there is a need to retain a club base for cricket, rugby and hockey (and avoid the provision of dispersed pitches) and for football also as far as possible. Other facilities for football are also required to support the requirements of one / two team clubs that play more informally.

New provision should therefore be located off a development site, or in conjunction with the development of a new club, or satellite club to an existing facility, or for football, within a development site where the facility is of sufficient size to sustain at least two pitches with associated changing accommodation. The recommendations draw out the key priorities for the future delivery of playing fields in Harrogate District.

Planning recommendations

With regards planning issues, the strategy recommends that;

P1: It is recommended that these local standards are incorporated in the Harrogate DC Planning Framework and that they are considered material at any planning stage.

P2: Planning policy should protect existing playing fields from development unless one of the five criteria set out in Sport England guidance on planning for playing fields is met. There may be opportunities for development of playing fields but only based on where there is net benefit to sport from development. This may include the replacement of single pitch sites with a larger high quality multi pitch site. The potential for the site to fulfil a role as a wider open space should be considered prior to disposal. Overall the Council should adopt a flexible approach to development but ensuring in all potential developments there is a net benefit to sport and this is identified and safeguarded. There should be no net loss of playing fields.

P3: To take into account the impact of new population growth on the demand for playing fields and the location of this demand, planning policy should require contributions towards pitch and outdoor sports provision from all new developments.

P4: Planning policy should promote the creation of community use agreements at key school sites. It is acknowledged however that there are many challenges associated with opening schools for community use. Guidance produced by Sport England (available at http://www.sportengland.org/support_advice/accessing_schools.aspx and including Designing for Sport on School Sites) will be of assistance in realising potential opportunities.

P5: Where possible, the creation of new or improved multi pitch sites should be prioritised over the delivery of new single pitches.

P6: Where appropriate, new provision should be created through allocations for sport in the local plan and on site facilities forming part of larger urban extensions.



2. Monitoring and Review

Monitoring and review of this strategy will be undertaken as follows:

- Ongoing monitoring of changes to the pitch stock in the district should be carried out (both qualitative and quantitative changes), using the tools provided as part of this assessment.
- Annual review of participation, with support from National Governing bodies, to identify any key changes to participation trends in the district, and the likely implications of these changes for pitch requirements and the strategy action plan.
- Annual review of pitch usage and pitch bookings to reevaluate surpluses and deficiencies and strategically plan pitch provision every 12 months.
- Commitment to review progress by HBC and key partners on the strategy delivery, identification of additional priorities and drawing on the data collated as part of the above two actions, to ensure the strategy remains relevant and current.
- The amount of funding for pitches or provision of additional pitches delivered in association with new development will be monitored through the Planning Divisions AMR (Annual Monitoring Report).
- Periodical full refresh of the strategy (every five years).

*Neil Allen Associates Registered Office:
20 Brook Road, Lymm, Cheshire, WA139AH*

*A limited company, registered in
England and Wales no. 6165280*